

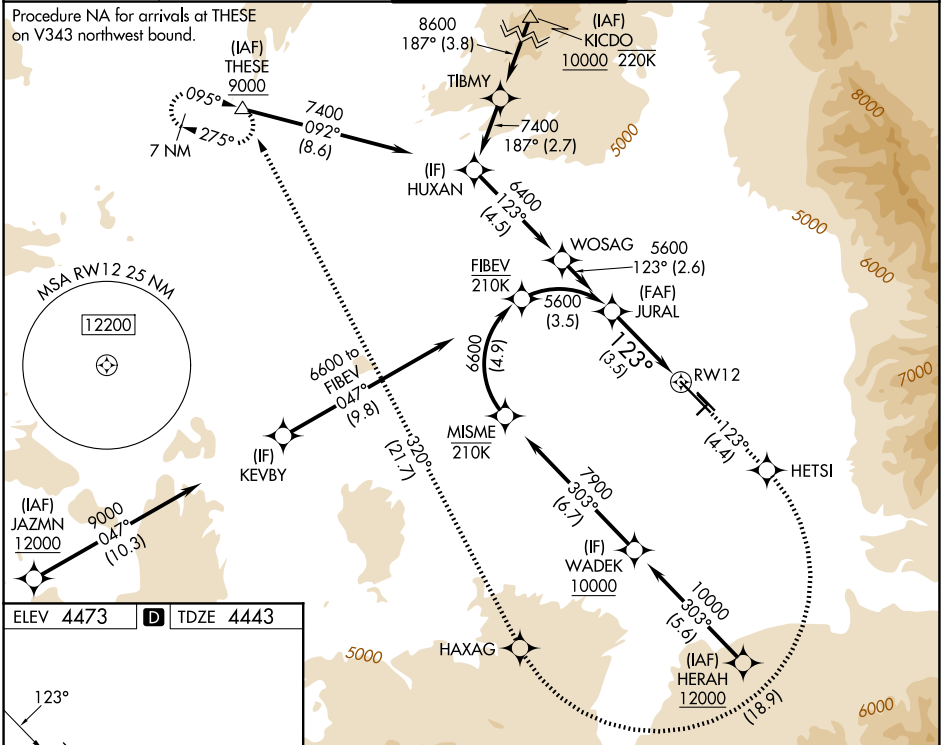
APP CRS	Rwy Ldg	8994
123°	TDZE	4443
	Apt Elev	4473

RNAV (RNP) Z RWY 12

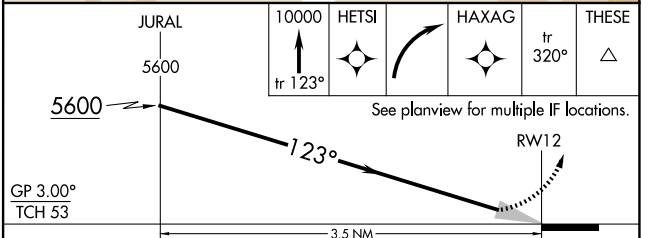
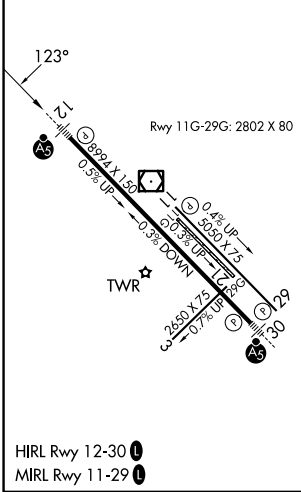
BOZEMAN YELLOWSTONE INTL (BZN)

RNP AR APCH - GPS, RF. Authorization required.		MALSR	MISSED APPROACH: Climb to 10000 on track 123° to HETSI, and right turn to HAXAG, and on track 320° to THESE and hold.
<p>▼ For uncompensated Baro-VNAV systems, procedure NA below -29°C or above 54°C. When local altimeter setting not received, procedure NA.</p> <p>☼ -21°C For inop ALS, increase RNP 0.10 all Cats visibility to 7/8 SM and increase RNP 0.30 all Cats visibility to 1 SM.</p>			

ATIS 135.425	BIG SKY APP CON * 118.975 226.675	BOZEMAN TOWER * 118.2 (CTAF) 0	GND CON 121.8	UNICOM 122.95
------------------------	---	--	-------------------------	-------------------------



ELEV 4473	D	TDZE 4443
-----------	----------	-----------



CATEGORY	A	B	C	D
RNP 0.10 DA		4725/24	282 (300-1/2)	
RNP 0.30 DA		4807/35	364 (400-5/8)	

AUTHORIZATION REQUIRED

NW-1, 14 MAY 2026 to 11 JUN 2026

NW-1, 14 MAY 2026 to 11 JUN 2026