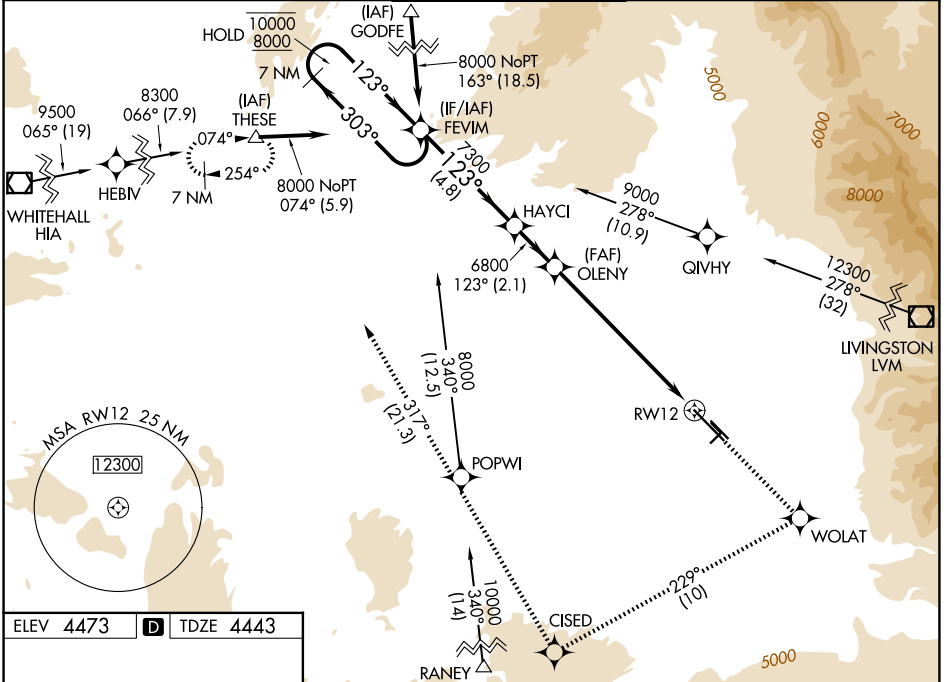


WAAS CH 72816 W12A	APP CRS 123°	Rwy Ldg TDZE Apt Elev	8994 4443 4473
--	------------------------	-----------------------------	---

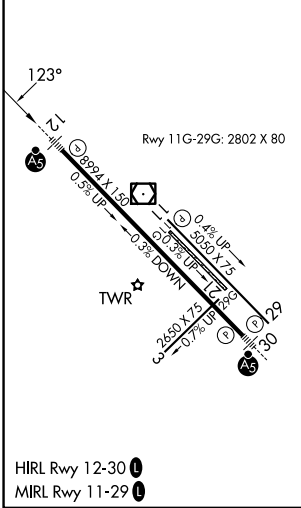
RNAV (GPS) Y RWY 12

BOZEMAN YELLOWSTONE INTL (BZN)

RNP APCH.		MALSR	MISSED APPROACH: Climb to 8300 direct WOLAT and right turn on track 229° to CISED and on track 317° to THESE and hold.	
<p>⚠ Circling NA to Rwys 3-21 and 11-29. For uncompensated Baro-VNAV systems, procedure NA below -23°C or above 49°C. For inop ALS, increase to -21°C LNAV/VNAV visibility to 1½ SM and LNAV visibility Cats C and D to 1½ SM.</p>				
ATIS 135.425	BIG SKY APP CON* 118.975 226.675	BOZEMAN TOWER* 118.2 (CTAF)	GND CON 121.8	UNICOM 122.95



ELEV 4473	D	TDZE 4443
-----------	----------	-----------



	FEVIM	8300	WOLAT	CISED	THESE
	7 NM Holding Pattern			tr 229°	tr 317°
	10000	8000	6800	6800	
	GP 3.00°	TCH 53			
		4.8 NM	2.1 NM	5.7 NM	1.5 NM
CATEGORY	A	B	C	D	
LPV DA		4693-½	250 (300-½)		
LNAV/VNAV DA		5094-1¾	651 (700-1¾)		
LNAV MDA	4960-½	517 (500-½)	4960-1 517 (500-1)	4960-1¼ 517 (500-1¼)	
CIRCLING	4960-1	487 (500-1)	5160-2 687 (700-2)	5360-3 887 (900-3)	

NW-1, 14 MAY 2026 to 11 JUN 2026

NW-1, 14 MAY 2026 to 11 JUN 2026