

(BUF8.BUF) 23334

BUFFALO EIGHT DEPARTURE

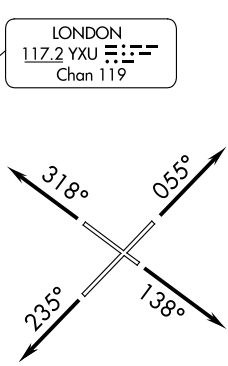
AL-65 (FAA)

BUFFALO NIAGARA INTL (BUF)
BUFFALO, NEW YORK

D-ATIS 135.35
CLNC DEL
124.7 257.8
CPDLC
GND CON
133.2 257.8
BUFFALO TOWER
120.5 257.8
BUFFALO DEP CON
126.15 263.125

TAKEOFF MINIMUMS:
Rwys 5, 14, 23, 32: Standard.

TOP ALTITUDE:
10000



LONDON
117.2 YXU
Chan 119

ROCHESTER
110.0 ROC
Chan 37

SYRACUSE
117.0 SYR
Chan 117

GENESEEO
108.2 GEE
Chan 19

JAMESTOWN
114.7 JHW
Chan 94

STONYFORK
108.6 SFK
Chan 23

DRYER
113.6 DJB
Chan 83

SLATE RUN
113.9 SLT
Chan 86

NOTE: RADAR required.

NOTE: Chart not to scale.

DEPARTURE ROUTE DESCRIPTION

- TAKEOFF RUNWAY 5:** Climb heading 055° until leaving 3000. Thence. . .
- TAKEOFF RUNWAY 14:** Climb heading 138° until leaving 3000. Thence. . .
- TAKEOFF RUNWAY 23:** Climb heading 235° until leaving 3000. Thence. . .
- TAKEOFF RUNWAY 32:** Climb heading 318° until leaving 3000. Thence. . .

NON-TURBOJET AIRCRAFT ONLY: Climb on assigned heading, thence. . .
. . . vectors to assigned route/fix. Maintain 10000 or assigned lower altitude.
Expect clearance to filed altitude/flight level ten (10) minutes after departure.

NE-2, 14 MAY 2026 to 11 JUN 2026

NE-2, 14 MAY 2026 to 11 JUN 2026

BUFFALO EIGHT DEPARTURE
(BUF8.BUF) 02DEC21

BUFFALO, NEW YORK
BUFFALO NIAGARA INTL (BUF)