

LOC I-BUF <b>111.3</b>	APP CRS <b>235°</b>	Rwy Ldg TDZE Apt Elev	<b>7569</b> <b>726</b> <b>727</b>
---------------------------	------------------------	-----------------------------	---

# ILS or LOC RWY 23

BUFFALO NIAGARA INTL (BUF)

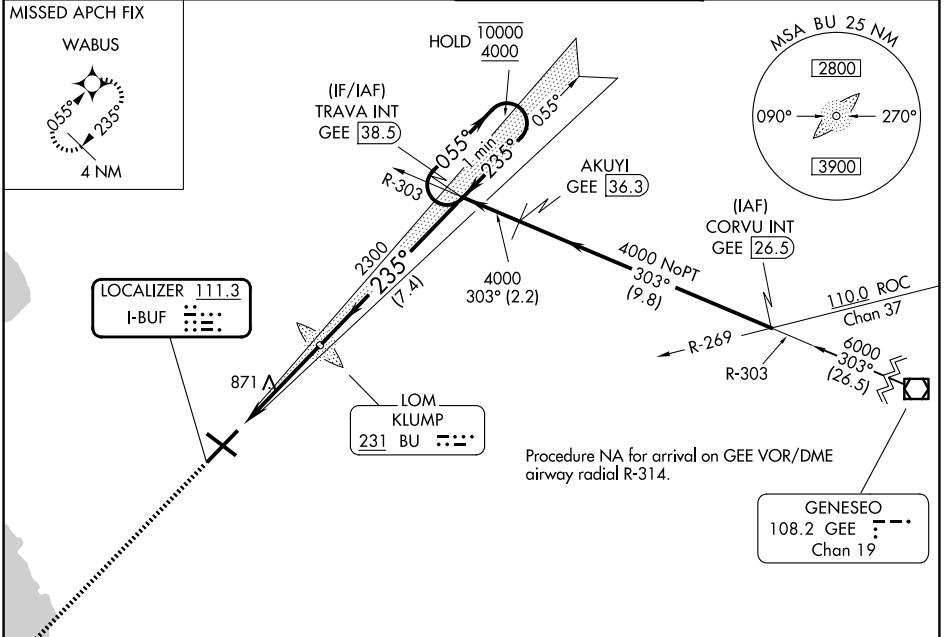
DME required. RNP APCH - GPS. ADF required for LOC only.

For inop ALS, increase S-LOC 23 Cats C and D visibility to RVR 6000.

ALSIF-2

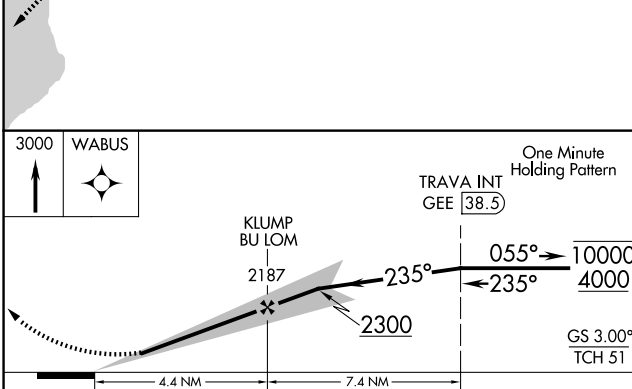
MISSED APPROACH: Climb to 3000 direct WABUS and hold.

D-ATIS <b>135.35</b>	BUFFALO APP CON <b>126.15 263.125</b>	BUFFALO TOWER <b>120.5 257.8</b>	GND CON <b>133.2 257.8</b>
-------------------------	--	-------------------------------------	-------------------------------

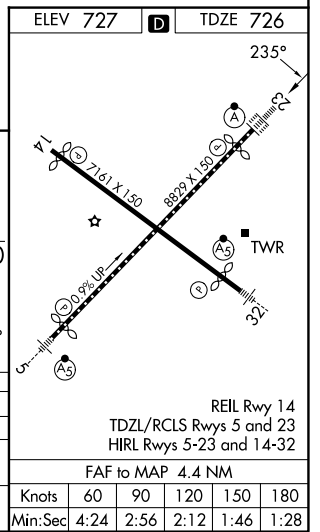


NE-2, 14 MAY 2026 to 11 JUN 2026

NE-2, 14 MAY 2026 to 11 JUN 2026



3000 WABUS	One Minute Holding Pattern			
TRAVA INT GEE (38.5)	235°			
KLUMP BU LOM	2300			
	4.4 NM		7.4 NM	
CATEGORY	A	B	C	D
S-ILS 23	926/18 200 (200-½)			
S-LOC 23	1140/24	414 (500-½)	1140/40	414 (500-¾)
CIRCLING	1200-1	473 (500-1)	1220-1½	1340-2
			493 (500-1½)	613 (700-2)



ELEV 727	TDZE 726
REIL Rwy 14	
TDZL/RCLS Rwy 5 and 23	
HIRL Rwy 5-23 and 14-32	
FAF to MAP 4.4 NM	
Knots	60 90 120 150 180
Min:Sec	4:24 2:56 2:12 1:46 1:28