

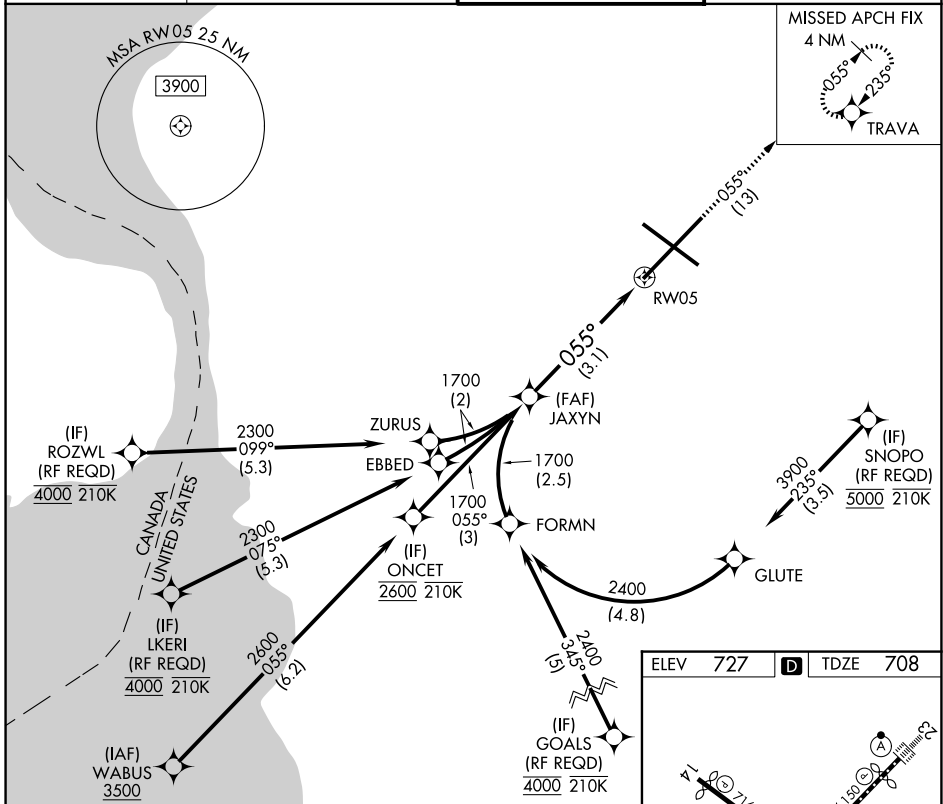
APP CRS	Rwy Ldg	<b>7569</b>
<b>055°</b>	TDZE	<b>708</b>
	Apt Elev	<b>727</b>

# RNAV (RNP) Z RWY 5

BUFFALO NIAGARA INTL (BUF)

**⚠** For uncompensated Baro-VNAV systems, procedure NA below -18°C (0°F) or above 54°C (130°F). GPS required. For inoperative MALS, increase RNP 0.10 all Cats visibility to 1¼. For inoperative MALS, increase RNP 0.30 all Cats visibility to 1%. **MALS** MISSED APPROACH: Climb to 3000 on the RNAV missed approach route to TRAVA and hold.

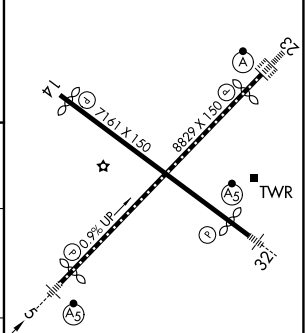
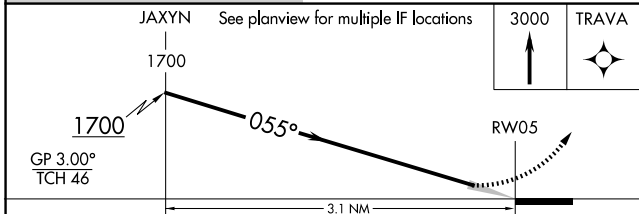
D-ATIS <b>135.35</b>	BUFFALO APP CON <b>126.15 263.125</b>	BUFFALO TOWER <b>120.5 257.8</b>	GND CON <b>133.2 257.8</b>
-------------------------	--	-------------------------------------	-------------------------------



NE-2, 14 MAY 2026 to 11 JUN 2026

NE-2, 14 MAY 2026 to 11 JUN 2026

ELEV 727	<b>D</b>	TDZE 708
----------	----------	----------



CATEGORY	A	B	C	D
RNP 0.10 DA		1065/45	357 (400-¾)	
RNP 0.30 DA		1159/60	451 (500-1¼)	

**AUTHORIZATION REQUIRED**

REIL Rwy 14  
TDZL/RCLS Rwws 5 and 23  
HIRL Rwws 5-23 and 14-32