

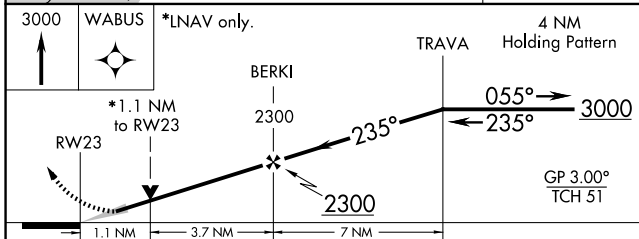
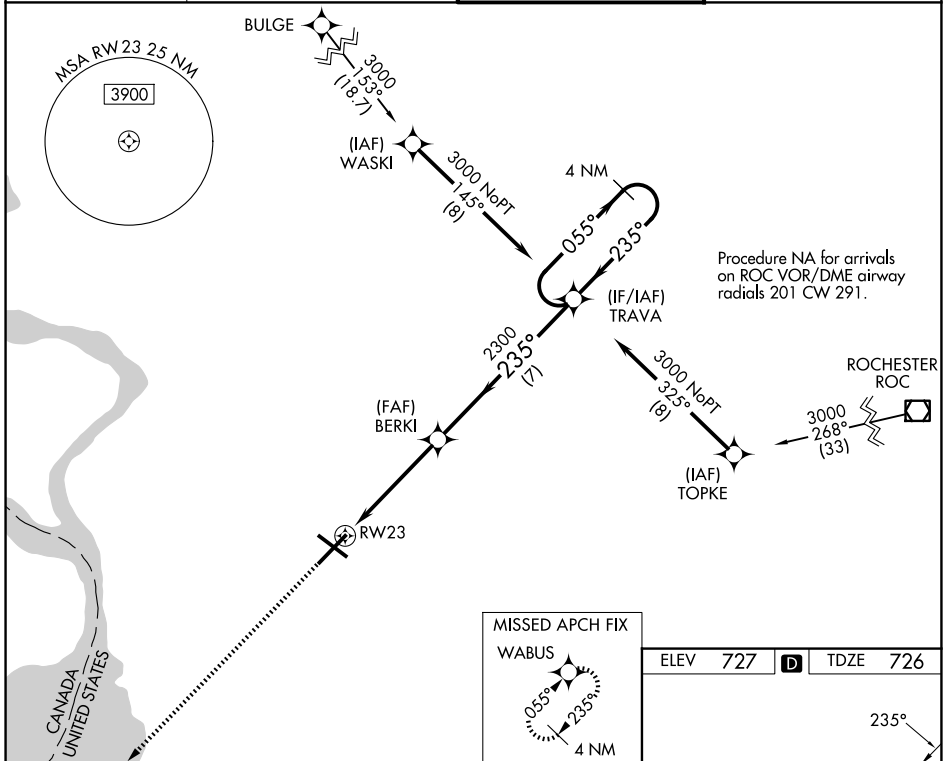
WAAS CH 77511 W23A	APP CRS 235°	Rwy Ldg TDZE Apt Elev	7569 726 727
--	------------------------	-----------------------------	---

RNAV (GPS) Y RWY 23

BUFFALO NIAGARA INTL (BUF)

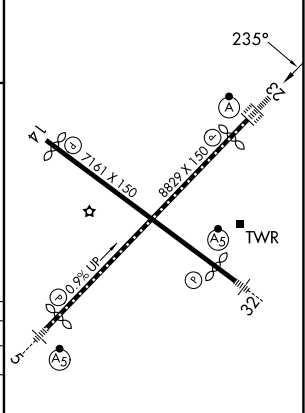
RNP APCH - GPS	ALSF-2	MISSED APPROACH: Climb to 3000 direct WABUS and hold.
For uncompensated Baro-VNAV systems, LNAV/VNAV NA below -17°C or above 54°C.		

D-ATIS 135.35	BUFFALO APP CON 126.15 263.125	BUFFALO TOWER 120.5 257.8	GND CON 133.2 257.8
-------------------------	--	-------------------------------------	-------------------------------



ELEV 727	D	TDZE 726
----------	----------	----------

CATEGORY	A	B	C	D
LPV DA		926/18	200 (200-½)	
LNAV/VNAV DA		1050/30	324 (400-¾)	
LNAV MDA	1140/24	414 (500-½)	1140/40	414 (500-¾)
CIRCLING	1200-1	473 (500-1)	1220-1½	1340-2
			493 (500-1½)	613 (700-2)



REIL Rwy 14
TDZL/RCLS Rwy 5 and 23
HIRL Rwy 5-23 and 14-32

NE-2, 14 MAY 2026 to 11 JUN 2026

NE-2, 14 MAY 2026 to 11 JUN 2026