

LOC I-BUR <b>109.5</b>	APP CRS <b>079°</b>	Rwy Ldg TDZE <b>5801 727</b> Apt Elev <b>778</b>
---------------------------	------------------------	---

# ILS Y or LOC Y RWY 8

BOB HOPE (BUR)

From MIKEI: RNAV 1-GPS required.

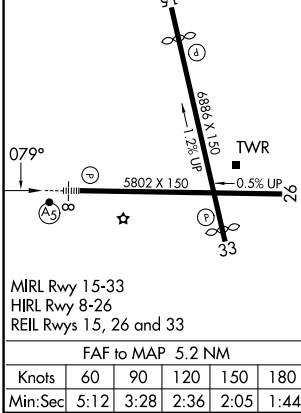
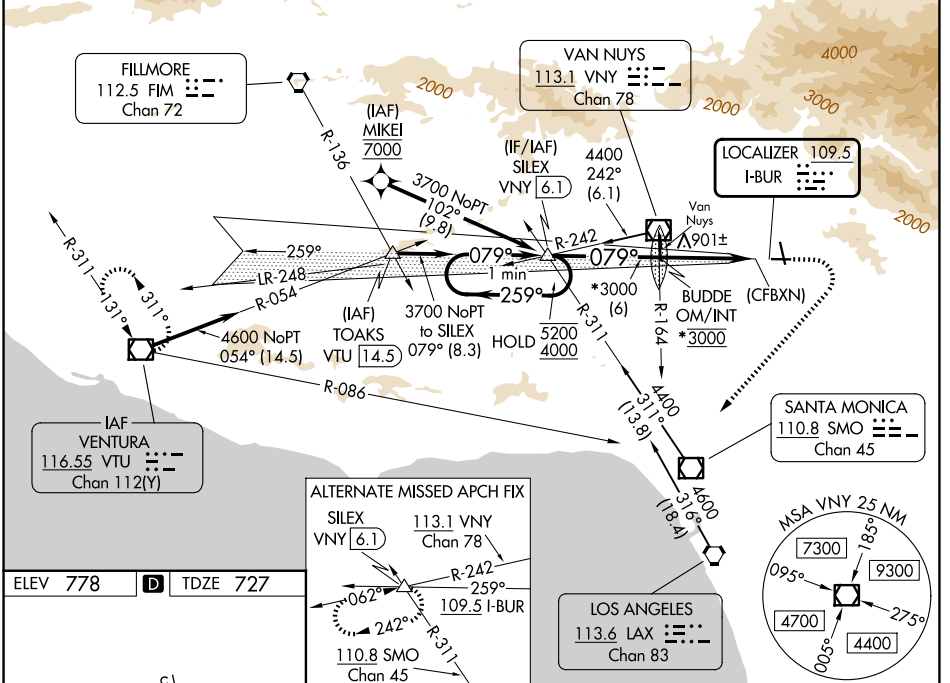
**⚠** Localizer unusable within 0.9 NM to thld. Straight-in Rwy 8 at night, Circling to Rwy 33 at night, operational VGSI required, remain on or above VGSI glidepath until threshold.

**⚠** Circling Rwy 26 NA at night and Circling Rwy 33 NA at night for Cat D. Circling NA for Cats A/B/C northeast of Rwy 15 and 26. Circling NA for Cat D east of Rwy 15-33. Inop table does not apply to S-ILS Rwy 8. For inop ALS, increase S-LOC 8 Cats A/B visibility to 1¼ SM. Rwy 8 helicopter visibility reduction below RVR 5000 NA.

MALSRR

MISSED APPROACH:  
Climb to 1800 then climbing right turn to 4600 on heading 210° and VTU VOR/DME R-086 to VTU VOR/DME and hold.

D-ATIS <b>134.5</b>	SOCAL APP CON <b>120.4 360.6 (NORTH)</b> <b>134.2 338.2 (WEST)</b>	BURBANK TOWER <b>118.7 254.3</b>	GND CON <b>123.9 348.6</b>	CLNC DEL <b>118.0 348.6</b>	CPDLC
------------------------	--	-------------------------------------	-------------------------------	--------------------------------	-------



ELEV 778	<b>D</b>	TDZE 727
----------	----------	----------

VTU	VTU	VTU
1800	4600	VTU R-086
↑	hdg 210°	☐
*LOC only		

CATEGORY	A	B	C	D
S-ILS 8		1555-2)½	828 (800-2)½	
S-LOC 8	1620/50	893 (900-1)	1620-2	893 (900-2)
CIRCLING	1620-1¼ 842 (900-1¼)	1640-1¼ 862 (900-1¼)	2240-3 1462 (1500-3)	2320-3 1542 (1600-3)

SW-3, 14 MAY 2026 to 11 JUN 2026

SW-3, 14 MAY 2026 to 11 JUN 2026