


LOC I-BUR <b>109.5</b>	APP CRS <b>079°</b>	Rwy Ldg TDZE <b>5801 727</b>	Apt Elev <b>778</b>
---------------------------	------------------------	---------------------------------	------------------------

# ILS Z or LOC Z RWY 8

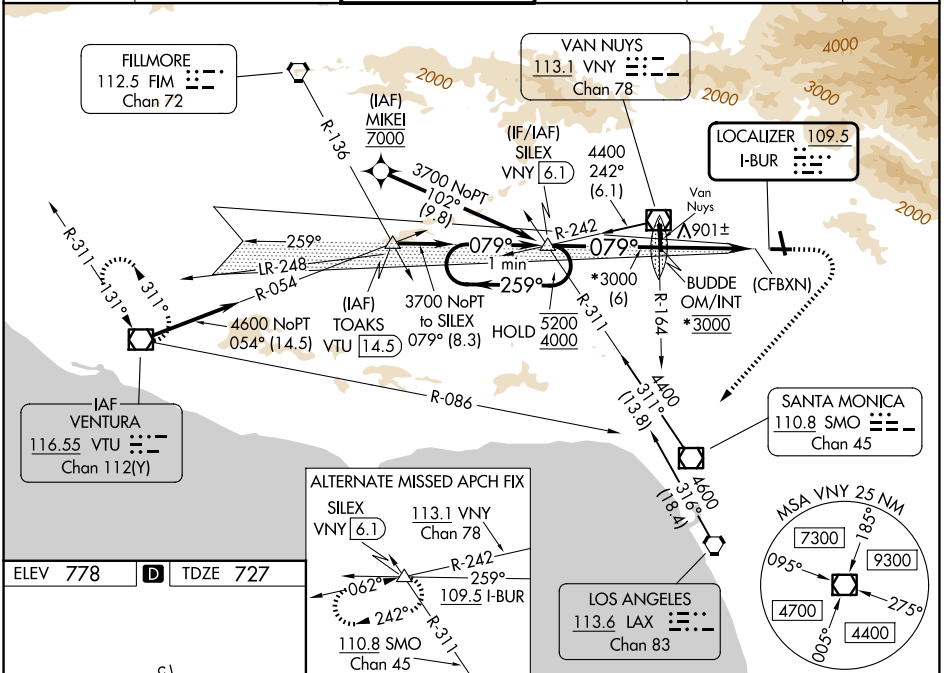
BOB HOPE (BUR)

From MIKEI: RNAV 1-GPS required.

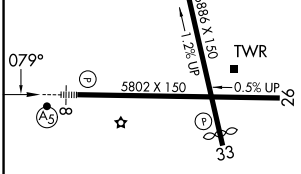
⚠ Localizer unusable within 0.9 NM to thld. Straight-in Rwy 8 at night, Circling to Rwy 33 at night, operational VGSJ required, remain on or above VGSJ glidepath until threshold. Circling Rwy 26 NA at night and Circling Rwy 33 NA at night for Cat D. Circling NA for Cats A/B/C northeast of Rwy 15 and 26. Circling NA for Cat D east of Rwy 15-33. Inop table does not apply to S-ILS 8. For inop ALS, increase S-LOC 8 Cats A/B visibility to RVR 6000 and S-LOC 8 Cats C/D visibility to 1/4 SM. Rwy 8 helicopter visibility reduction below RVR 5000 NA.

MALSRL  
  
 MISSED APPROACH: Climb to 1300 then climbing right turn to 4600 on heading 210° and VTU VOR/DME R-086 to VTU VOR/DME and hold. #MISSED approach requires a minimum climb of 340 feet per NM to 2520 (if unable to meet climb gradient, see ILS Y or LOC Y RWY 8).

D-ATIS <b>134.5</b>	SOCAL APP CON <b>120.4 360.6 (NORTH)</b> <b>134.2 338.2 (WEST)</b>	BURBANK TOWER <b>118.7 254.3</b>	GND CON <b>123.9 348.6</b>	CLNC DEL <b>118.0 348.6</b>	CPDLC
------------------------	--	-------------------------------------	-------------------------------	--------------------------------	-------

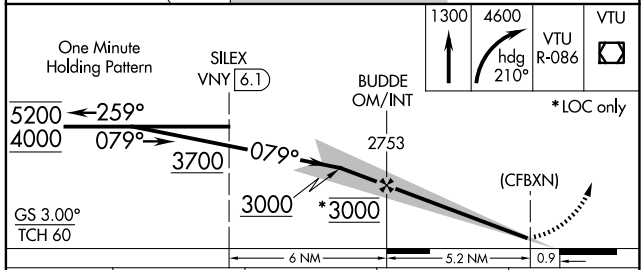


ELEV 778	<b>D</b>	TDZE 727
----------	----------	----------



MIRL Rwy 15-33  
 HIRL Rwy 8-26  
 REIL Rwys 15, 26 and 33  
 FAF to MAP 5.2 NM

Knots	60	90	120	150	180
Min:Sec	5:12	3:28	2:36	2:05	1:44



CATEGORY	A	B	C	D
S-ILS 8 #		1075/50	348 (300-1)	
S-LOC 8 #		1160/50	433 (400-1)	
CIRCLING	1280-1 1/8 502 (600-1 1/8)	1640-1 1/4 862 (900-1 1/4)	2240-3 1462 (1500-3)	2320-3 1542 (1600-3)

SW-3, 14 MAY 2026 to 11 JUN 2026

SW-3, 14 MAY 2026 to 11 JUN 2026