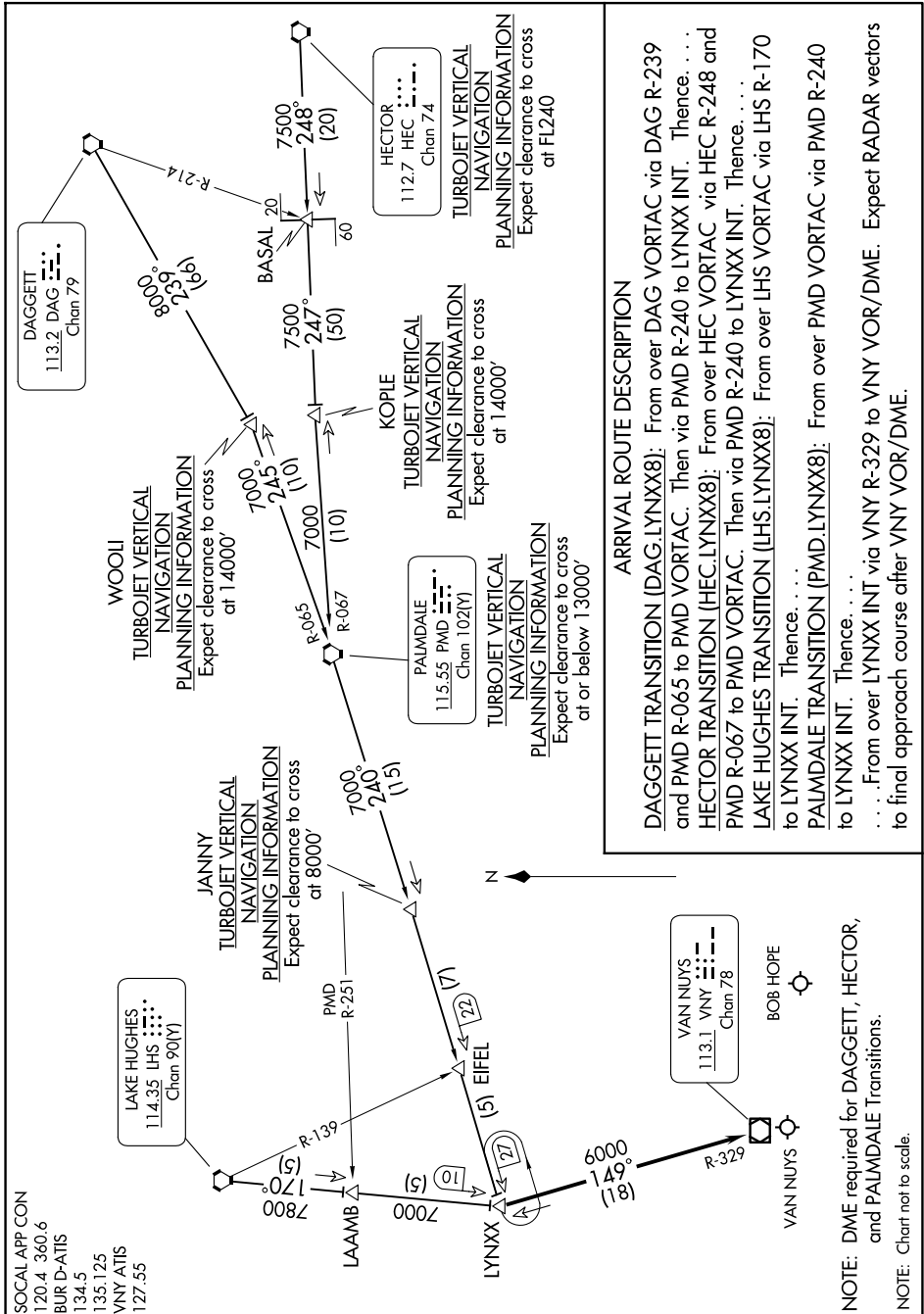


LYNXX EIGHT ARRIVAL

AL-67 (FAA)

BURBANK, CALIFORNIA

SW-3, 14 MAY 2026 to 11 JUN 2026



ARRIVAL ROUTE DESCRIPTION

DAGGETT TRANSITION (DAG.LYNXX8): From over DAG VORTAC via DAG R-239 and PMD R-065 to PMD VORTAC. Then via PMD R-240 to LYNXX INT. Thence, . . .

HECTOR TRANSITION (HEC.LYNXX8): From over HEC VORTAC via HEC R-248 and PMD R-067 to PMD VORTAC. Then via PMD R-240 to LYNXX INT. Thence, . . .

LAKE HUGHES TRANSITION (LHS.LYNXX8): From over LHS VORTAC via LHS R-170 to LYNXX INT. Thence, . . .

PALMDALE TRANSITION (PMD.LYNXX8): From over PMD VORTAC via PMD R-240 to LYNXX INT. Thence, . . .

From over LYNXX INT via VNY R-329 to VNY VOR/DME: Expect RADAR vectors to final approach course after VNY VOR/DME.

NOTE: DME required for DAGGETT, HECTOR, and PALMDALE Transitions.

NOTE: Chart not to scale.

SW-3, 14 MAY 2026 to 11 JUN 2026

LYNXX EIGHT ARRIVAL

BURBANK, CALIFORNIA