

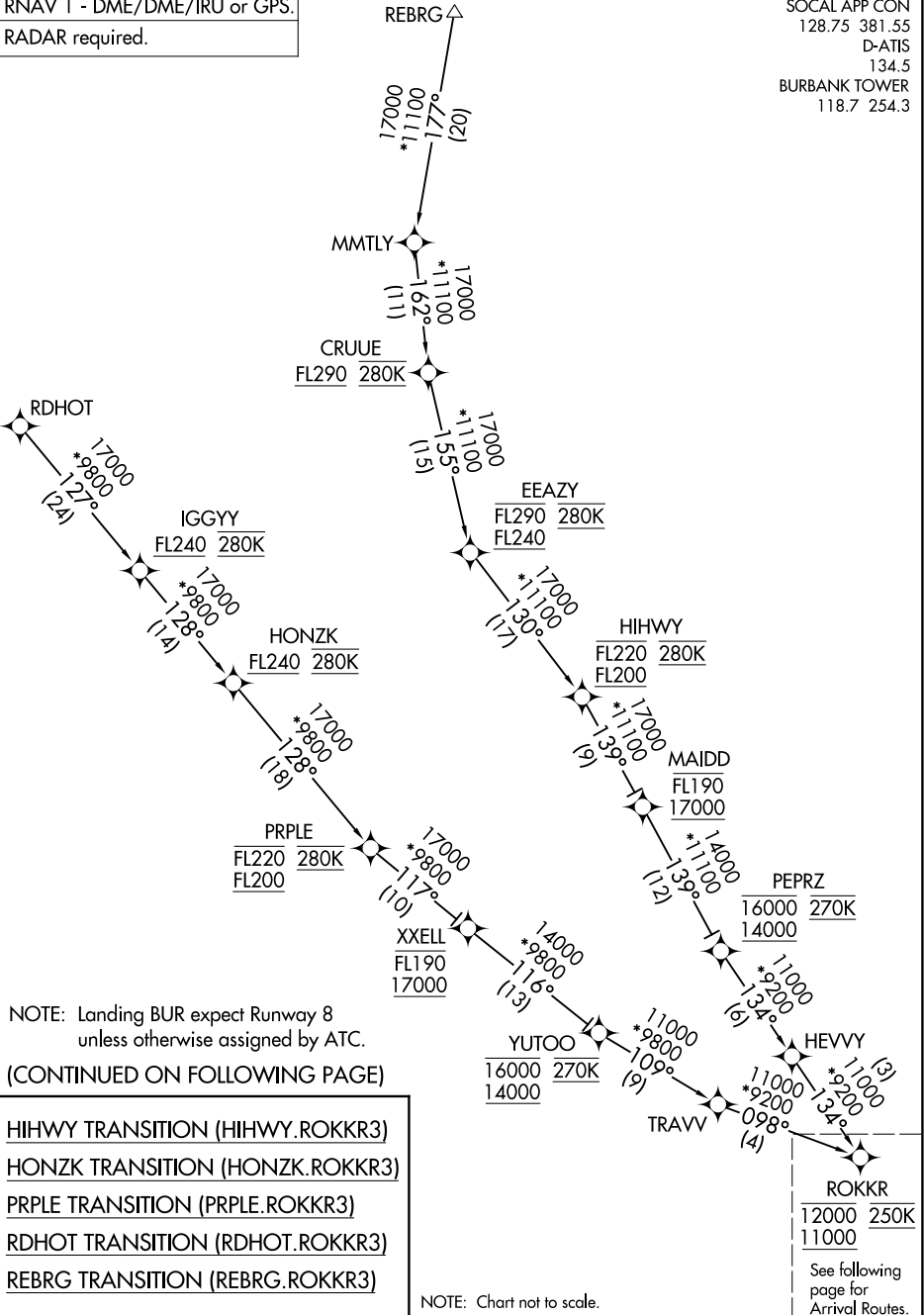
ROKKR THREE ARRIVAL (RNAV) Transition Routes

AL-67 (FAA)

BOB HOPE (BUR)
BURBANK, CALIFORNIA

RNAV 1 - DME/DME/IRU or GPS.
RADAR required.

SOCAL APP CON
128.75 381.55
D-ATIS
134.5
BURBANK TOWER
118.7 254.3



SW-3, 14 MAY 2026 to 11 JUN 2026

SW-3, 14 MAY 2026 to 11 JUN 2026

NOTE: Landing BUR expect Runway 8 unless otherwise assigned by ATC.

(CONTINUED ON FOLLOWING PAGE)

- HIHWY TRANSITION (HIHWY.ROKKR3)
- HONZK TRANSITION (HONZK.ROKKR3)
- PRPLE TRANSITION (PRPLE.ROKKR3)
- RDHOT TRANSITION (RDHOT.ROKKR3)
- REBRG TRANSITION (REBRG.ROKKR3)

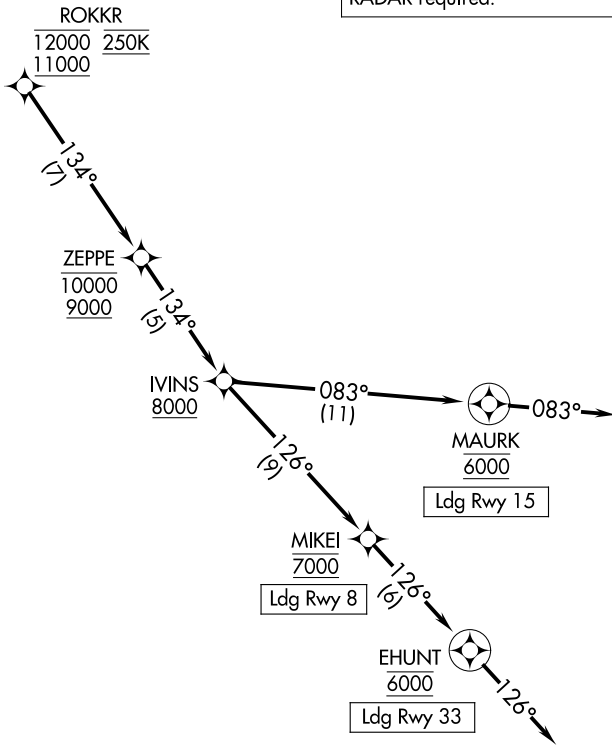
NOTE: Chart not to scale.

ROKKR THREE ARRIVAL (RNAV) Transition Routes

BURBANK, CALIFORNIA
BOB HOPE (BUR)

RNAV 1 - DME/DME/IRU or GPS.
RADAR required.

SOCAL APP CON
128.75 381.55
D-ATIS
134.5
BURBANK TOWER
118.7 254.3



SW-3, 14 MAY 2026 to 11 JUN 2026

SW-3, 14 MAY 2026 to 11 JUN 2026

NOTE: Landing BUR expect Runway 8 unless otherwise assigned by ATC.

NOTE: Chart not to scale.

ARRIVAL ROUTE DESCRIPTION

From ROKKR on track 134° to cross ZEPPE between 9000 and 10000, then on track 134° to cross IVINS at or above 8000.

LANDING RUNWAY 8: From IVINS on track 126° to cross MIKEI at 7000. Expect ILS or LOC RWY 8 approach.

LANDING RUNWAY 15: From IVINS on track 083° to cross MAURK at 6000, then on track 083°. Expect RADAR vectors to final approach course.

LANDING RUNWAY 33: From IVINS on track 126° to cross MIKEI at 7000, then on track 126° to cross EHUNT at 6000, then on track 126°. Expect RADAR vectors to final approach course.