

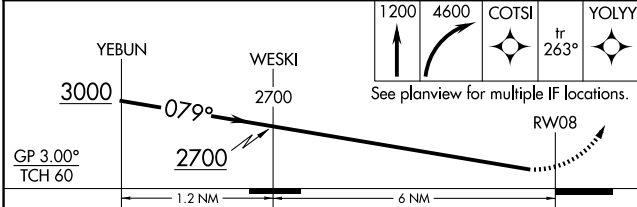
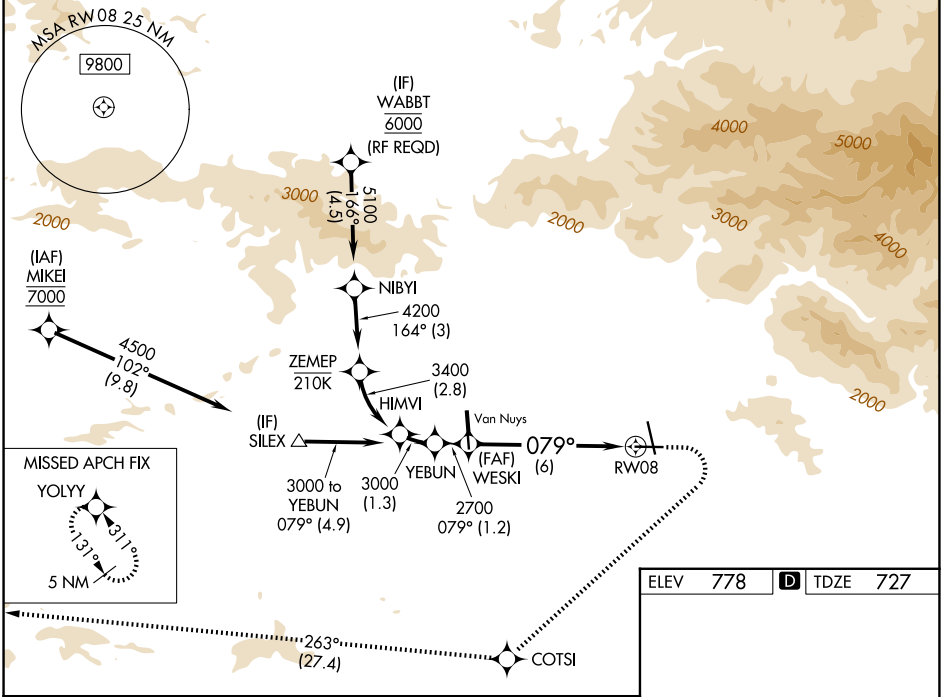
APP CRS	Rwy Ldg	5801
079°	TDZE	727
	Apt Elev	778

RNAV (RNP) Y RWY 8

BOB HOPE (BUR)

RNP AR APCH.		MALSR	MISSED APPROACH: Climb to 1200 then climbing right turn to 4600 direct COTSI and on track 263° to YOLYY and hold. *Missed approach requires minimum climb of 340 feet per NM to 2400. # Missed approach requires minimum climb of 317 feet per NM to 2400.
For uncompensated Baro-VNAV systems, procedure NA below 1°C or above 54°C. Straight-in Rwy 8 at night, operational VGSi required, remain on or above VGSi glidepath until threshold. Inop table does not apply to RNP 0.20* and RNP 0.30. For inop ALS, increase RNP 0.30# all Cats visibility to 1¼ SM.			

D-ATIS	SOCAL APP CON	BURBANK TOWER	GND CON	CLNC DEL	CPDLC
134.5	120.4 360.6 (NORTH) 134.2 338.2 (WEST)	118.7 254.3	123.9 348.6	118.0 348.6	



GP 3.00°	TCH 60	1.2 NM		6 NM	
CATEGORY	A	B	C	D	
RNP 0.20 DA*		1068/50	341 (300-1)		
RNP 0.30 DA#		1151/50	424 (400-1)		
RNP 0.30 DA		1485-2½	758 (800-2½)		

ELEV	778	TDZE	727
------	-----	------	-----

MIRL Rwy 15-33
HIRL Rwy 8-26
REIL Rwy 15, 26 and 33

AUTHORIZATION REQUIRED

SW-3, 14 MAY 2026 to 11 JUN 2026

SW-3, 14 MAY 2026 to 11 JUN 2026