

(THRNE:THRNE4) 20FEB25

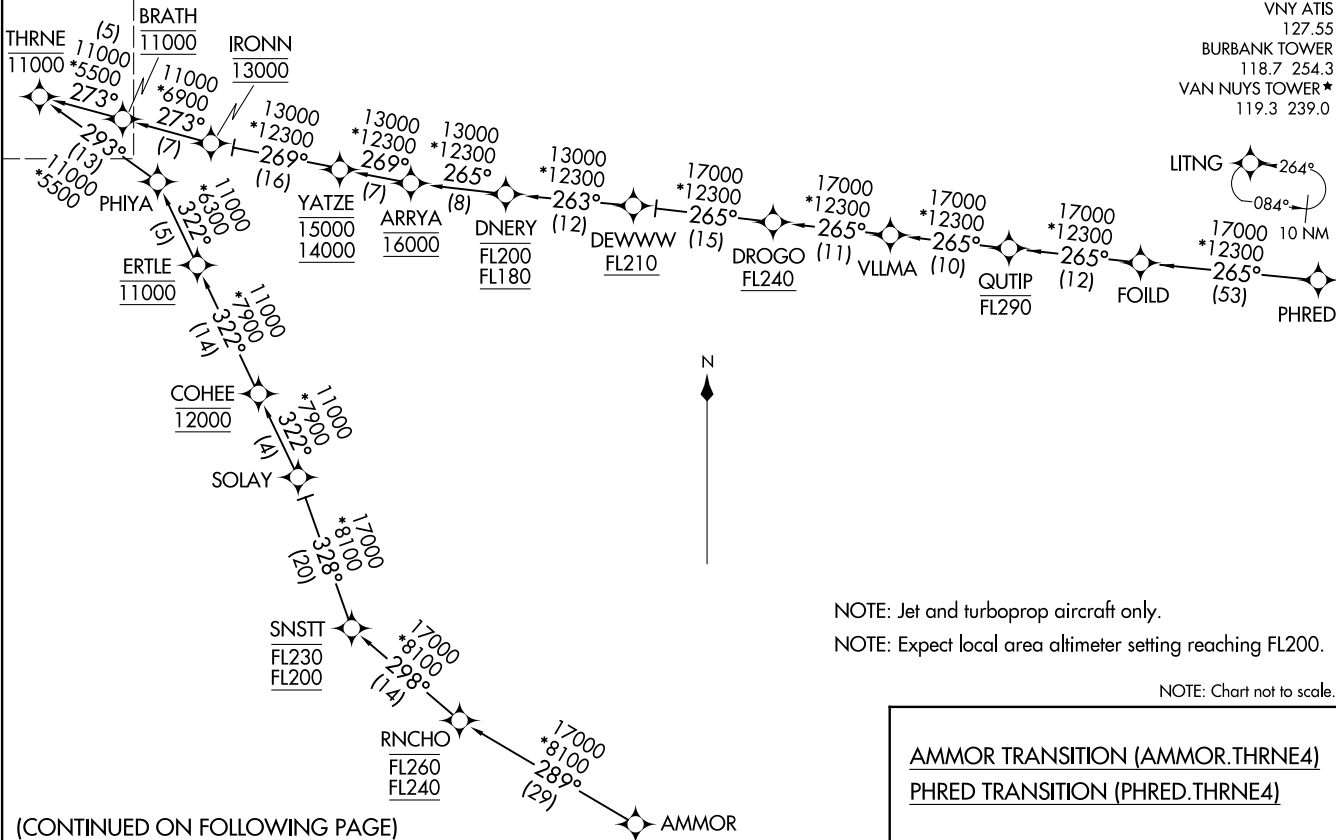
THRNE FOUR ARRIVAL (RNAV) Transition Routes

BURBANK, CALIFORNIA

See following page for arrival routes.

RNAV 1 - DME/DME/IRU or GPS.  
RADAR required.

- SOCAL APP CON 126.7 370.95
- BUR D-ATIS 134.5
- VNY ATIS 127.55
- BURBANK TOWER 118.7 254.3
- VAN NUYS TOWER\* 119.3 239.0



(THRNE:THRNE4) 25051

THRNE FOUR ARRIVAL (RNAV) Transition Routes

Alt: 67 (FAA)

BURBANK, CALIFORNIA

NOTE: Jet and turboprop aircraft only.  
NOTE: Expect local area altimeter setting reaching FL200.

NOTE: Chart not to scale.

AMMOR TRANSITION (AMMOR.THRNE4)  
PHRED TRANSITION (PHRED.THRNE4)

(CONTINUED ON FOLLOWING PAGE)

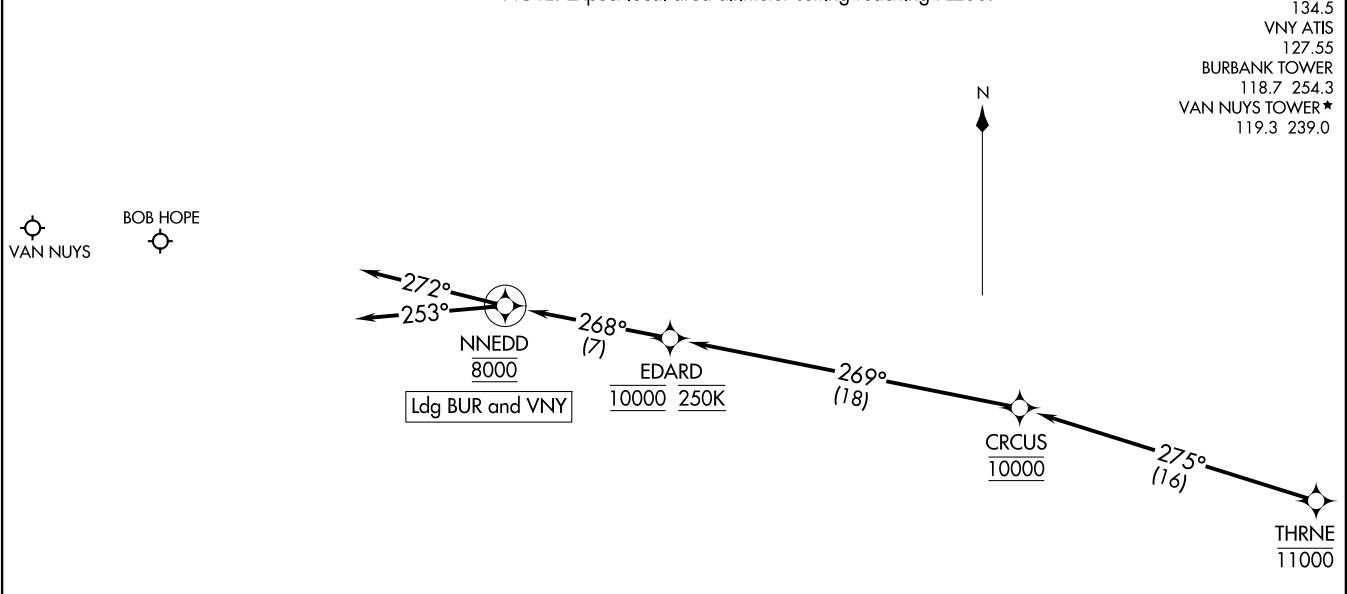
THRNE FOUR ARRIVAL (RNAV) Arrival Routes  
 (THRNE: THRNE4) 20FEB25

(THRNE: THRNE4) 25051  
 THRNE FOUR ARRIVAL (RNAV) Arrival Routes  
 A1-67 (FAA) BURBANK, CALIFORNIA

RNAV 1 - DME/DME/IRU or GPS.  
 RADAR required.

NOTE: Jet and turboprop aircraft only.  
 NOTE: Expect local area altimeter setting reaching FL200.

SOCAL APP CON  
 126.7 370.95  
 BUR D-ATIS  
 134.5  
 VNY ATIS  
 127.55  
 BURBANK TOWER  
 118.7 254.3  
 VAN NUYS TOWER ★  
 119.3 239.0



ARRIVAL ROUTE DESCRIPTION

LANDING BUR: From THRNE on track 275° to cross CRCUS at 10000, then on track 269° to cross EDARD at 10000 and at 250K, then on track 268° to cross NNEDD at 8000, then on track 253° . Expect RADAR vectors to final approach course.

LANDING VNY: From THRNE on track 275° to cross CRCUS at 10000, then on track 269° to cross EDARD at 10000 and at 250K, then on track 268° to cross NNEDD at 8000, then on track 272° . Expect RADAR vectors to final approach course.

NOTE: Chart not to scale.

BURBANK, CALIFORNIA