

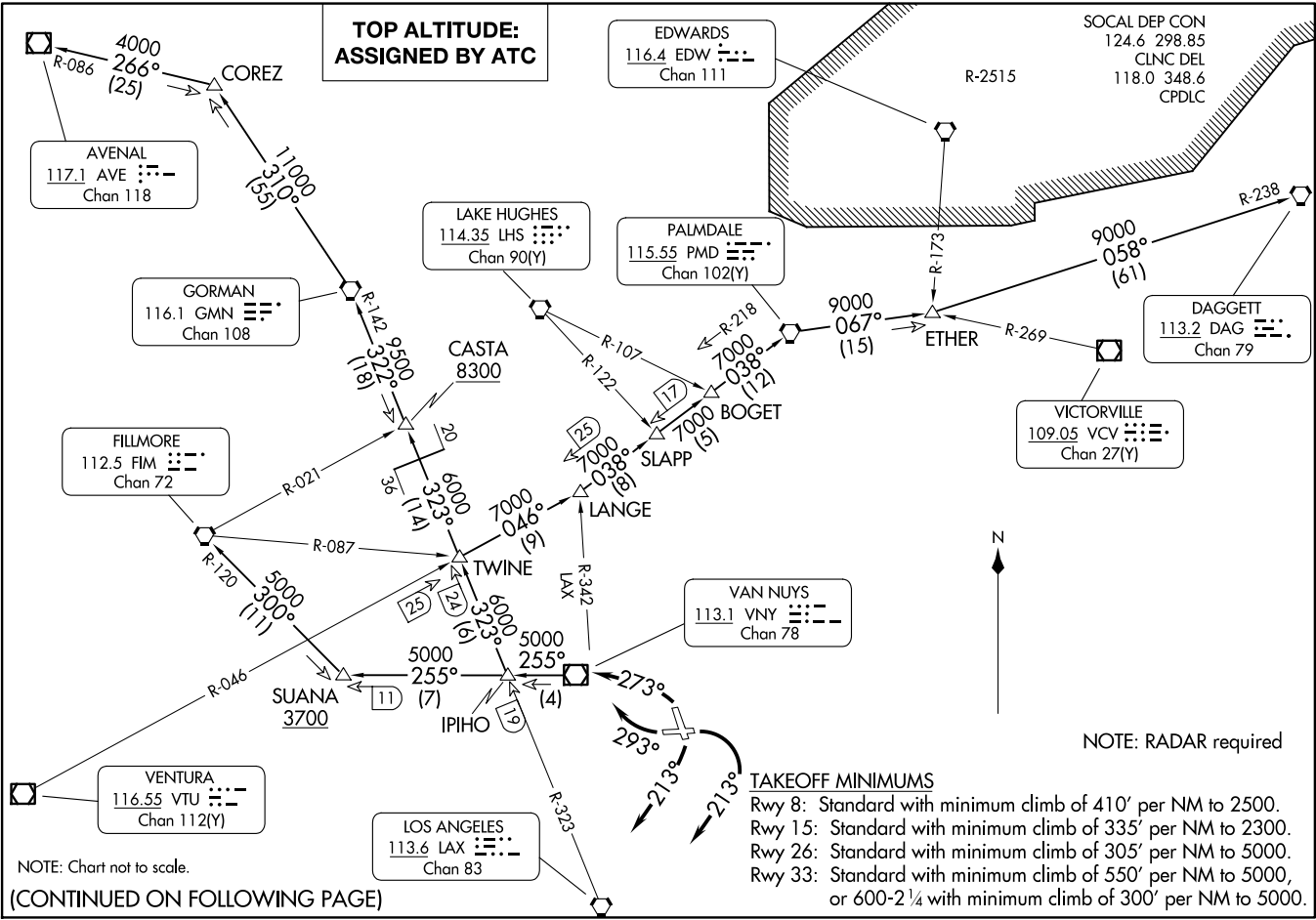
VAN NUYS THREE DEPARTURE
(VNY3.VNY) 26MAY16

VAN NUYS THREE DEPARTURE
(VNY3.VNY) 23334

AL-67 (FAAN)

BOB HOPE (BTR)
BURBANK, CALIFORNIA

**TOP ALTITUDE:
ASSIGNED BY ATC**



NOTE: Chart not to scale.

(CONTINUED ON FOLLOWING PAGE)

BURBANK, CALIFORNIA
BOB HOPE (BTR)



DEPARTURE ROUTE DESCRIPTION

TAKEOFF RUNWAY 8: Climbing right turn heading 213°

TAKEOFF RUNWAY 15: Climbing right turn heading 213°

TAKEOFF RUNWAY 26: Climbing right turn heading 293°

TAKEOFF RUNWAY 33: Climbing left turn heading 273°

. . . .expect RADAR vector to VNY VOR/DME. Thence via (transition) or (assigned route).

AVENAL TRANSITION (VNY3.AVE): From over VNY VOR/DME on VNY R-255 and LAX R-323 to TWINE, then on LAX R-323 and GMN R-142 to GMN VORTAC, then on GMN R-310 and AVE R-086 to AVE VOR/DME.

DAGGETT TRANSITION (VNY3.DAG): From over VNY VOR/DME on VNY R-255 and LAX R-323 to TWINE, then on VTU R-046 and PMD R-218 to PMD VORTAC, then on PMD R-067 and DAG R-238 to DAG VORTAC.

FILLMORE TRANSITION (VNY3.FIM): From over VNY VOR/DME on VNY R-255 and FIM R-120 to FIM VORTAC.

GORMAN TRANSITION (VNY3.GMN): From over VNY VOR/DME on VNY R-255 and LAX R-323 to TWINE, then on LAX R-323 and GMN R-142 to GMN VORTAC.

PALMDALE TRANSITION (VNY3.PMD): From over VNY VOR/DME on VNY R-255 and LAX R-323 to TWINE, then on VTU R-046 and PMD R-218 to PMD VORTAC.

TWINE TRANSITION (VNY3.TWINE): From over VNY VOR/DME on VNY R-255 and LAX R-323 to TWINE.

SW-3, 14 MAY 2026 to 11 JUN 2026

SW-3, 14 MAY 2026 to 11 JUN 2026