

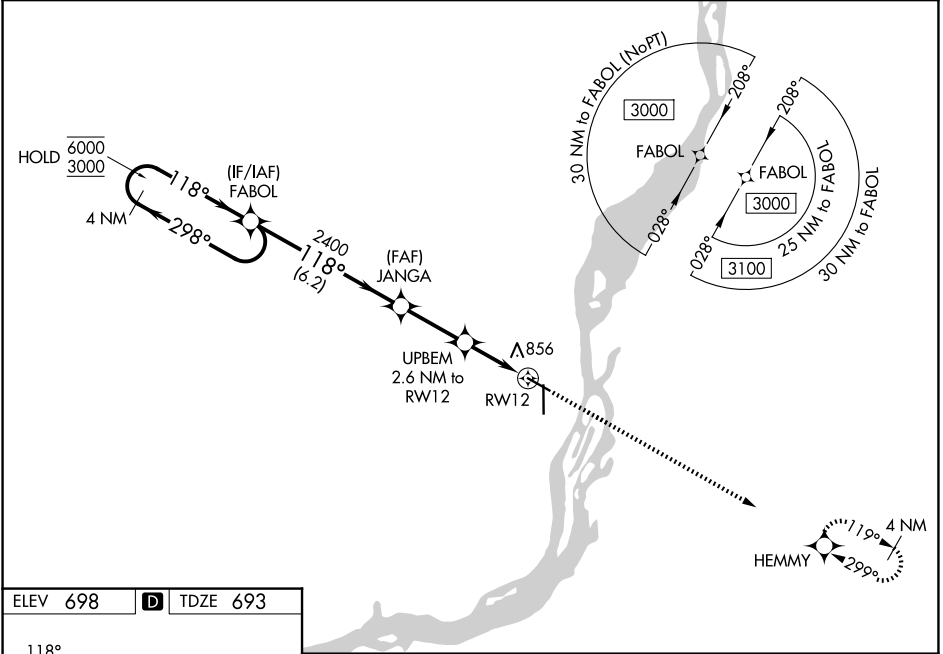
WAAS CH 48834 W12A	APP CRS 118°	Rwy Ldg TDZE Apt Elev	5350 693 698
--	------------------------	-----------------------------	---

RNAV (GPS) RWY 12

SOUTHEAST IOWA RGNL (B.R.L.)

RNP APCH.	MISSED APPROACH: Climb to 3000 direct HEMMY and hold.
For uncompensated Baro-VNAV systems, procedure NA below -21°C or above 54°C.	

ASOS 118.025	CHICAGO CENTER 135.6 370.95	UNICOM 123.0 (CTAF) 0
------------------------	---------------------------------------	---------------------------------



NC-3, 14 MAY 2026 to 11 JUN 2026

NC-3, 14 MAY 2026 to 11 JUN 2026

ELEV 698 **D** TDZE 693

118°
6000
3000
GP 3.00°
TCH 39
5351 X 100
81
6102 X 100
0.2% UP
36
35

MIRL Rwy 12-30 **0**
HIRL Rwy 18-36 **0**
REIL Rwy 12, 18 and 30 **0**

	4 NM Holding Pattern	FABOL	JANGA	UPBEM 2.6 NM to RWY 12	3000	HEMMY
	6000 ← 298°	118° →	2400	*1.2 NM to RWY 12	↑	✦
	3000	240°	*1540	RWY 12		
	GP 3.00° TCH 39	6.2 NM	2.6 NM	1.4		
CATEGORY	A	B	C	D		
LPV DA	943-1 250 (300-1)			NA		
LNAV/VNAV DA	1017-1½ 324 (400-1½)			NA		
LNAV MDA	1120-1 427 (500-1)	1120-1¼ 427 (500-1¼)		NA		
CIRCLING	1180-1 482 (500-1)	1380-2 682 (700-2)		NA		