

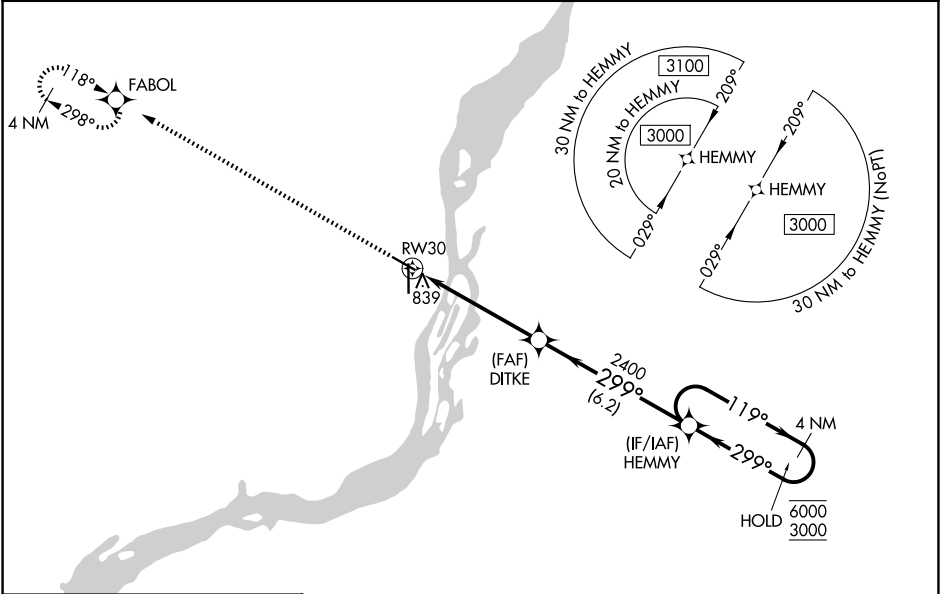
WAAS CH 45535 W30A	APP CRS 299°	Rwy Ldg 4850 TDZE 697 Apt Elev 698
--	------------------------	---

RNAV (GPS) RWY 30

SOUTHEAST IOWA RGNL (B.R.L.)

RNP APCH.	<p>MISSED APPROACH: Climb to 3000 direct FABOL and hold.</p>
<p>▽ Rwy 30 helicopter visibility reduction below ¾ SM NA. ▲ For uncompensated Baro-VNAV systems, procedure NA below -21°C or above 54°C.</p>	

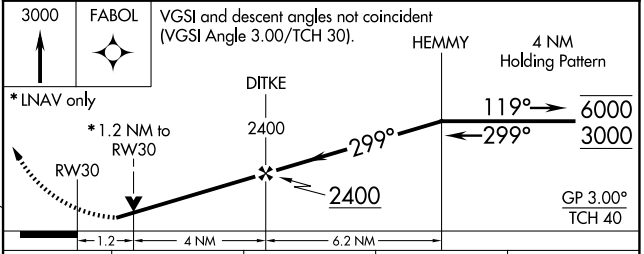
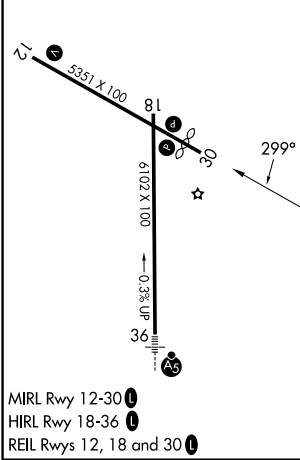
ASOS 118.025	CHICAGO CENTER 135.6 370.95	UNICOM 123.0 (CTAF) 📻
------------------------	---------------------------------------	--



NC-3, 14 MAY 2026 to 11 JUN 2026

NC-3, 14 MAY 2026 to 11 JUN 2026

ELEV 698	D	TDZE 697
----------	----------	----------



CATEGORY	A	B	C	D
LPV DA	995-1 298 (300-1)			NA
LNAV/VNAV DA	989-1 292 (300-1)			NA
LNAV MDA	1100-1 403 (500-1)	1100-1 ¼ 403 (500-1 ½)		NA
CIRCLING	1180-1 482 (500-1)		1380-2 682 (800-2)	NA