

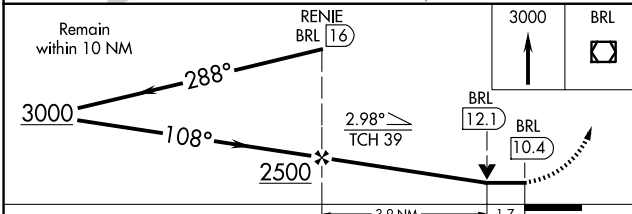
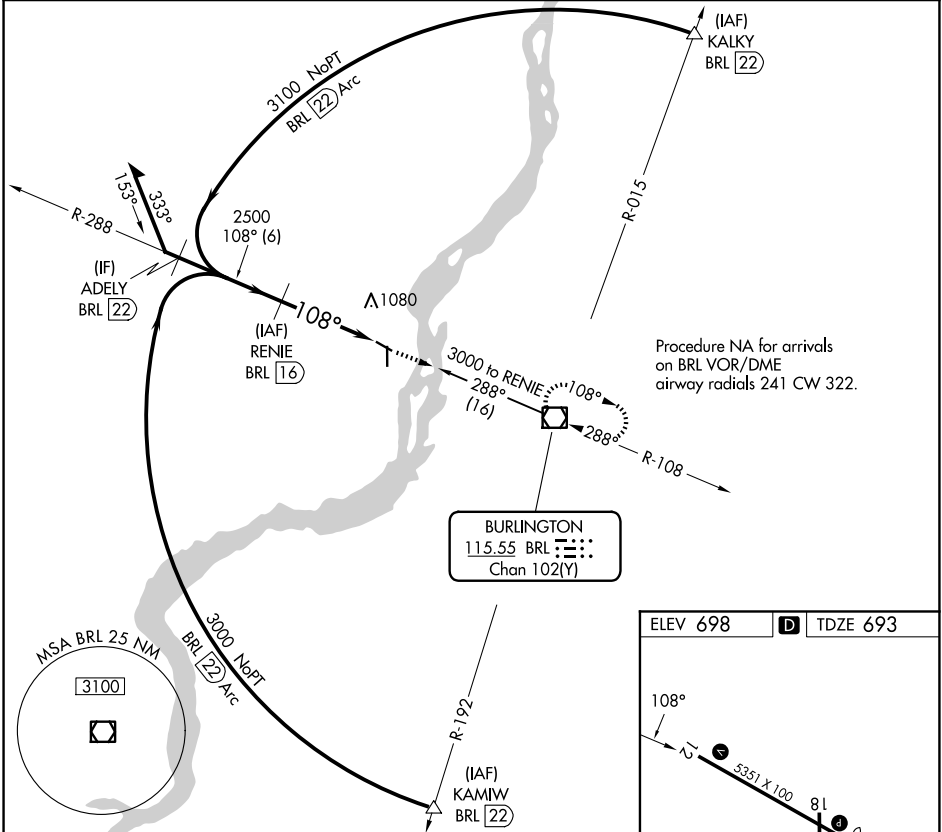
VOR/DME BRL 115.55 Chan 102(Y)	APP CRS 108°	Rwy Ldg TDZE Apt Elev	5350 693 698
--	------------------------	-----------------------------	---

VOR RWY 12

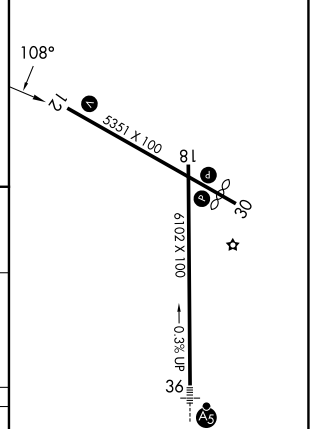
SOUTHEAST IOWA RGNL (B.R.L.)

DME required.		MISSED APPROACH: Climb to 3000 direct BRL VOR/DME and hold.	
---------------	--	---	--

ASOS 118.025	CHICAGO CENTER 135.6 370.95	UNICOM 123.0 (CTAF) 0
------------------------	---------------------------------------	---------------------------------



ELEV 698	TDZE 693
----------	----------



CATEGORY	A	B	C	D
S-12	1280-1	587 (600-1)	1280-1¾ 587 (600-1¾)	NA
CIRCLING	1280-1	582 (600-1)	1380-2 682 (700-2)	NA

- MIRL Rwy 12-30
- HIRL Rwy 18-36
- REIL Rws 12, 18 and 30

NC-3, 14 MAY 2026 to 11 JUN 2026

NC-3, 14 MAY 2026 to 11 JUN 2026