

WAAS CH <b>72736</b> <b>W15A</b>	APP CRS <b>146°</b>	Rwy Ldg TDZE Apt Elev	<b>7820</b> <b>326</b> <b>335</b>
--	------------------------	-----------------------------	---

# RNAV (GPS) RWY 15

PATRICK LEAHY BURLINGTON INTL (BTV)

RNP APCH - GPS.

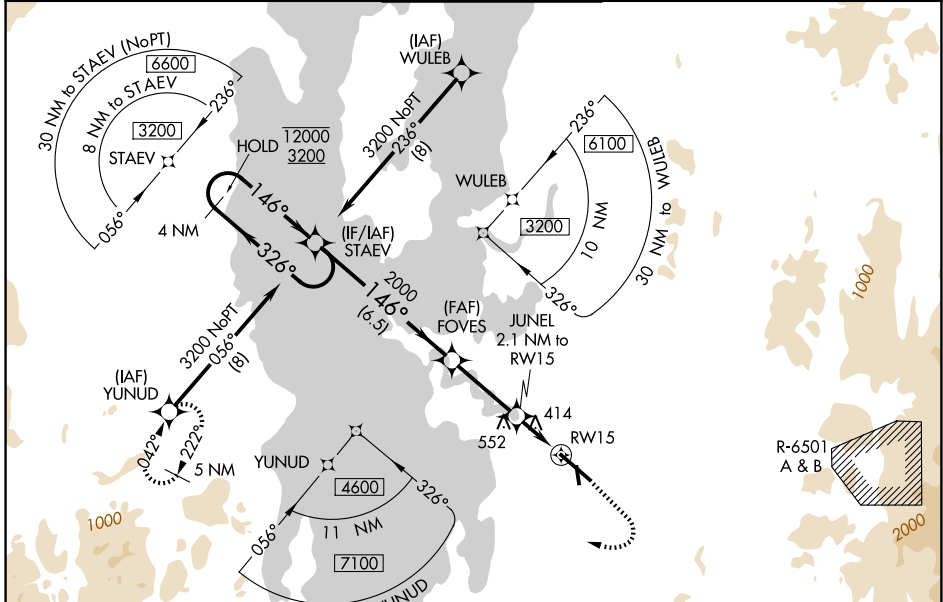
**⚠** Circling Rwy 1 NA at night. Rwy 15 helicopter visibility reduction below RVR 4000 NA. Inop table does not apply to LPV. For uncompensated Baro-VNAV systems, LNAV/VNAV NA below -22°C or above 54°C. For inop ALS, increase LNAV/VNAV all Cats visibility to RVR 4500 and LNAV all Cats visibility to RVR 5500.

**⚠** -9°C

MALSR

MISSED APPROACH: Climb to 1000 then climbing right turn to 5600 direct YUNUD and hold, continue climb-in-hold to 5600.

ATIS <b>123.8 269.9</b>	BURLINGTON APP CON ★ <b>121.1 278.8</b>	BURLINGTON TOWER ★ <b>118.3 (CTAF) 0 257.8</b>	GND CON <b>126.3 348.6</b>	UNICOM <b>122.95</b>
----------------------------	--	---	-------------------------------	-------------------------



NE-1, 14 MAY 2026 to 11 JUN 2026

NE-1, 14 MAY 2026 to 11 JUN 2026

ELEV 335	<b>D</b> TDZE 326
----------	-------------------

4 NM Holding Pattern STAEV

12000 ← 326°

3200 → 146°

GP 3.00° TCH 51

FOVES 2000

JUNEL 2.1 NM to RW15

1020

Distances: 6.5 NM, 3.1 NM, 1.1 NM, 1 NM

1000

5600

YUNUD

146°

0.6% UP

TWR

MIRL Rwy 1-19 **0**

HIRL Rwy 15-33 **0**

CATEGORY	A	B	C	D
LPV DA		576/40	250 (300-¾)	
LNAV/VNAV DA		645/40	319 (400-¾)	
LNAV MDA		680/40	354 (400-¾)	
CIRCLING	840-1 505 (600-1)	860-1 525 (600-1)	1220-2¾ 885 (900-2¾)	1380-3 1045 (1100-3)