

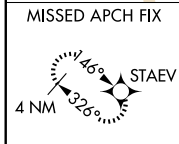
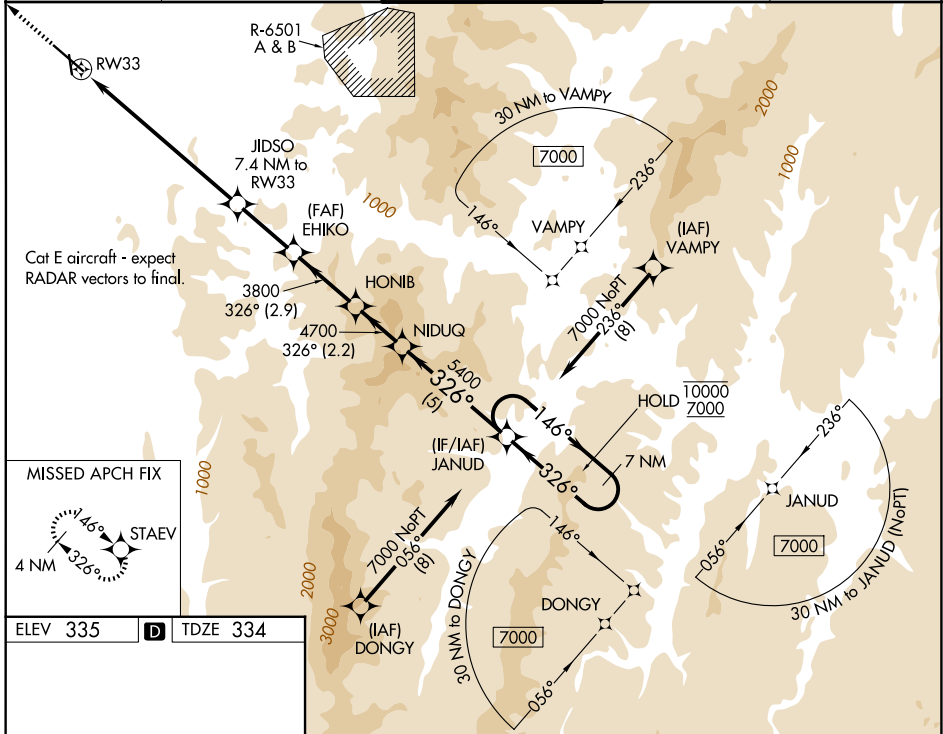
WAAS CH <b>65812</b> <b>W33A</b>	APP CRS <b>326°</b>	Rwy Ldg <b>7819</b> TDZE <b>334</b> Apt Elev <b>335</b>
--	------------------------	---

# RNAV (GPS) Z RWY 33

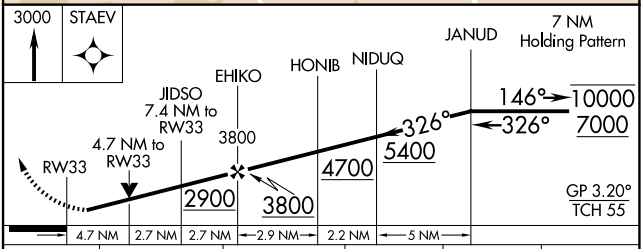
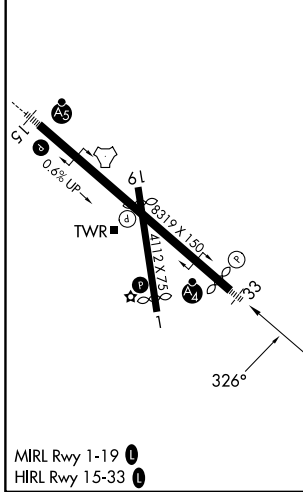
PATRICK LEAHY BURLINGTON INTL (BT'V)

RNP APCH - GPS.		MALSF	MISSED APPROACH: Climb to 3000 direct STAEV and hold.
Rwy 33 helicopter visibility reduction below RVR 4000 NA. Inop table does not apply. For uncompensated Baro-VNAV systems, LNAV/VNAV NA below -22°C or above 37°C.			

ATIS <b>123.8 269.9</b>	BURLINGTON APP CON * <b>121.1 278.8</b>	BURLINGTON TOWER * <b>118.3 (CTAF) 0 257.8</b>	GND CON <b>126.3 348.6</b>	UNICOM <b>122.95</b>
----------------------------	--	---	-------------------------------	-------------------------



ELEV 335	<b>D</b>	TDZE 334
----------	----------	----------



CATEGORY	A	B	C	D	E
LPV DA	584/40		250 (300-¾)		
LNAV/VNAV DA	1782-5		1448 (1500-5)		
LNAV MDA	2000-1¼ 1666 (1700-1¼)		2000-3 1666 (1700-3)		

NE-1, 14 MAY 2026 to 11 JUN 2026

NE-1, 14 MAY 2026 to 11 JUN 2026