

WAAS CH <b>81835</b> <b>W03A</b>	APP CRS <b>034°</b>	Rwy Ldg TDZE Apt Elev	<b>7504</b> <b>3295</b> <b>3295</b>
--	------------------------	-----------------------------	---

# RNAV (GPS) RWY 3

CAVERN CITY AIR TRML (CNM)

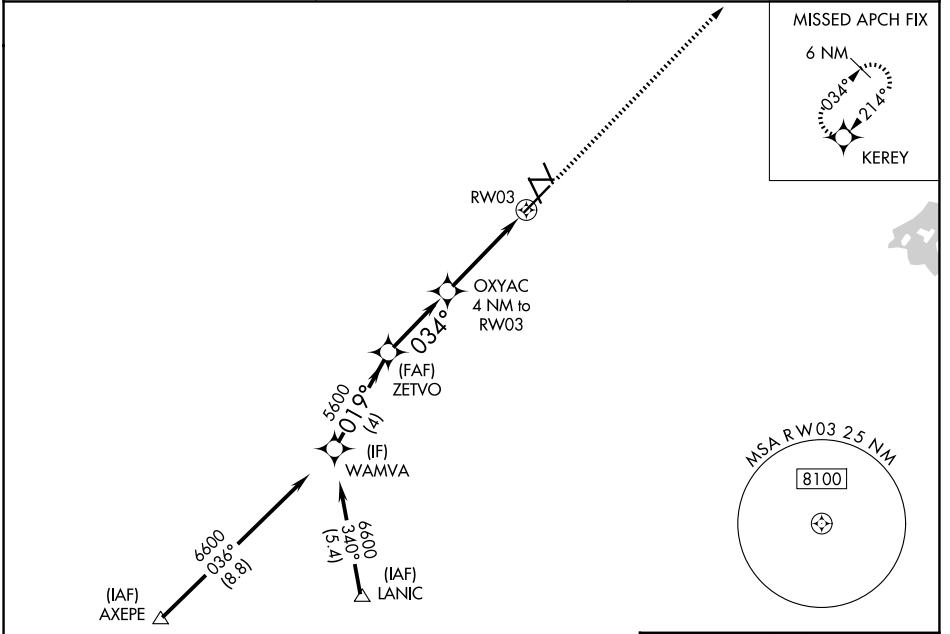
**⚠** For uncompensated Baro-VNAV systems, LNAV/VNAV NA below -10°C (14°F) or above 52°C (126°F). DME/DME RNP-0.3 NA. For inop MALS, increase LNAV Cat C/D visibility to 2½ miles, and increase LNAV/VNAV all Cats visibility to ¾ mile.

**MALS**  
**⚠** MISSED APPROACH: Climb to 5600 direct KEREY and hold.

ASOS  
**118.375**

ALBUQUERQUE CENTER  
**135.875 292.15**

UNICOM  
**123.0 (CTAF) 0**



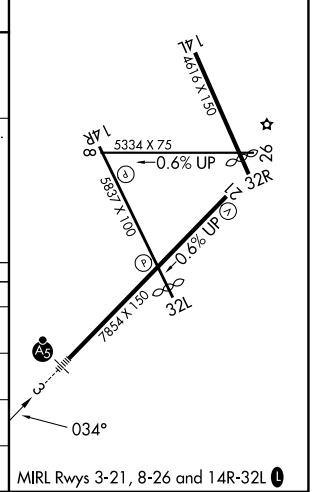
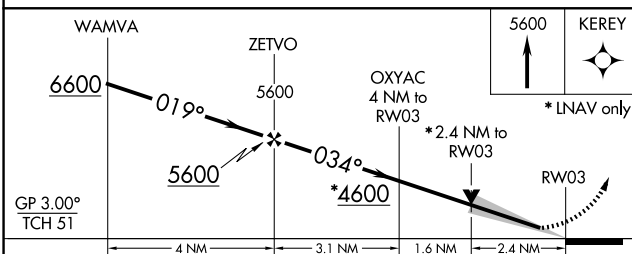
SW-1, 14 MAY 2026 to 11 JUN 2026

SW-1, 14 MAY 2026 to 11 JUN 2026

Procedure NA for arrivals at AXEPE on V102 southwest bound.

Procedure NA for arrivals at LANIC on V560 southwest bound.

ELEV 3295 **D** TDZE 3295



CATEGORY	A	B	C	D
LPV DA		3495-½	200 (200-½)	
LNAV/VNAV DA		3545-½	250 (300-½)	
LNAV MDA	4100-½ 805 (900-½)	4100-¾ 805 (900-¾)	4100-1⅞	805 (900-1⅞)
CIRCLING	4100-1 805 (900-1)	4100-1¼ 805 (900-1¼)	4100-2½ 805 (900-2½)	4260-3 965 (1000-3)