

(ALCOS6.ALCOS) 25079
ALCOS SIX DEPARTURE

AL-72 (FAA)

CASPER/NATRONA COUNTY INTL (CPR)
 CASPER, WYOMING

ATIS
 126.15
 CLNC DEL
 121.9 257.8
 GND CON
 121.9
 CASPER TOWER ★
 118.3 (CTAF) 257.8
 CASPER DEP CON ★
 120.65 354.1
 DENVER CENTER
 135.6 363.025

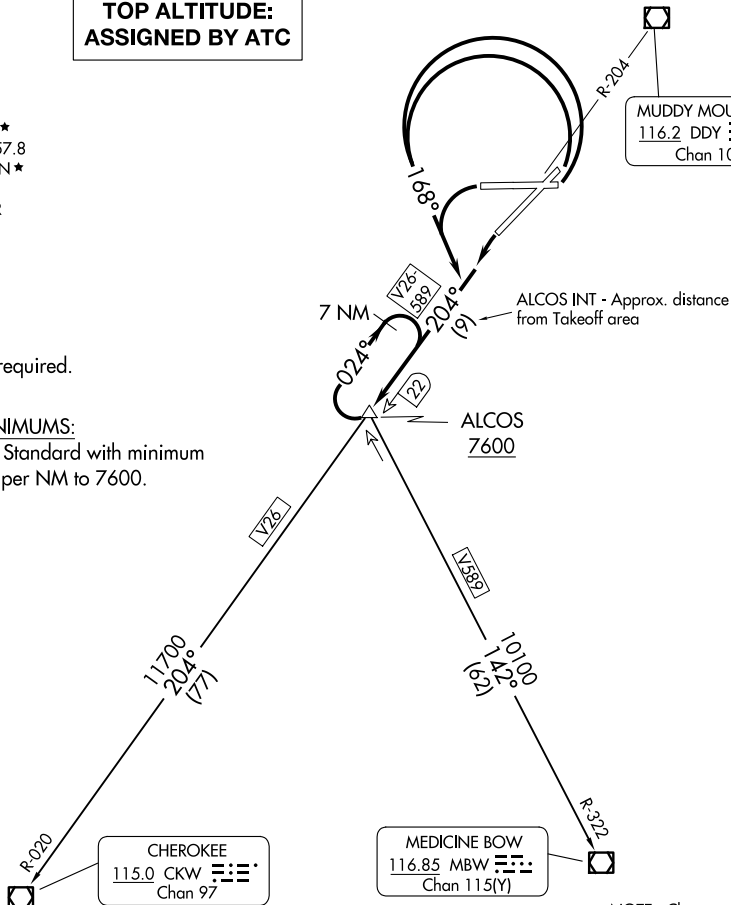
**TOP ALTITUDE:
 ASSIGNED BY ATC**

MUDDY MOUNTAIN
 116.2 DDY ---
 Chan 109

NOTE: DME required.

TAKEOFF MINIMUMS:

All Runways: Standard with minimum
 climb of 300' per NM to 7600.



NOTE: Chart not to scale.

DEPARTURE ROUTE DESCRIPTION

TAKEOFF RUNWAYS 3, 8, 26: Turn left heading 168°, thence. . .

TAKEOFF RUNWAY 21: Turn left, thence. . .

. . . climb on DDY VOR/DME R-204 to cross ALCOS INT 22 DME at or above 7600,
 climb-in-hold to MEA for direction of flight, then via (transition) or (assigned route).

CHEROKEE TRANSITION (ALCOS6.CKW): From over ALCOS on DDY R-204 and
 CKW R-020 to CKW VOR/DME.

MEDICINE BOW TRANSITION (ALCOS6.MBW): From over ALCOS on MBW R-322 to
 MBW VOR/DME.

ALCOS SIX DEPARTURE
 (ALCOS6.ALCOS) 21JUL16

CASPER, WYOMING
 CASPER/NATRONA COUNTY INTL (CPR)

NW-1, 14 MAY 2026 to 11 JUN 2026

NW-1, 14 MAY 2026 to 11 JUN 2026