

LOC I-SYD <b>111.3</b>	APP CRS <b>032°</b>	Rwy Ldg TDZE Apt Elev	<b>10165</b> <b>5328</b> <b>5344</b>
---------------------------	------------------------	-----------------------------	--

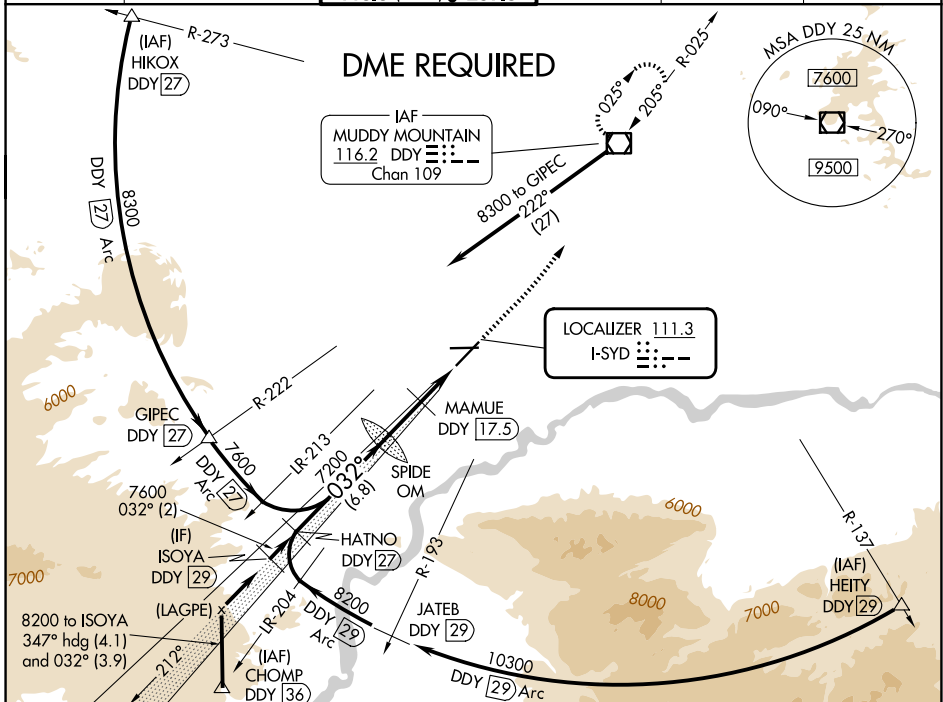
# ILS or LOC RWY 3

CASPER/NATRONA COUNTY INTL (CPR)

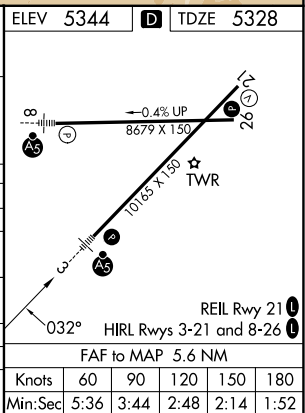
**⚠ DME from DDY VOR/DME. Simultaneous reception of I-SYD and DDY DME required. When local altimeter setting not received, use Douglas altimeter setting and increase DA to 5697 feet and all MDAs 180 feet, increase S-ILS visibility all Cats ¼ SM and S-LOC visibility Cat B, C, D and Circling Cats B, C, D visibility ½ SM, increase MAMUE FIX MINIMUM Circling visibility Cat C ½ SM and Cat D ¼ SM. For inoperative MALSRS when using Douglas altimeter setting increase S-ILS visibility all Cats to 1 ½ mile. MAMUE FIX MINIMUMS: For inoperative MALSRS, increase S-LOC visibility Cats C, and D to 1 ½ mile. #RVR 1800 authorized with use of FD or AP or HUD to DA.**

**MALSRS**  
MISSED APPROACH:  
Climb to 7500  
then left turn direct  
DDY VOR/DME  
and hold.

ATIS <b>126.15</b>	CASPER APP CON * <b>120.65 354.1</b>	CASPER TOWER * <b>118.3 (CTAF) 257.8</b>	GND CON <b>121.9</b>	CLNC DEL <b>121.9 257.8</b>	UNICOM <b>122.95</b>
-----------------------	---	---	-------------------------	--------------------------------	-------------------------



ISOYA DDY 29	*6400 when using Douglas altimeter setting.		7500	DDY	ELEV 5344	D	TDZE 5328
8200	032°	7600	7200	*6220	DDY 14.7	*LOC only	
GS 3.00° TCH 50	2 NM	6.8 NM	2.9 NM	2.7 NM			
CATEGORY	A	B	C	D			
S-ILS 3	# 5528/24 200 (200-½)						
S-LOC 3	6220/40	892 (900-¾)	6220-2	892 (900-2)			
CIRCLING	6220-1¼	876 (900-1½)	6220-2½	876 (900-2½)	6220-2¾	876 (900-2¾)	
MAMUE FIX MINIMUMS							
S-LOC 3	5740/24	412 (400-½)	5740/40	412 (400-¾)			
CIRCLING	5740-1	456 (500-1)	5860-1½	456 (500-1)	5860-2¾	456 (500-2¾)	



NW-1, 14 MAY 2026 to 11 JUN 2026

NW-1, 14 MAY 2026 to 11 JUN 2026