

VOR/DME DDY 116.2 Chan 109	APP CRS 203°	Rwy Ldg 10165 TDZE 5330 Apt Elev 5344
--	------------------------	--

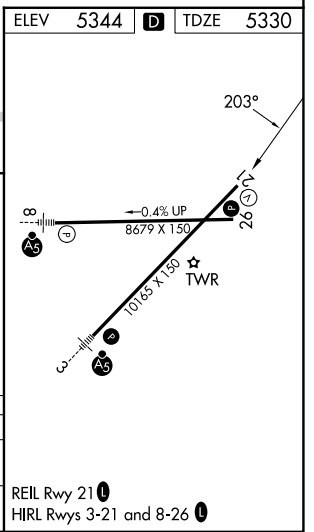
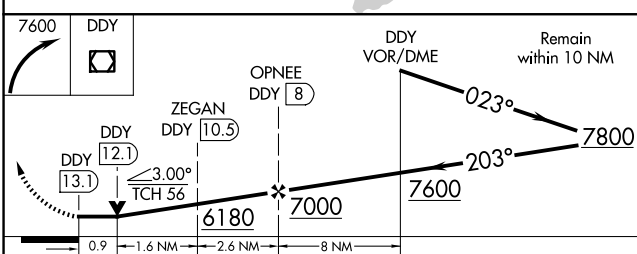
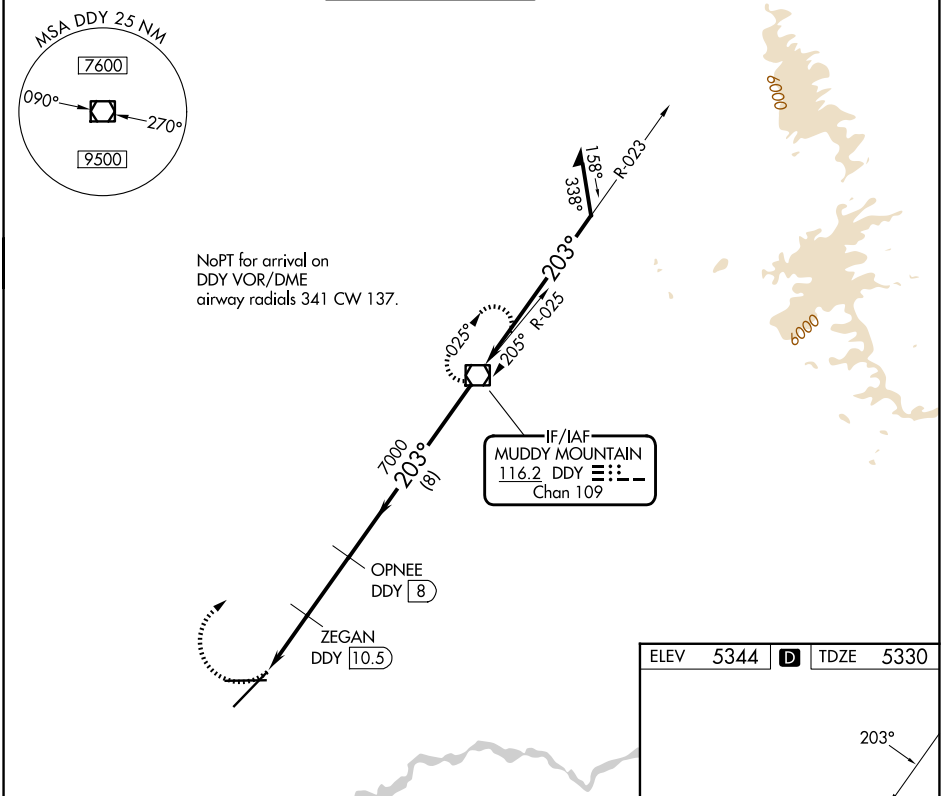
VOR/DME RWY 21

CASPER/NATRONA COUNTY INTL (CPR)

⚠ VDP NA with Douglas altimeter setting. When local altimeter setting not received, use Douglas altimeter setting and increase all MDAs 180 feet, increase S-21 visibility C/D ½ SM, Circling Cat C ½ SM and Cat D ¼ SM.

⚠ MISSED APPROACH: Climbing right turn to 7600 direct DDY VOR/DME and hold.

ATIS 126.15	CASPER APP CON * 120.65 354.1	CASPER TOWER * 118.3 (CTAF) 0 257.8	GND CON 121.9	CLNC DEL 121.9 257.8	UNICOM 122.95
-----------------------	---	---	-------------------------	--------------------------------	-------------------------



CATEGORY	A	B	C	D
S-21	5680-1 350 (400-1)			
CIRCLING	5740-1 396 (400-1)	5800-1 456 (500-1)	5860-1½ 516 (600-1½)	6200-2¾ 856 (900-2¾)

NW-1, 14 MAY 2026 to 11 JUN 2026

NW-1, 14 MAY 2026 to 11 JUN 2026