

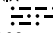
(PXR1.PXR) 25051

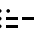
PHOENIX ONE DEPARTURE (OBSTACLE)

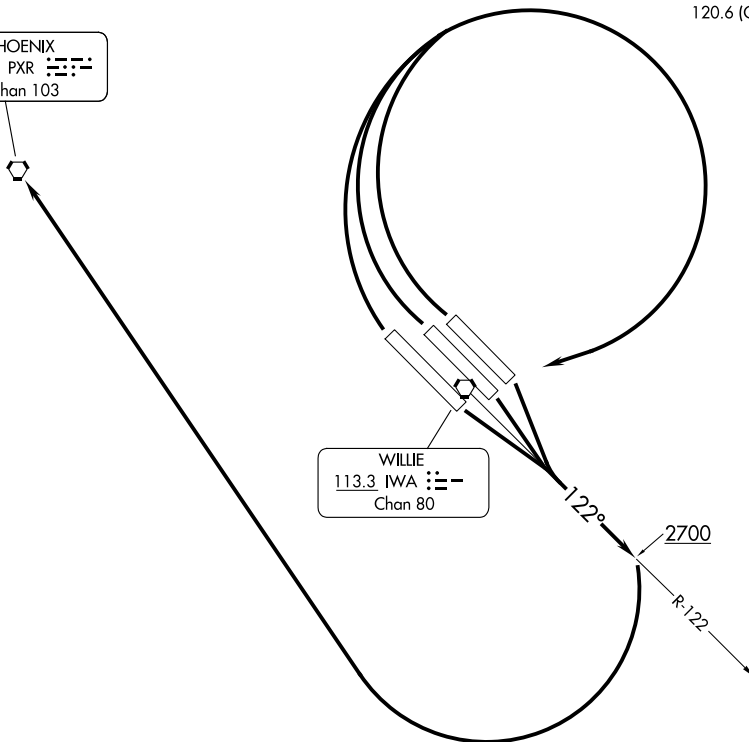
AL-74 (FAA)

MESA GATEWAY (IWA)
PHOENIX, ARIZONA

PHOENIX DEP CON
124.9 353.8
ATIS
133.5 270.275
CLNC DEL
135.05
GND CON
128.25 275.8
GATEWAY TOWER*
120.6 (CTAF) 289.4

PHOENIX
115.6 PXR 
Chan 103

WILLIE
113.3 IWA 
Chan 80



TAKEOFF MINIMUMS

Rwys 12L, 12C, 12R, 30L, 30C, 30R: Standard.

TAKEOFF OBSTACLE NOTES

Rwys 30L/C/R: Trees beginning 351' from DER, 351' left of centerline, up to 20' AGL/1359' MSL.
Trees beginning 689' from DER, 398' right of centerline, up to 20' AGL/1359' MSL.

NOTE: Chart not to scale.

DEPARTURE ROUTE DESCRIPTION

TAKEOFF RUNWAYS 12L/C/R: Climb to 2700 via IWA VORTAC R-122 then right turn direct PXR VORTAC.

TAKEOFF RUNWAYS 30L/C/R: Climbing right turn to 4000 direct IWA VORTAC and IWA VORTAC R-122 then right turn direct PXR VORTAC.

PHOENIX ONE DEPARTURE (OBSTACLE)

(PXR1.PXR) 11FEB10

PHOENIX, ARIZONA
MESA GATEWAY (IWA)

SW-4, 14 MAY 2026 to 11 JUN 2026

SW-4, 14 MAY 2026 to 11 JUN 2026