

WAAS CH <b>58200</b> <b>W12A</b>	APP CRS <b>123°</b>	Rwy Ldg <b>10201</b> TDZE <b>1359</b> Apt Elev <b>1384</b>
--	------------------------	--

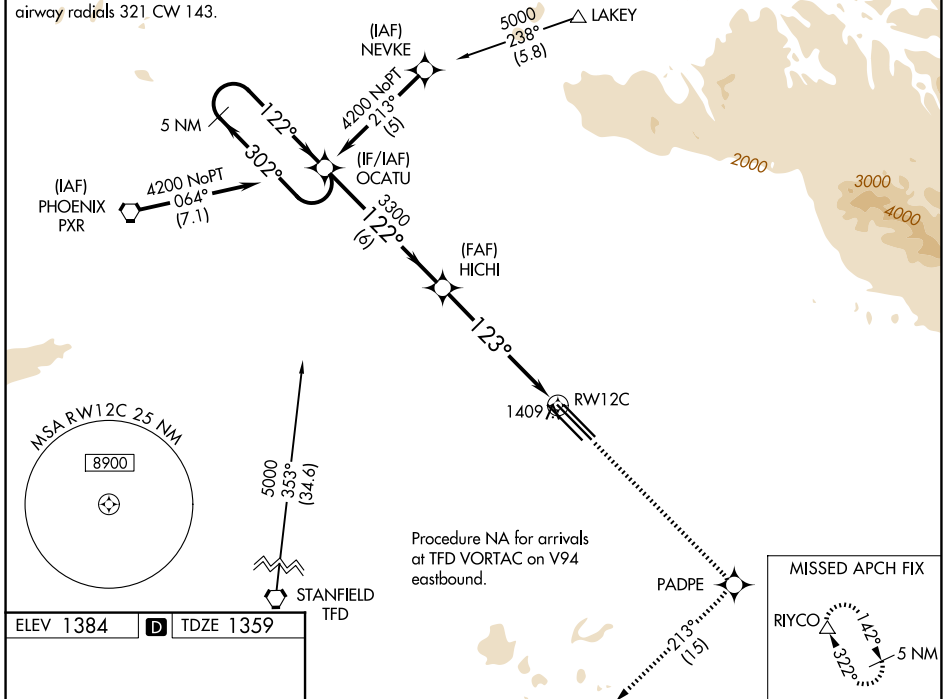
# RNAV (GPS) RWY 12C

MESA GATEWAY (IWA)

<p><b>⚠</b> DME/DME RNP-0.3 NA. For uncompensated Baro-VNAV systems LNAV/VNAV NA below -17°C (2°F) or above 46°C (115°F).</p>	<p>MISSED APPROACH: Climb to 5000 direct PADPE and on 213° track to RIYCO and hold.</p>
---	---

<p>ATIS <b>133.5 270.275</b></p>	<p>PHOENIX APP CON <b>124.9 353.8</b></p>	<p>GATEWAY TOWER * <b>120.6 (CTAF) 289.4</b></p>	<p>GND CON <b>128.25 275.8</b></p>
--------------------------------------	---	--	--

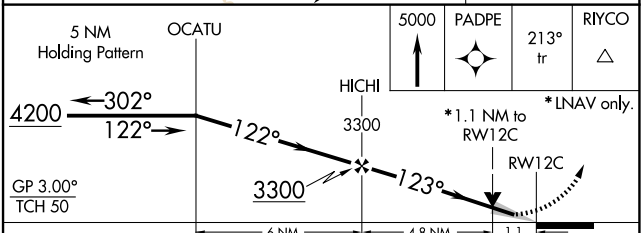
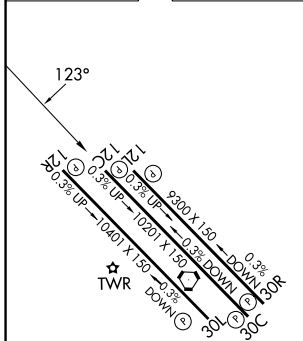
Procedure NA for arrivals on PXR VORTAC  
airway radials 321 CW 143.



SW-4, 14 MAY 2026 to 11 JUN 2026

SW-4, 14 MAY 2026 to 11 JUN 2026

ELEV 1384	<b>D</b>	TDZE 1359
-----------	----------	-----------



CATEGORY	A	B	C	D	E
LPV DA	1609-1 250 (300-1)				
LNAV/VNAV DA	1686-1¼ 327 (400-1¼)				
LNAV MDA	1740-1 381 (400-1)		1740-1¼ 381 (400-1¼)		
CIRCLING	1840-1¼	456 (500-1¼)	1880-1½ 496 (500-1½)	2000-2 616 (700-2)	2020-2¼ 636 (700-2¼)

MIRL Rwy 12R-30L  
HIRL Rwys 12L-30R and 12C-30C  
REIL Rwys 12L and 30R