

VORTAC IWA 113.3 Chan 80	APP CRS 302°	Rwy Ldg	30C	30R
		TDZE	10201	9301
			1380	1382
		Apt Elev	1384	1384

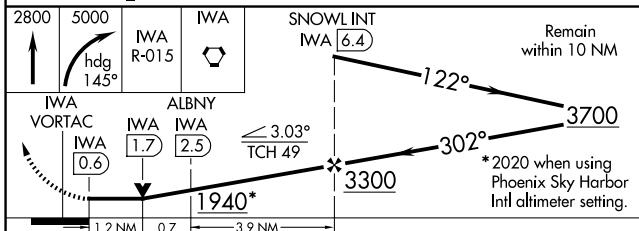
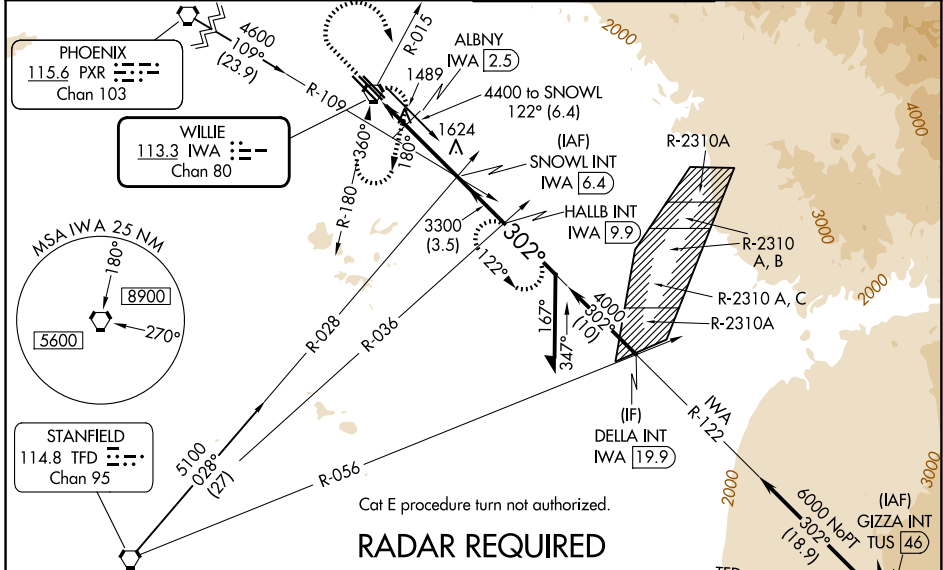
VOR or TACAN RWY 30C

MESA GATEWAY (IWA)

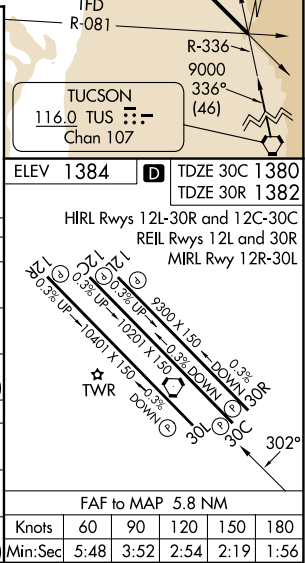
⚠ When local altimeter setting not received, use Phoenix Sky Harbor Intl altimeter setting and increase all MDA 80 feet, increase S-30C, SIDESTEP 30R, and Circling Cats C/D/E visibility ¼ SM.

⚠ MISSED APPROACH: Climb to 2800 then climbing right turn to 5000 via heading 145° and IWA VORTAC R-015 to IWA VORTAC and hold, continue climb-in-hold to 5000 (TACAN aircraft continue via IWA VORTAC R-122 to HALLB INT/IWA 9.9 DME and hold, continue climb-in-hold to 5000, hold SE, LT, 302° inbound).

ATIS 133.5 270.275	PHOENIX APP CON 124.9 353.8	GATEWAY TOWER* 120.6 (CTAF) 289.4	GND CON 128.25 275.8
------------------------------	---------------------------------------	---------------------------------------------	--------------------------------



CATEGORY	A		B		C	D	E
	S-30C	1940-1	560 (600-1)	1940-1½	560 (600-1½)	1940-1¾	560 (600-1¾)
SIDESTEP 30R	1940-1	558 (600-1)	1940-1½	558 (600-1½)	1940-2	558 (600-2)	560 (600-2)
CIRCLING	1940-1	556 (600-1)	1940-1½	556 (600-1½)	2000-2	616 (700-2)	2020-2¼
DME MINIMUMS							
S-30C	1800-1	420 (500-1)	1800-1¼	420 (500-1¼)	1800-1½	420 (500-1½)	1800-1½
SIDESTEP 30R	1800-1	418 (500-1)	1800-1½	418 (500-1½)	1800-2	418 (500-2)	418 (500-2)
CIRCLING	1880-1	496 (500-1)	1880-1½	496 (500-1½)	2000-2	616 (700-2)	2020-2¼



SW-4, 14 MAY 2026 to 11 JUN 2026

SW-4, 14 MAY 2026 to 11 JUN 2026