

CHANUTE, KANSAS

AL-75 (FAA)

25331

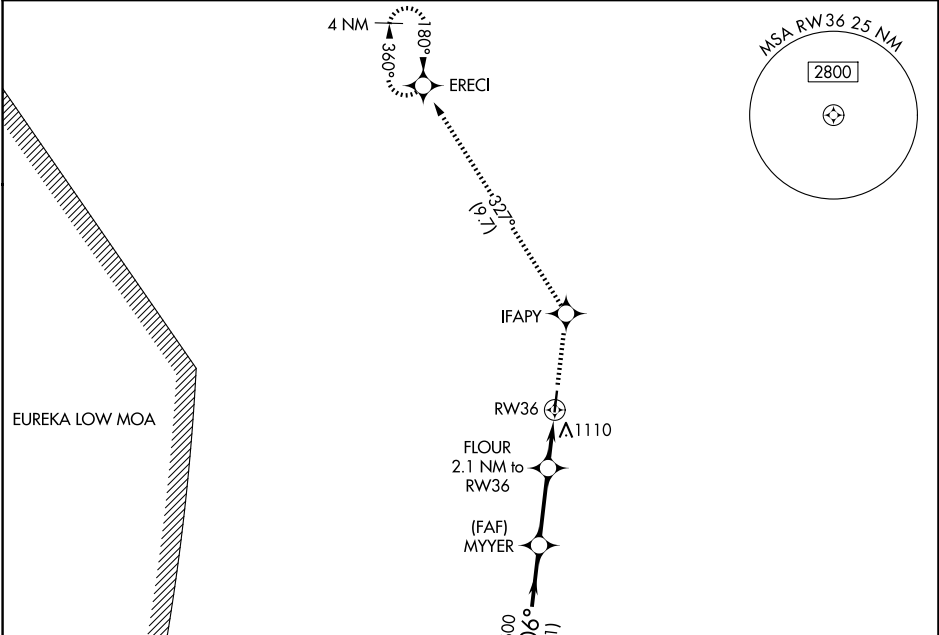
APP CRS	Rwy Ldg	3985
006°	TDZE	1001
	Apt Elev	1003

RNAV (GPS) RWY 36

CHANUTE MARTIN JOHNSON (CNU)

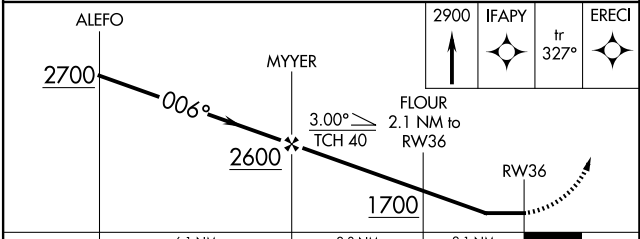
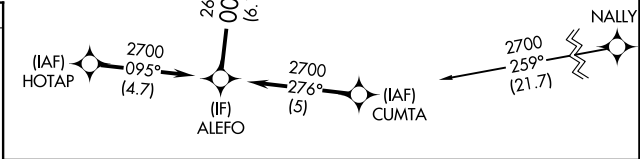
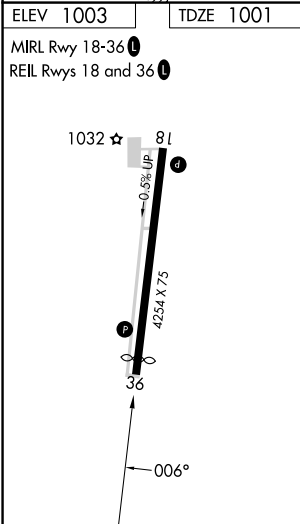
RNP APCH - GPS.	MISSED APPROACH: Climb to 2900 direct IFAPY and on track 327° to ERECI and hold.
Rwy 36 helicopter visibility reduction below 1 SM NA. Procedure NA at night.	

ASOS 127.075	KANSAS CITY CENTER 132.9 279.5	UNICOM 122.7 (CTAF) 0
------------------------	--	---------------------------------



NC-2, 14 MAY 2026 to 11 JUN 2026

NC-2, 14 MAY 2026 to 11 JUN 2026



CATEGORY	A	B	C	D
LNAV MDA	1400-1	399 (400-1)	NA	
CIRCLING	1480-1 477 (500-1)	1620-1 617 (700-1)	NA	

CHANUTE, KANSAS
Amdt 1 27NOV25

37°40'N-95°29'W

CHANUTE MARTIN JOHNSON (CNU)

RNAV (GPS) RWY 36