

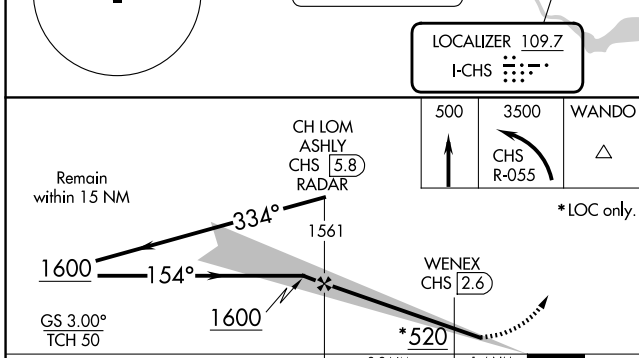
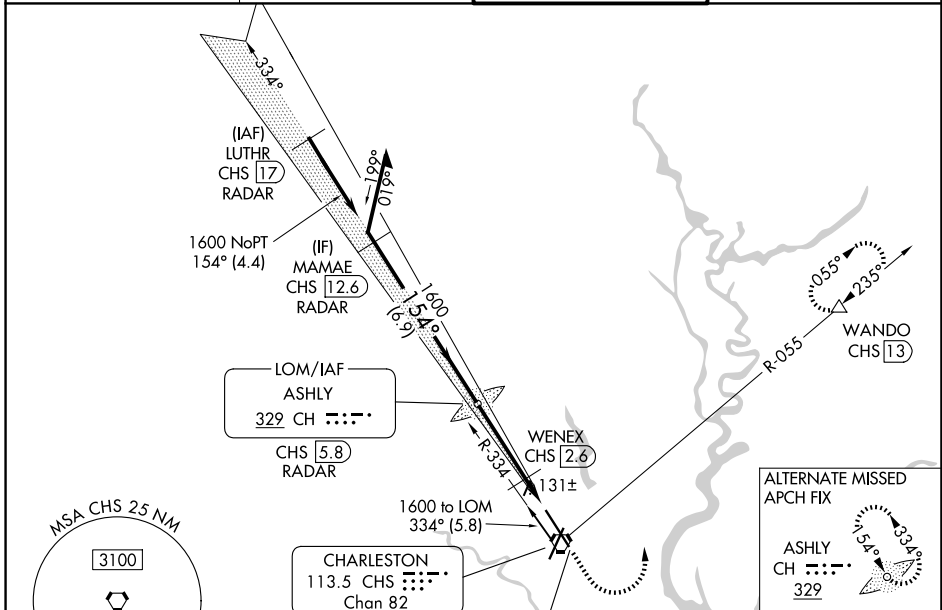
LOC I-CHS 109.7	APP CRS 154°	Rwy Ldg TDZE Apt Elev	9001 43 46
---------------------------	------------------------	-----------------------------	---------------------------------------

ILS or LOC RWY 15

CHARLESTON AFB/INTL (CHS)

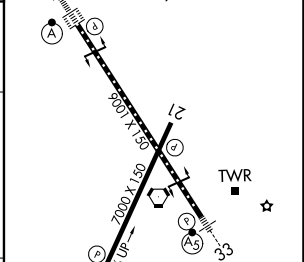
DME required.	ALSF-2	MISSED APPROACH: Climb to 500 then climbing left turn to 3500 on CHS VORTAC R-055 to WANDO/CHS VORTAC 13 DME and hold, continue climb-in-hold to 3500.
<p>⚠ For inop ALS, increase S-ILS 15 Cat E visibility to RVR 4000 and S-LOC 15 Cats C/D/E visibility to RVR 5500. DME from CHS VORTAC. Simultaneous reception of I-CHS and CHS DME required.</p>		

D-ATIS 124.75	CHARLESTON APP CON 120.7 306.925	CHARLESTON TOWER 126.0 239.0	GND CON 121.9 348.6
-------------------------	--	--	-------------------------------



ELEV 46	TDZE 43
154°	TDZL/RCLS Rwy 15
	REIL Rwy 3 and 21
	HIRL Rwy 3-21 and 15-33

CATEGORY	A	B	C	D	E
S-ILS 15	243/18		200 (200-½)		
S-LOC 15	400/24	357 (400-½)	400/30		357 (400-¾)
CIRCLING	540-1	494 (500-1)	540-1½	740-2¼	740-2½
			494 (500-1½)	694 (700-2¼)	694 (700-2½)



FAF to MAP 4.6 NM					
Knots	60	90	120	150	180
Min:Sec	4:36	3:04	2:18	1:50	1:32

SE-2, 14 MAY 2026 to 11 JUN 2026

SE-2, 14 MAY 2026 to 11 JUN 2026