

APP CRS	Rwy Ldg	7000
211°	TDZE	43
	Apt Elev	46

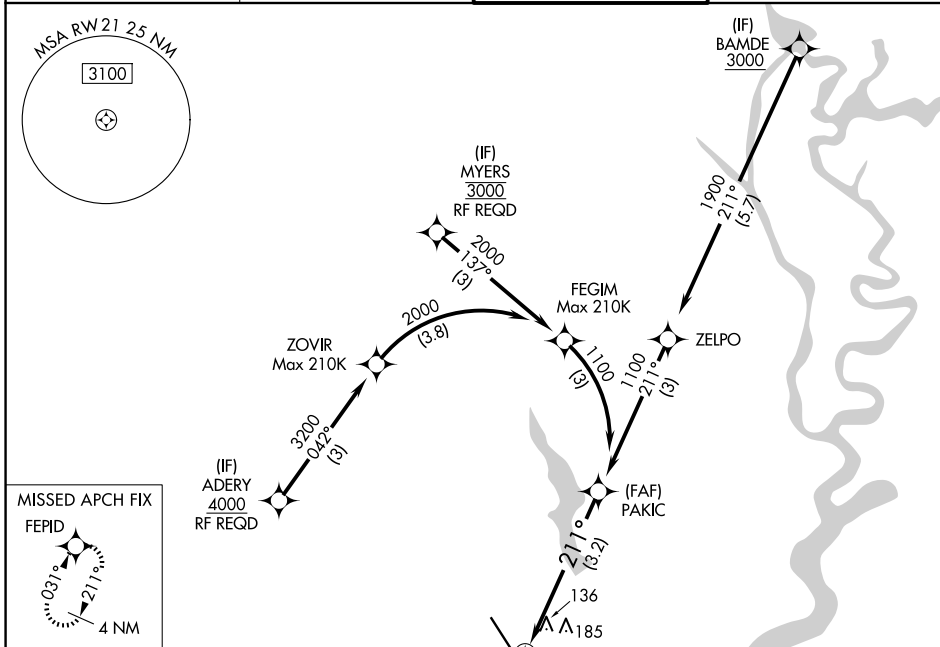
RNAV (RNP) Z RWY 21

CHARLESTON AFB/INTL (CHS)

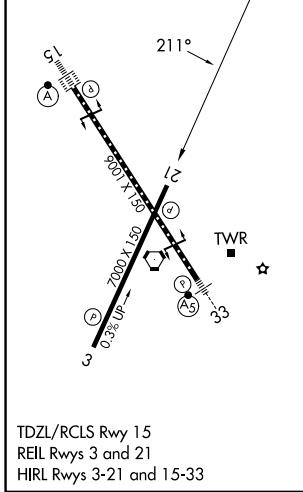
For uncompensated Baro-VNAV systems, procedure NA below -5°C (23°F) or above 54°C (130°F). GPS required.

MISSED APPROACH: Climb to 3000 on track 211° to FEPID and hold.

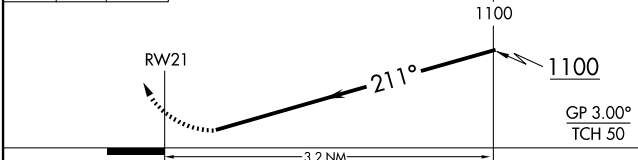
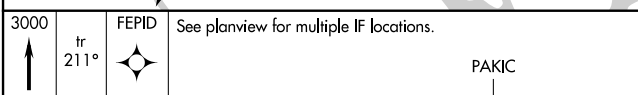
D-ATIS 124.75	CHARLESTON APP CON 120.7 306.925	CHARLESTON TOWER 126.0 239.0	GND CON 121.9 348.6
-------------------------	--	--	-------------------------------



ELEV 46	TDZE 43
---------	---------



TDZL/RCLS Rwy 15
REIL Rwys 3 and 21
HIRL Rwys 3-21 and 15-33



CATEGORY	A	B	C	D
RNP 0.21 DA		427-1½	384 (400-1½)	
RNP 0.30 DA		455-1¾	412 (500-1¾)	

AUTHORIZATION REQUIRED

SE-2, 14 MAY 2026 to 11 JUN 2026

SE-2, 14 MAY 2026 to 11 JUN 2026