

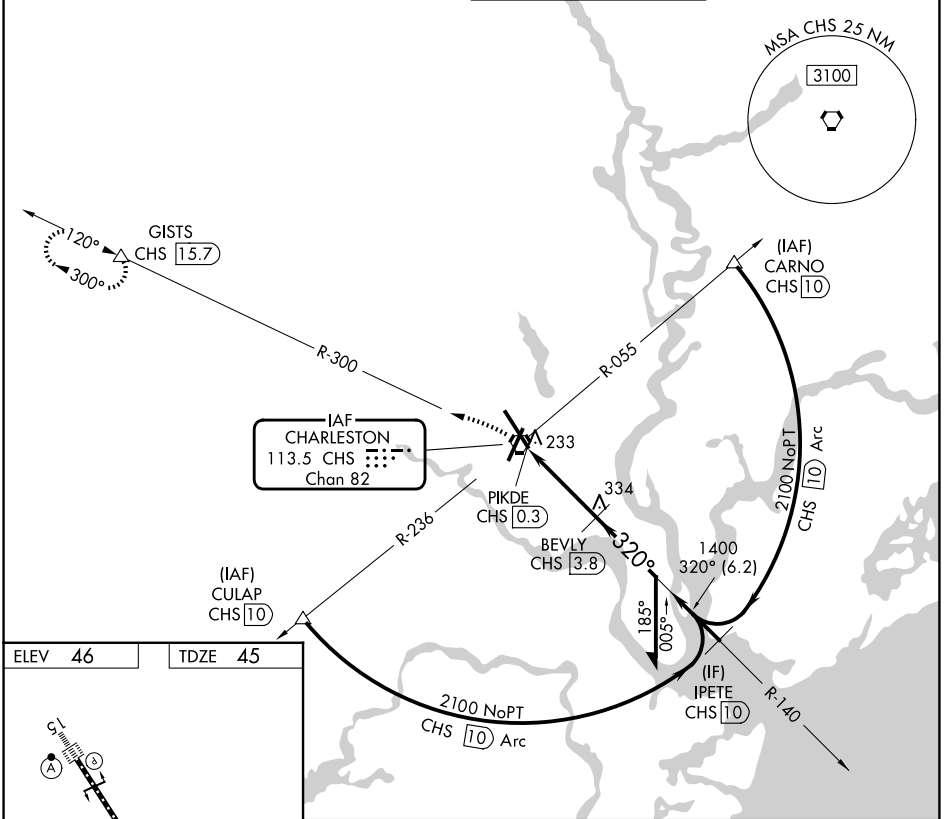
VORTAC CHS <b>113.5</b> Chan <b>82</b>	APP CRS <b>320°</b>	Rwy Ldg TDZE 45 Apt Elev 46	<b>9001</b>
--	------------------------	--------------------------------------	-------------

# VOR/DME or TACAN RWY 33

CHARLESTON AFB/INTL (CHS)

	MALSR	MISSED APPROACH: Climbing left turn to 2100 on CHS R-300 to GISTS/CHS 15.7 DME and hold.

D-ATIS <b>124.75</b>	CHARLESTON APP CON <b>120.7 306.925</b>	CHARLESTON TOWER <b>126.0 239.0</b>	GND CON <b>121.9 348.6</b>
-------------------------	--	--	-------------------------------



ELEV 46	TDZE 45
---------	---------

**TDZL/RCLS Rwy 15**  
**REIL Rwys 3 and 21**  
**HIRL Rwys 3-21 and 15-33**

2100 CHS R-300	GISTS	CHS VORTAC	PIKDE CHS 0.3	BEVLY CHS 3.8	2100
----------------	-------	------------	---------------	---------------	------

Remain within 10 NM  
 VGSI and descent angles not coincident (VGSI Angle 3.00/TCH 59).  
 140° heading, 320° heading, 1400, 3.52° TCH 50, 1.3 NM, 2.2 NM.

CATEGORY	A	B	C	D
S-33	500/24	455 (500-1/2)	500/45 455 (500-3/4)	NA
CIRCLING	540-1	494 (500-1)	540-1 1/2 494 (500-1 1/2)	740-2 1/4 694 (700-2 1/4)

# VOR/DME or TACAN RWY 33

SE-2, 14 MAY 2026 to 11 JUN 2026

SE-2, 14 MAY 2026 to 11 JUN 2026