

# AIRPORT DIAGRAM

AL-78 (FAA)

## CHARLOTTE/DOUGLAS INTL (CLT) CHARLOTTE, NORTH CAROLINA

D-ATIS ARR 121.15  
 DEP 132.1  
 CHARLOTTE TOWER  
 118.1 (RWY 18L-36R)  
 126.4 (RWY 18C-36C)  
 133.35 (RWY 01L-19R)  
 257.8

HIRL Rwy 18L-36R, 18C-36C and 01L-19R  
 REIL Rwy 18L  
 TDZL/RCLS Rwy 36R, 36C, 19R and 01L

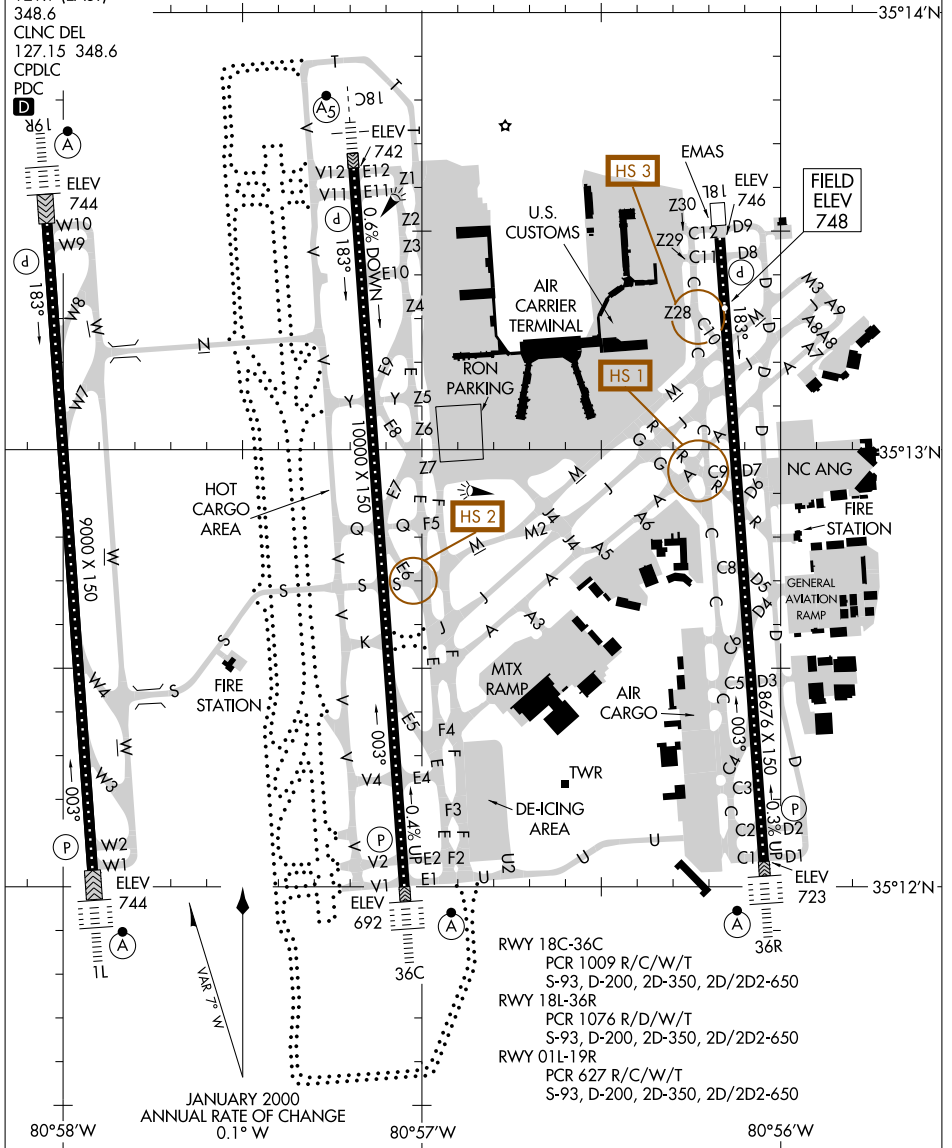
ASDE-X in use. Operate transponders  
 with altitude reporting mode and ADS-B  
 (if equipped) enabled on all airport surfaces.

Runway Status Lights in operation.

CAUTION: BE ALERT TO RUNWAY CROSSING CLEARANCES.  
 READBACK OF ALL RUNWAY HOLDING INSTRUCTIONS IS REQUIRED.

SE-2, 14 MAY 2026 to 11 JUN 2026

SE-2, 14 MAY 2026 to 11 JUN 2026



RWY 18C-36C  
 PCR 1009 R/C/W/T  
 S-93, D-200, 2D-350, 2D/2D2-650

RWY 18L-36R  
 PCR 1076 R/D/W/T  
 S-93, D-200, 2D-350, 2D/2D2-650

RWY 01L-19R  
 PCR 627 R/C/W/T  
 S-93, D-200, 2D-350, 2D/2D2-650

JANUARY 2000  
 ANNUAL RATE OF CHANGE  
 0.1° W

# AIRPORT DIAGRAM

## CHARLOTTE, NORTH CAROLINA CHARLOTTE/DOUGLAS INTL (CLT)