

CHARLOTTE FOUR DEPARTURE

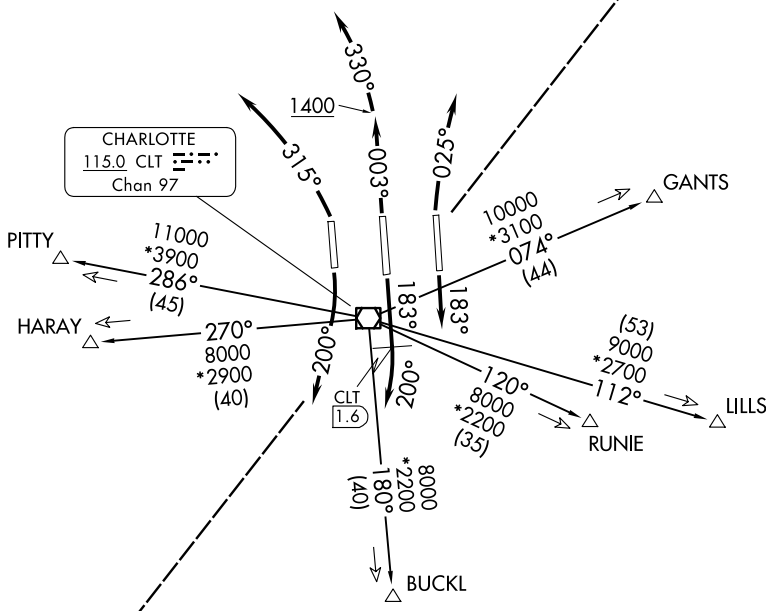
D-ATIS DEP
132.1
CLNC DEL
127.15 348.6
CPDLC
GND CON
121.8 348.6 (W)
121.9 348.6 (E)
CHARLOTTE TOWER
118.1 257.8 (18L-36R)
126.4 257.8 (18C-36C)
133.35 257.8 (1L-19R)

RADAR and DME required.

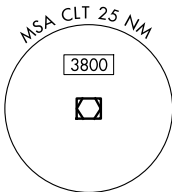
**TOP ALTITUDE:
8000**

NOTE: Turbojets only requesting at or below 10000' only.
NOTE: Accelerate to 250K, if unable, advise ATC.
NOTE: Transponder code will be issued via PDC or Charlotte Clearance Delivery.
NOTE: If unable to accept climb rate, advise ATC on initial contact.

CHARLOTTE DEP CON
120.5 257.2 (HARAY, PITY)
Transition. 1L, 36C



TAKEOFF MINIMUMS:
Rwys 18L/C, 19R, 36C/R: Standard.
Rwy 1L: Standard with minimum climb of 231'/NM to 3600.



NOTE: Chart not to scale.

(CONTINUED ON FOLLOWING PAGE)

SE-2, 14 MAY 2026 to 11 JUN 2026

SE-2, 14 MAY 2026 to 11 JUN 2026

CHARLOTTE FOUR DEPARTURE

CHARLOTTE FOUR DEPARTURE



DEPARTURE ROUTE DESCRIPTION

TAKEOFF RUNWAY 1L: Climbing left turn heading 315°, thence. . .

TAKEOFF RUNWAY 18L: Climb on heading 183°, thence. . .

TAKEOFF RUNWAY 18C: Climb on heading 183° until passing CLT VOR/DME 1.6 DME, then turn right heading 200°, thence. . .

TAKEOFF RUNWAY 19R: Climbing right turn heading 200°, thence. . .

TAKEOFF RUNWAY 36C: Climb on heading 003° to 1400 then left turn heading 330°, thence. . .

TAKEOFF RUNWAY 36R: Climbing right turn heading 025°, thence. . .

. . . on RADAR vectors to intercept filed/assigned transition or enroute fix/navaid. Maintain 8000. Expect filed altitude 10 minutes after departure.

BUCKL TRANSITION (CLT4.BUCKL): From over CLT VOR/DME to BUCKL.

GANTS TRANSITION (CLT4.GANTS): From over CLT VOR/DME to GANTS.

HARAY TRANSITION (CLT4.HARAY): From over CLT VOR/DME to HARAY.

LILLS TRANSITION (CLT4.LILLS): From over CLT VOR/DME to LILLS.

PITTY TRANSITION (CLT4.PITTY): From over CLT VOR/DME to PITTY.

RUNIE TRANSITION (CLT4.RUNIE): From over CLT VOR/DME to RUNIE.

SE-2, 14 MAY 2026 to 11 JUN 2026

SE-2, 14 MAY 2026 to 11 JUN 2026