

RNAV 1 - DME/DME/IRU or GPS.
RADAR required.

CHARLOTTE APP CON
125.35 257.2
D-ATIS ARR
121.15

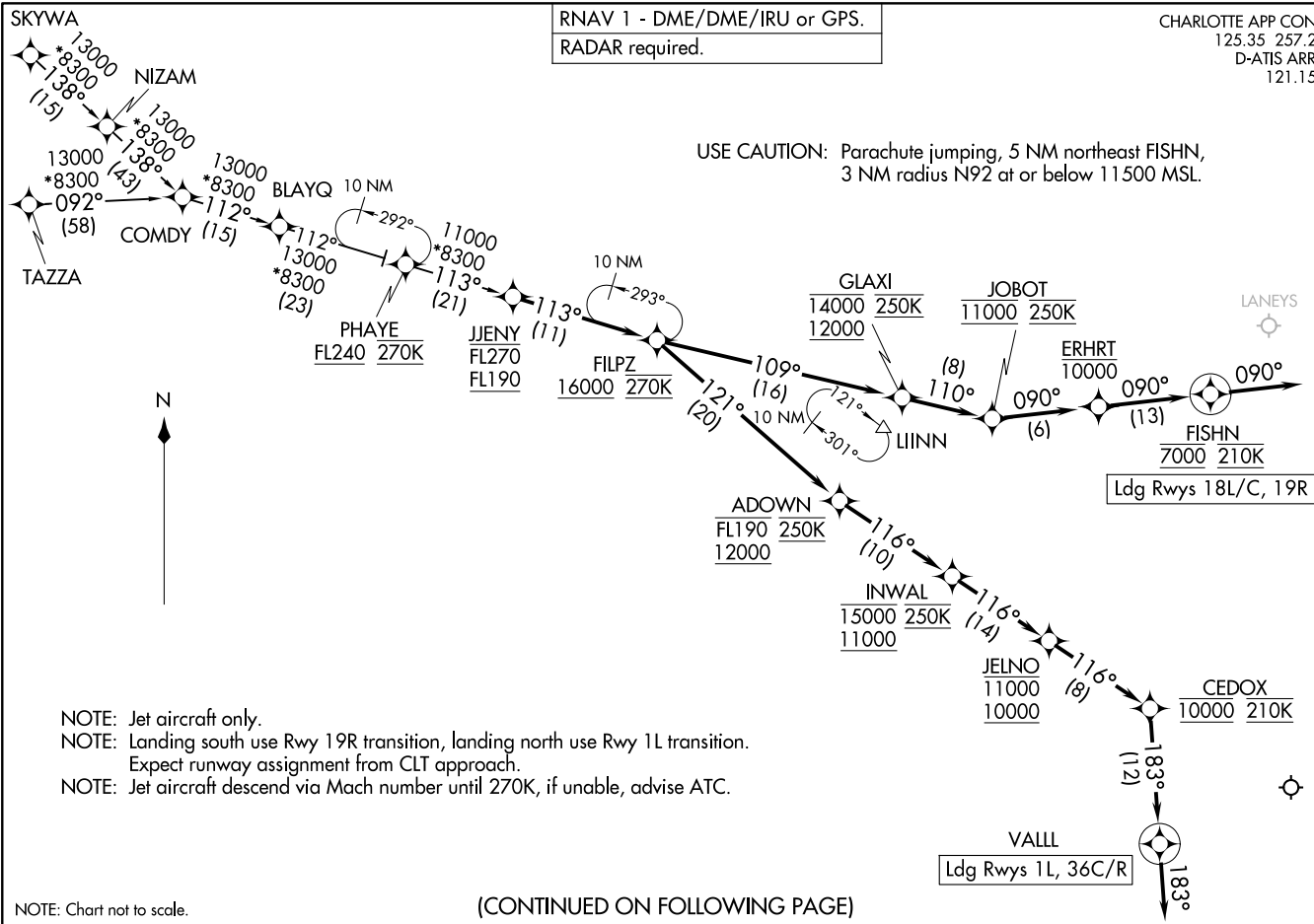
FLIPZ FIVE ARRIVAL (RNAV)
(JENY.FILPZ5) 14MAY26

(JENY.FILPZ5) 26134
FLIPZ FIVE ARRIVAL (RNAV)

AL-78 (FAA)

CHARLOTTE/DOUGLAS INTL (CLT)
CHARLOTTE, NORTH CAROLINA

USE CAUTION: Parachute jumping, 5 NM northeast FISHN,
3 NM radius N92 at or below 11 500 MSL.



- NOTE: Jet aircraft only.
- NOTE: Landing south use Rwy 19R transition, landing north use Rwy 1L transition. Expect runway assignment from CLT approach.
- NOTE: Jet aircraft descend via Mach number until 270K, if unable, advise ATC.

Ldg Rwys 18L/C, 19R

Ldg Rwys 1L, 36C/R

(CONTINUED ON FOLLOWING PAGE)

NOTE: Chart not to scale.

CHARLOTTE/DOUGLAS INTL (CLT)
CHARLOTTE, NORTH CAROLINA

FILPZ FIVE ARRIVAL (RNAV)

ARRIVAL ROUTE DESCRIPTION

COMDY TRANSITION (COMDY.FILPZ5)

SKYWA TRANSITION (SKYWA.FILPZ5)

TAZZA TRANSITION (TAZZA.FILPZ5)

From JJENY on track 113° to cross FILPZ at or above 16000 and at 270K.

LANDING RUNWAYS 1L, 36C/R: From FILPZ on track 121° to cross ADOWN between 12000 and FL190 and at 250K, then on track 116° to cross INWAL between 11000 and 15000 and at 250K, then on track 116° to cross JELNO between 10000 and 11000, then on track 116° to cross CEDOX at 10000 and at 210K, then on track 183° to VALL, then on track 183°. Expect RADAR vectors to final approach course.

LANDING RUNWAYS 18L/C, 19R: From FILPZ on track 109° to cross GLAXI between 12000 and 14000 and at 250K, then on track 110° to cross JOBOT at 11000 and at 250K, then on track 090° to cross ERHRT at or below 10000, then on track 090° to cross FISHN at 7000 and at 210K, then on track 090°. Expect RADAR vectors to final approach course.

SE-2, 14 MAY 2026 to 11 JUN 2026

SE-2, 14 MAY 2026 to 11 JUN 2026