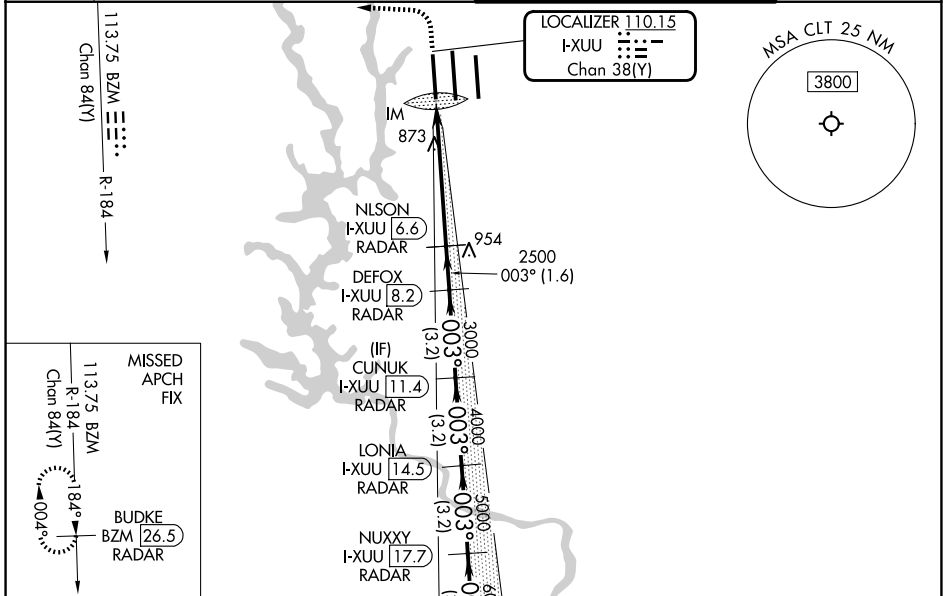


LOC/DME I-XUU 110.15 Chan 38(Y)	APP CRS 003°	Rwy Ldg TDZE 744 Apt Elev 748	9000 744 748
--	------------------------	---	---

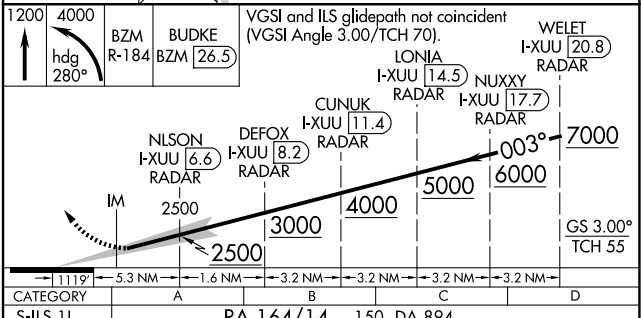
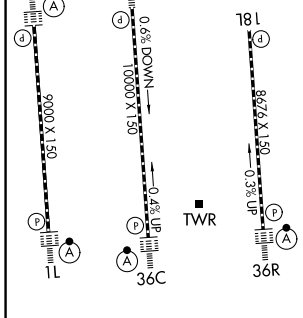
ILS RWY 1L (SA CAT I)
CHARLOTTE/DOUGLAS INTL (CLT)

DME or RADAR required. RADAR required for procedure entry.	ALSF-2	MISSED APPROACH: Climb to 1200 then climbing left turn to 4000 on heading 280° and on BZM VOR/DME R-184 to BUDKE/BZM 26.5 DME/RADAR and hold.
Simultaneous approach authorized. Requires specific OPSPEC, MSPEC, or LOA approval.		

D-ATIS	CHARLOTTE APP CON		CHARLOTTE TOWER		GND CON
121.15	128.325 (001°-119°)	257.2 (180°-359°)	118.1	257.8 (18L-36R)	121.8 348.6 (W)
	120.05 (120°-295°)	307.8 (360°-179°)	126.4	257.8 (18C-36C)	121.9 348.6 (E)
	134.75 (296°-360°)		133.35	257.8 (1L-19R)	



ELEV 748	D	TDZE 744
----------	----------	----------



HIRL all Rwys
REIL Rwy 18L
TDZL/RCLS Rwys 1L, 19R, 36C and 36R

1200	4000	BZM R-184	BUDKE BZM [26.5]	VGSI and ILS glidepath not coincident (VGSI Angle 3.00/TCH 70).	WELET I-XUU [20.8] RADAR
↑	hdg 280°				LONIA I-XUU [14.5] RADAR
					NUXXY I-XUU [17.7] RADAR
					CUNUK I-XUU [11.4] RADAR
					NLSON I-XUU [6.6] RADAR
					DEFOX I-XUU [8.2] RADAR
					IM
					2500
					3000
					4000
					5000
					6000
					7000
					GS 3.00° TCH 55
					003°
					111°
					5.3 NM
					1.6 NM
					3.2 NM
					3.2 NM
					3.2 NM
					3.2 NM
CATEGORY	A	B	C	D	
S-ILS 1L	RA 164/14		150	DA 894	

SA CATEGORY I ILS SPECIAL AIRCREW & AIRCRAFT CERTIFICATION REQUIRED

SE-2, 14 MAY 2026 to 11 JUN 2026

SE-2, 14 MAY 2026 to 11 JUN 2026