

LOC/DME I-PEP 111.3 Chan 50	APP CRS 183°	Rwy Ldg 10000 TDZE 742 Apt Elev 748
--	------------------------	--

ILS or LOC RWY 18C

CHARLOTTE/DOUGLAS INTL (CLT)

RADAR required for procedure entry. DME or RADAR required

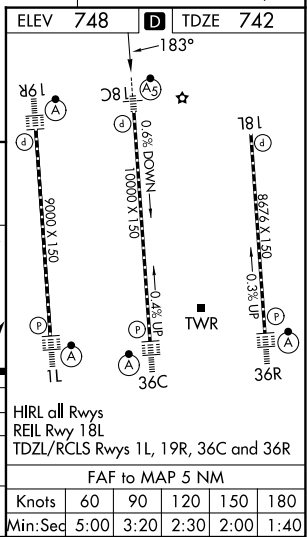
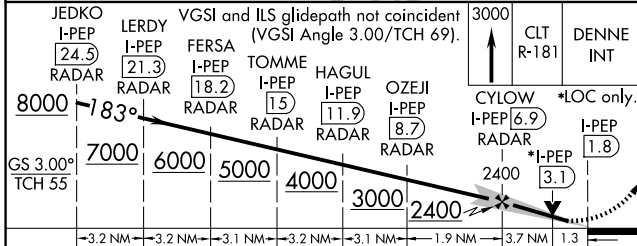
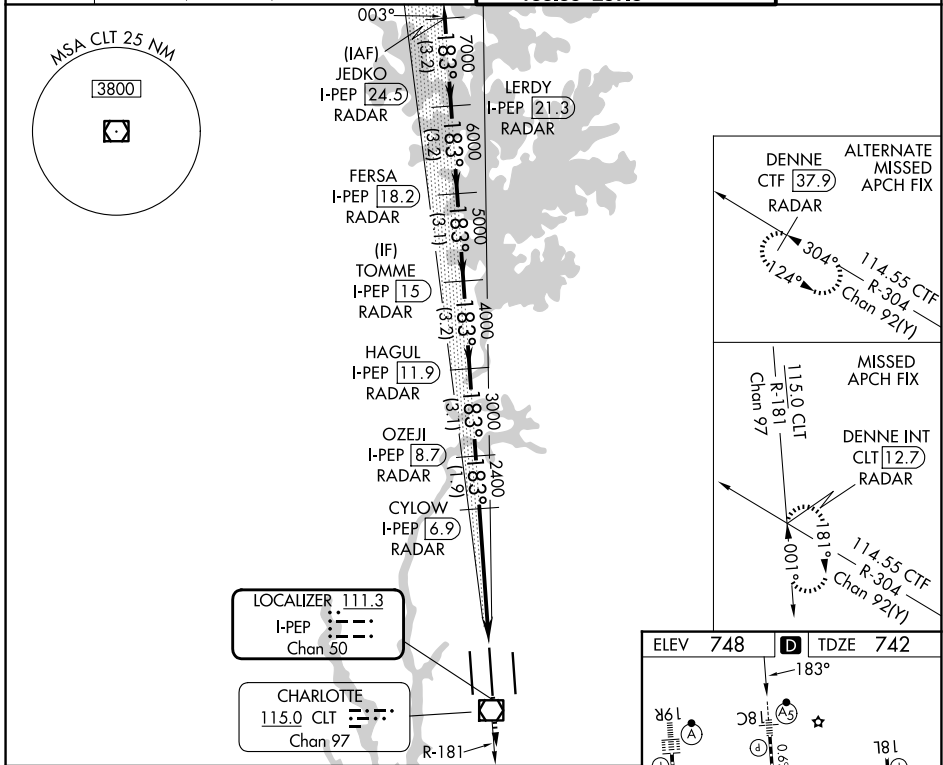
⚠ Circling NA at night. Simultaneous approach authorized. For inop ALS, increase S-LOC 18C Cat C/D visibility to 1/8 SM.

** RVR 1800 authorized with the use of FD or AP or HUD to DA

MALSR

MISSED APPROACH: Climb to 3000 on CLT VOR/DME R-181 to DENNE INT/CLT 12.7 DME/RADAR and hold.

D-ATIS 121.15	CHARLOTTE APP CON 128.325 (001°-119°) 120.05 (120°-295°) 134.75 (296°-360°)	257.2 (180°-359°) 307.8 (360°-179°)	CHARLOTTE TOWER 118.1 257.8 (18L-36R) 126.4 257.8 (18C-36C) 133.35 257.8 (1L-19R)	GND CON 121.8 348.6 (W) 121.9 348.6 (E)
-------------------------	---	--	--	---



CATEGORY	A	B	C	D
S-ILS 18C **	942/24 200 (200-1/2)			
S-LOC 18C	1220/24 478 (500-1/2)		1220/50 478 (500-1)	
CIRCLING	1380-1 632 (700-1)		1500-2 1/4 752 (800-2 1/4)	1500-2 1/2 752 (800-2 1/2)

SE-2, 14 MAY 2026 to 11 JUN 2026

SE-2, 14 MAY 2026 to 11 JUN 2026