

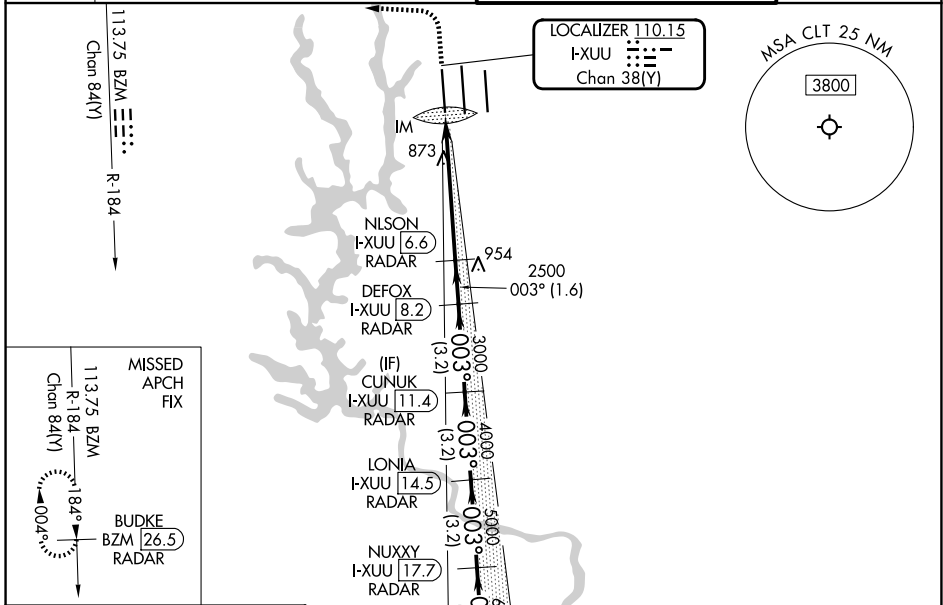
LOC/DME I-XUU <b>110.15</b> Chan 38(Y)	APP CRS <b>003°</b>	Rwy Ldg TDZE Apt Elev	<b>9000</b> <b>744</b> <b>748</b>
--	------------------------	-----------------------------	---

# ILS or LOC RWY 1L

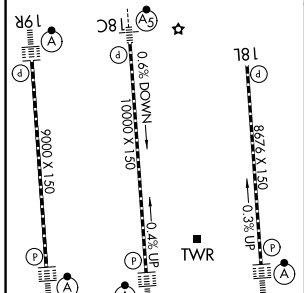
CHARLOTTE/DOUGLAS INTL (CLT)

DME or RADAR required. RADAR required for procedure entry.	ALSF-2 	MISSED APPROACH: Climb to 1200 then climbing left turn to 4000 on heading 280° and on BZM VOR/DME R-184 to BUDKE/BZM 26.5 DME/RADAR and hold.
Simultaneous approach authorized. Circling NA at night.		

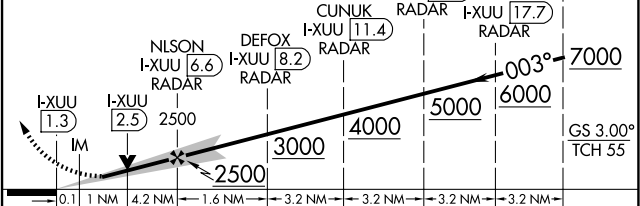
D-ATIS <b>121.15</b>	CHARLOTTE APP CON <b>128.325</b> (001°-119°) <b>120.05</b> (120°-295°) <b>134.75</b> (296°-360°)	<b>257.2</b> (180°-359°) <b>307.8</b> (360°-179°)	CHARLOTTE TOWER <b>118.1</b> <b>257.8</b> (18L-36R) <b>126.4</b> <b>257.8</b> (18C-36C) <b>133.35</b> <b>257.8</b> (1L-19R)	GND CON <b>121.8</b> <b>348.6</b> (W) <b>121.9</b> <b>348.6</b> (E)
-------------------------	---	--	--	---



ELEV 748	<b>D</b>	TDZE 744
HIRL all Rwys REIL Rwy 18L TDZL/RCLS Rwys 1L, 19R, 36C and 36R		



1200	4000	BZM R-184	BUDKE BZM 26.5	VGSi and ILS glidepath not coincident (VGSi Angle 3.00/TCH 70).	WELET I-XUU 20.8 RADAR
------	------	-----------	----------------	---	------------------------



FAF to MAP 5.3 NM					
Knots	60	90	120	150	180
Min:Sec	5:18	3:32	2:39	2:07	1:46
CATEGORY	A		B		D
S-ILS 1L	944/18 200 (200-½)				
S-LOC 1L	1180/24	436 (500-½)	1180/40	436 (500-¾)	
CIRCLING	1380-1	632 (700-1)	1500-2¼ 752 (800-2¼)	1500-2½ 752 (800-2½)	

SE-2, 14 MAY 2026 to 11 JUN 2026

SE-2, 14 MAY 2026 to 11 JUN 2026