

LOC I-DQG 111.7	APP CRS 003°	Rwy Ldg 10000 TDZE 707 Apt Elev 748
---------------------------	------------------------	--

ILS or LOC RWY 36C

CHARLOTTE/DOUGLAS INTL (CLT)

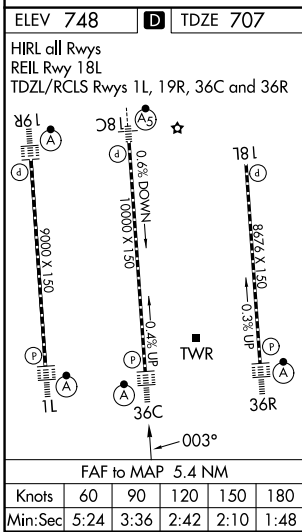
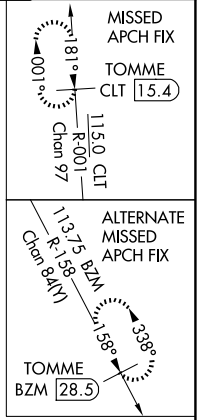
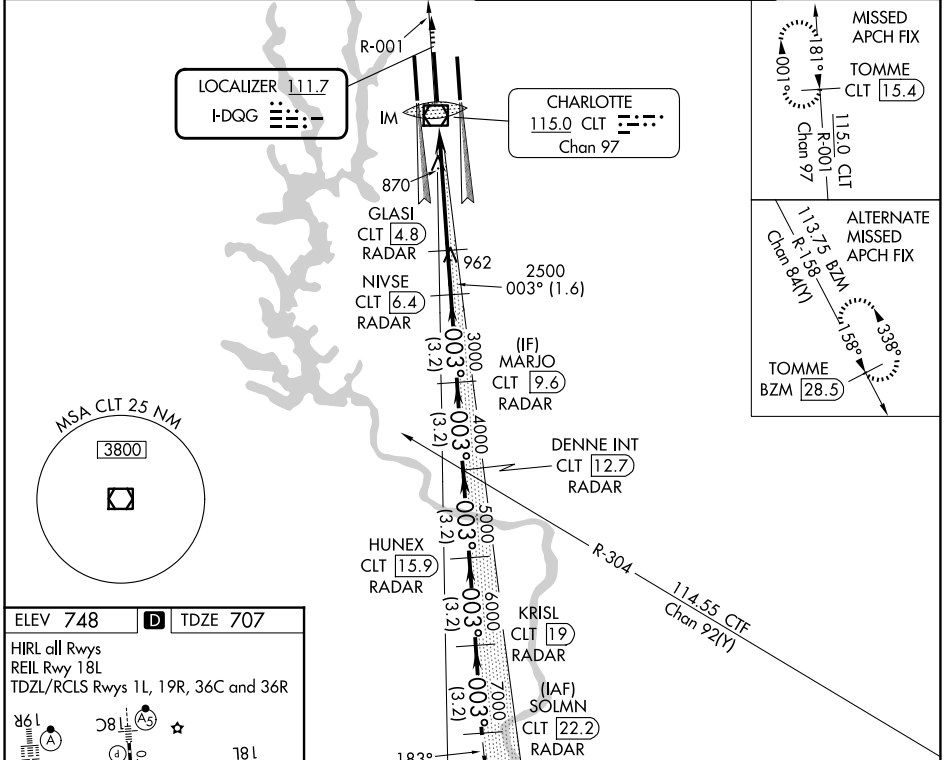
RADAR required for procedure entry. DME or RADAR required.

⚠ Circling NA at night. Simultaneous approach authorized. DQG ILS LLZ Rwy 36C unusable for rollout guidance.

ALSF-2
A

MISSED APPROACH: Climb to 3000 on CLT VOR/DME R-001 to TOMME/CLT 15.4 DME and hold.

D-ATIS 121.15	CHARLOTTE APP CON		CHARLOTTE TOWER		GND CON
	128.325 (001°-119°)	257.2 (180°-359°)	118.1 257.8 (18L-36R)		121.8 348.6 (W)
	120.05 (120°-295°)	307.8 (360°-179°)	126.4 257.8 (18C-36C)		121.9 348.6 (E)
	134.75 (296°-360°)		133.35 257.8 (1L-19R)		



3000	CLT R-001	TOMME CLT 15.4	VGSi and ILS glidepath not coincident (VGSi Angle 3.00/TCH 72).				SOLMNM CLT 22.2
	GLASI CLT 4.8	NIVSE CLT 6.4	MARJO CLT 9.6	DENNE INT CLT 12.7	HUNEX CLT 15.9	KRISL CLT 19	
	IM	2500	3000	4000	5000	6000	
	0.2	0.5	1.6	3.2	3.2	3.2	
003°						8000	
						GS 3.00°	
						TCH 57	
CATEGORY	A		B		C		
S-ILS 36C	907/18		200 (200-1/2)				
S-LOC 36C	1120/24		413 (400-1/2)				
CIRCLING	1380-1 632 (700-1)		1500-2 1/4 752 (800-2 1/4)		1500-2 1/2 752 (800-2 1/2)		

SE-2, 14 MAY 2026 to 11 JUN 2026

SE-2, 14 MAY 2026 to 11 JUN 2026