

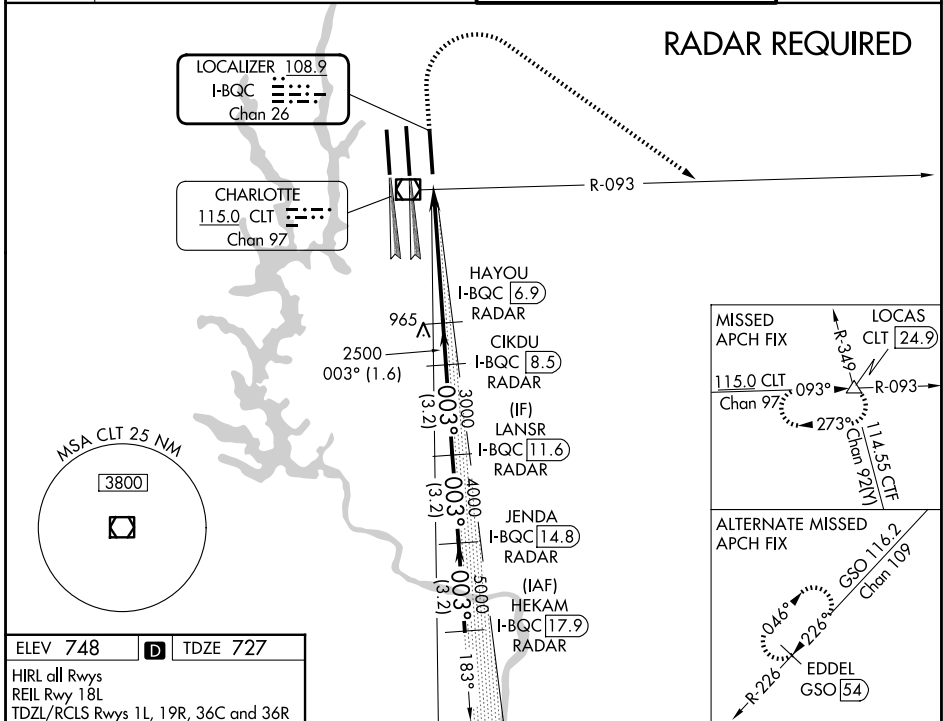
LOC/DME I-BQC 108.9 Chan 26	APP CRS 003°	Rwy Ldg 8390 TDZE 727 Apt Elev 748
--	------------------------	---

ILS or LOC RWY 36R

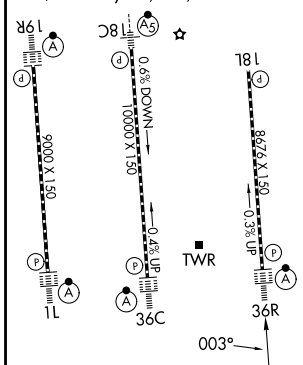
CHARLOTTE/DOUGLAS INTL (CLT)

Circling NA at night. Simultaneous approach authorized. DME or RADAR required.	ALSF-2 	MISSED APPROACH: Climb to 1320 then climbing right turn to 4000 on CLT VOR/DME R-093 to LOCAS INT/24.9 DME and hold.
--	------------	--

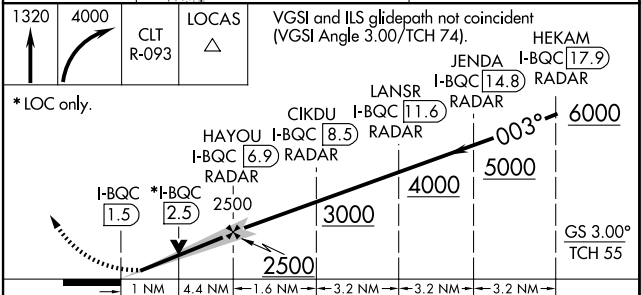
D-ATIS	CHARLOTTE APP CON		CHARLOTTE TOWER		GND CON
121.15	128.325 (001°-119°)	257.2 (180°-359°)	118.1 257.8 (18L-36R)	121.8 348.6 (W)	
	120.05 (120°-295°)	307.8 (360°-179°)	126.4 257.8 (18C-36C)	121.9 348.6 (E)	
	134.75 (296°-360°)		133.35 257.8 (1L-19R)		



ELEV 748	D	TDZE 727
HIRL all Rwys		
REIL Rwy 18L		
TDZL/RCLS Rwys 1L, 19R, 36C and 36R		



FAF to MAP 5.4 NM					
Knots	60	90	120	150	180
Min:Sec	5:24	3:36	2:42	2:10	1:48



CATEGORY	A	B	C	D
S-ILS 36R	927/18 200 (200-½)			
S-LOC 36R	1120/24	393 (400-½)	1120/35	393 (400-¾)
CIRCLING	1380-1 632 (700-1)		1500-2¼ 752 (800-2¼)	
			1500-2½ 752 (800-2½)	

SE-2, 14 MAY 2026 to 11 JUN 2026

SE-2, 14 MAY 2026 to 11 JUN 2026