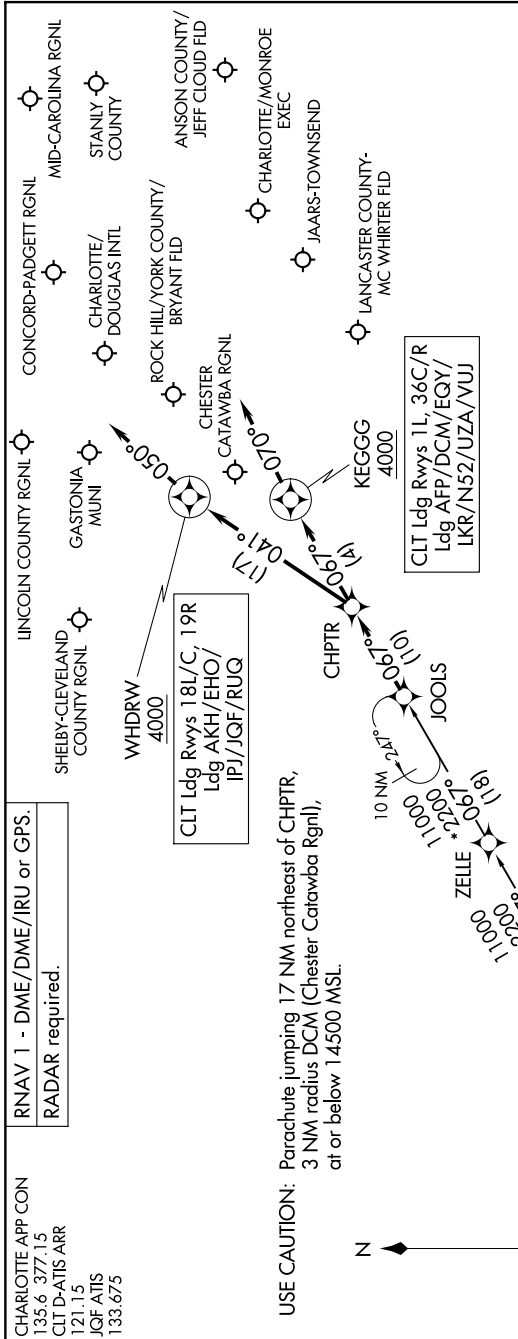


JOOLS TWO ARRIVAL (RNAV)

SE-2, 14 MAY 2026 to 11 JUN 2026



ARRIVAL ROUTE DESCRIPTION

THRSR TRANSITION (THRSR.JOOLS2)
WANSA TRANSITION (WANSA.JOOLS2)

CLT: From JOOLS on track 067° to CHPTPR.
LANDING RUNWAYS 1L, 36C/R: From CHPTPR on track 067° to cross KEGGG at or above 4000, then on track 070°. Expect RADAR vectors to final approach course.
LANDING RUNWAYS 18L/C, 19R: From CHPTPR on track 041° to cross WHDRW at or above 4000, then on track 050°. Expect RADAR vectors to final approach course.
LANDING DCM/EQY/UZA/AFP/N52/VUJ/LKR: From JOOLS on track 067° to CHPTPR, then on track 067° to cross KEGGG at or above 4000, then on track 070°. Expect RADAR vectors to final approach course.
LANDING AKH/RUG/EHO/JQF/IPJ: From JOOLS on track 067° to CHPTPR, then on track 041° to cross WHDRW at or above 4000, then on track 050°. Expect RADAR vectors to final approach course.

SE-2, 14 MAY 2026 to 11 JUN 2026

JOOLS TWO ARRIVAL (RNAV)

NOTE: Chart not to scale.