

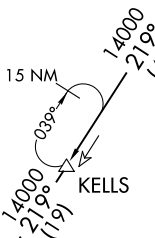
MAJIC FOUR ARRIVAL

CHARLOTTE, NORTH CAROLINA

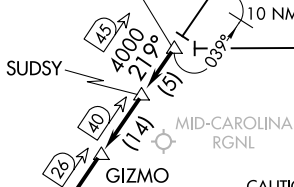
CHARLOTTE APP CON
126.15 282.325
CLT D-ATIS ARR
121.15

MAYOS
TURBOJET VERTICAL NAVIGATION
PLANNING INFORMATION
Expect FL220

MAJIC
TURBOJET VERTICAL NAVIGATION
PLANNING INFORMATION
Expect 13000 250K



LYNCHBURG
109.2 LYH
Chan 29



RALEIGH/DURHAM
117.2 RDU
Chan 119

LIBERTY
113.0 LIB
Chan 77

- LINCOLN COUNTY RGNL
- SHELBY-CLEVELAND COUNTY RGNL
- GASTONIA MUNI
- ROCK HILL/YORK COUNTY/BRYANT FLD
- CHESTER CATAWBA RGNL
- CHARLOTTE/DOUGLAS INTL
- CHARLOTTE/MONROE EXEC
- JAARS-TOWNSEND
- LANCASTER COUNTY-MC WHIRTER FLD

CAUTION: Parachute jumping 6 NM south-southwest of SUDSY, 5 NM radius of (KRUG) Mid-Carolina Rgnl, at or below 14500 MSL.

NOTE: DME required.
NOTE: RADAR required for LIB R-273.
NOTE: Landing other than Charlotte/Douglas Intl; expect RADAR vectors to destination airport or final approach course prior to CLT 10 DME fix.

NOTE: Chart not to scale.

ARRIVAL ROUTE DESCRIPTION

LIBERTY TRANSITION (LIB.MAJIC4): From over LIB VORTAC on LIB R-273 to MAJIC INT. Thence. . . .

LYNCHBURG TRANSITION (LYH.MAJIC4): From over LYH VOR/DME on LYH R-219 and CLT R-039 to MAJIC INT. Thence. . . .

. . . .From over MAJIC on CLT R-039 to:

LANDING NORTH: CLT VOR/DME. Expect RADAR vectors to final approach course prior to the CLT 5 DME fix.

LANDING SOUTH: GIZMO. Expect RADAR vectors to final approach course.

MAJIC FOUR ARRIVAL

CHARLOTTE, NORTH CAROLINA

SE-2, 14 MAY 2026 to 11 JUN 2026

SE-2, 14 MAY 2026 to 11 JUN 2026