

# MILLET FOUR ARRIVAL (RNAV)

CHARLOTTE, NORTH CAROLINA

SE-2, 14 MAY 2026 to 11 JUN 2026

CHARLOTTE APP CON  
126.15 282.325  
D-ATIS ARR  
121.115

RNAV 1 - DME/DME/IRU or GPS.  
RADAR required.

NOTE: Jet aircraft only.  
NOTE: CLT approach will assign landing runway.

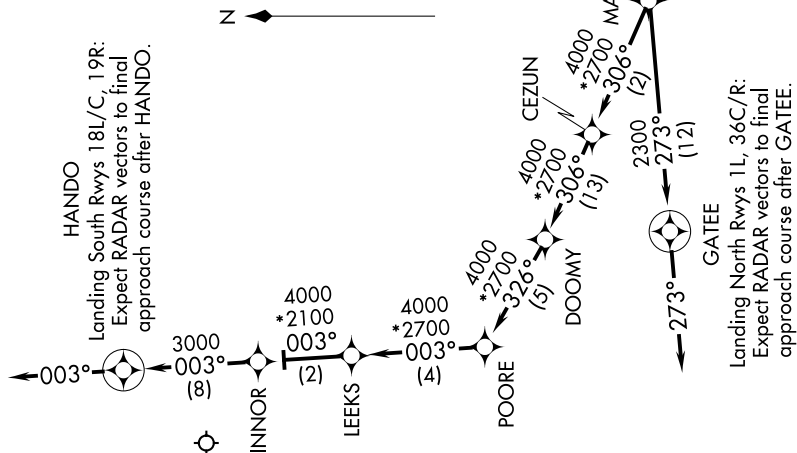
## ARRIVAL ROUTE DESCRIPTION

### OKNEE TRANSITION (OKNEE.MLLET4) TORQD TRANSITION (TORQD.MLLET4)

From RYFILE on track 308° to YELLS, then on track 308° to MILLET, then on track 306° to MANGY.

**LANDING RUNWAYS 1L, 36C/R:** From MANGY on track 273° to GATEE, then on track 273°. Expect RADAR vectors to final approach course.

**LANDING RUNWAYS 18L/C, 19R:** From MANGY on track 306° to CEZUN, then on track 306° to DOOMY, then on track 326° to POORE, then on track 003° to LEEKS, then on track 003° to INNOR, then on track 003° to HANDO, then on track 003°. Expect RADAR vectors to final approach course.



NOTE: Chart not to scale.

# MILLET FOUR ARRIVAL (RNAV)

(RYFLE.MLLET4) 14MAY26

CHARLOTTE, NORTH CAROLINA

CHARLOTTE/DOUGLAS INTL (CLT)

SE-2, 14 MAY 2026 to 11 JUN 2026