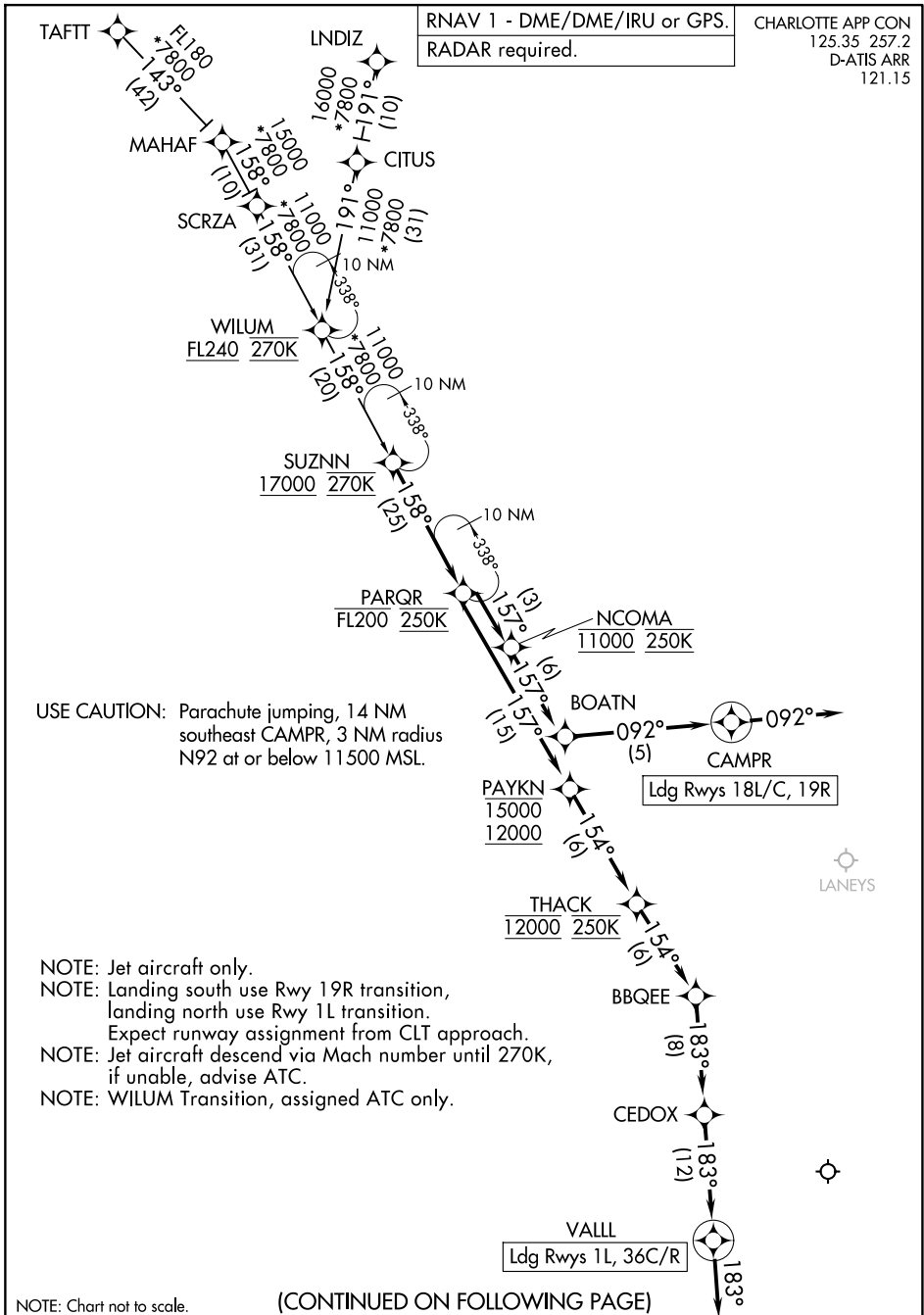


# PARQR FIVE ARRIVAL (RNAV)



SE-2, 14 MAY 2026 to 11 JUN 2026

SE-2, 14 MAY 2026 to 11 JUN 2026

NOTE: Chart not to scale.

(CONTINUED ON FOLLOWING PAGE)

# PARQR FIVE ARRIVAL (RNAV)

**PARQR FIVE ARRIVAL (RNAV)**

ARRIVAL ROUTE DESCRIPTION

LNDIZ TRANSITION (LNDIZ.PARQR5)

TAFTT TRANSITION (TAFTT.PARQR5)

WILUM TRANSITION (WILUM.PARQR5)

From SUZNN on track 158° to cross PARQR at or below FL200 and at 250K.

LANDING RUNWAYS 1L, 36C/R: From PARQR on track 157° to cross PAYKN between 12000 and 15000, then on track 154° to cross THACK at 12000 and at 250K, then on track 154° to BBQEE, then on track 183° to CEDOX, then on track 183° to VALL, then on track 183°. Expect RADAR vectors to final approach course.

LANDING RUNWAYS 18L/C, 19R: From PARQR on track 157° to cross NCOMA at 11000 and at 250K, then on track 157° to BOATN, then on track 092° to CAMPR, then on track 092°. Expect RADAR vectors to final approach course.

SE-2, 14 MAY 2026 to 11 JUN 2026

SE-2, 14 MAY 2026 to 11 JUN 2026