

WAAS CH 56515 W01A	APP CRS 003°	Rwy Ldg TDZE Apt Elev	9000 744 748
--	------------------------	-----------------------------	---

RNAV (GPS) Y RWY 1L

CHARLOTTE/DOUGLAS INTL (CLT)

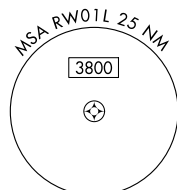
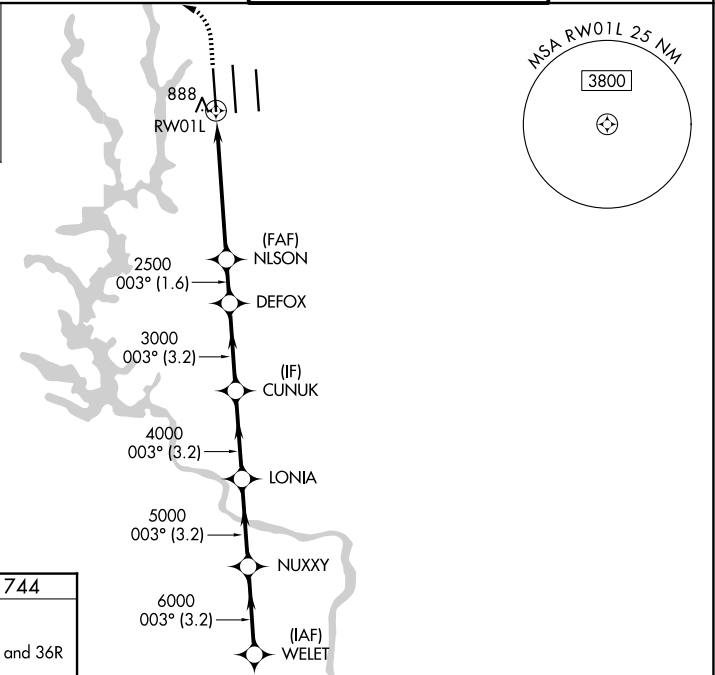
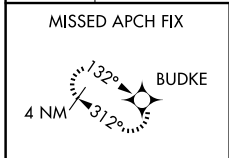
RNP APCH - GPS.

Simultaneous approach authorized. LNAV procedure NA during simultaneous operations.
 Use of FD or AP required during simultaneous operations. Circling NA at night.
 For uncompensated Baro-VNAV systems, LNAV/VNAV NA below -7°C or above 54°C.
 For inop ALS, increase LNAV/VNAV all Cats visibility to RVR 4500.

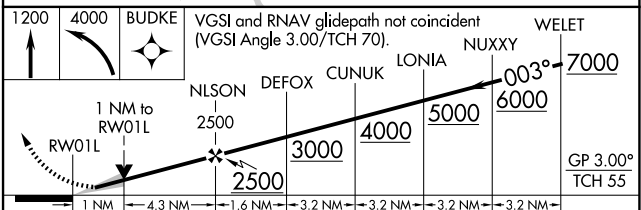
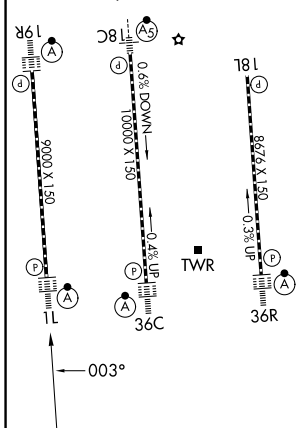
ALS-F-2

MISSED APPROACH: Climb to 1200 then climbing left turn to 4000 direct BUDKE and hold.

D-ATIS	CHARLOTTE APP CON		CHARLOTTE TOWER		GND CON
121.15	128.325 (001°-119°) 120.05 (120°-295°) 134.75 (296°-360°)	257.2 (180°-359°) 307.8 (360°-179°)	118.1 (18L-36R) 126.4 (18C-36C) 133.35 (1L-19R)	257.8 (18L-36R) 257.8 (18C-36C) 257.8 (1L-19R)	121.8 348.6 (W) 121.9 348.6 (E)



ELEV 748	D	TDZE 744
HIRL all Rwys REIL Rwy 18L TDZL/RCLS Rwys 1L, 19R, 36C and 36R		



CATEGORY	A	B	C	D
LPV DA	944/18		200 (200-½)	
LNAV/VNAV DA	1049/24		305 (400-½)	
LNAV MDA	1140/24	396 (400-½)	1140/35	396 (400-¾)
CIRCLING	1380-1	632 (700-1)	1380-2¼ 632 (700-2¼)	1500-2½ 752 (800-2½)

SE-2, 14 MAY 2026 to 11 JUN 2026

SE-2, 14 MAY 2026 to 11 JUN 2026