

WAAS CH 86200 W36B	APP CRS 003°	Rwy Ldg 10000 TDZE 707 Apt Elev 748
--	------------------------	--

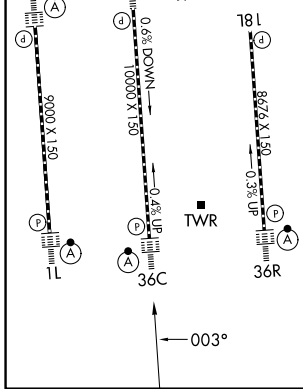
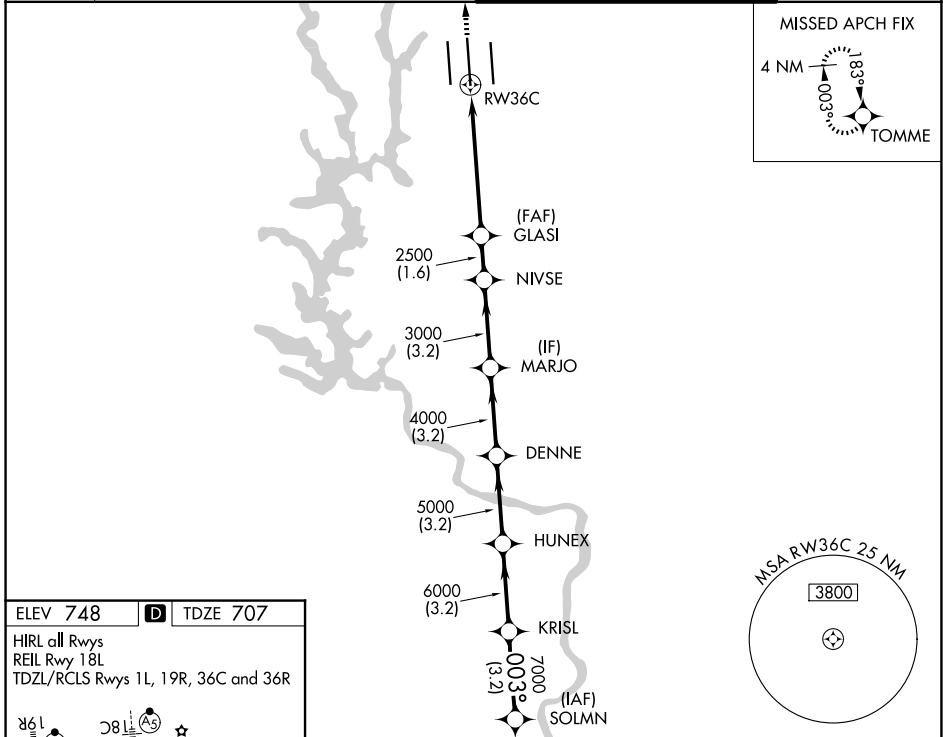
RNAV (GPS) Y RWY 36C

CHARLOTTE/DOUGLAS INTL (CLT)

RNP APCH.
⚠ Circling NA at night. Simultaneous approach authorized. Use of FD or AP required during simultaneous operations. For uncompensated Baro-VNAV systems, LNAV/VNAV NA below -11°C or above 54°C. LNAV procedure NA during simultaneous operations.

ALSIF-2 	MISSED APPROACH: Climb to 3000 direct TOMME and hold.
-------------	--

D-ATIS 121.15	CHARLOTTE APP CON 128.325 (001°-119°) 120.05 (120°-295°) 134.75 (296°-360°)	CHARLOTTE TOWER 118.1 257.8 (18L-36R) 126.4 257.8 (18C-36C) 133.35 257.8 (1L-19R)	GND CON 121.8 348.6 (W) 121.9 348.6 (E)
-------------------------	---	---	---



3000 TOMME	VGSi and RNAV glidepath not coincident (VGSi Angle 3.00/TCH 72).				8000 SOLMN	
	GLASI 2500	NIVSE 3000	MARJO 4000	DENNE 5000	KRISL 6000	7000 SOLMN
*LNAV only.	*1.7 NM to RWY 36C					
	1.7	3.7 NM	1.6 NM	3.2 NM	3.2 NM	3.2 NM
CATEGORY	A		B		C	
LPV DA	907/18		200 (200-1/2)			
LNAV/VNAV DA	1229-1 3/8		522 (500-1 3/8)			
LNAV MDA	1320/40	613 (600-3/4)	1320-1 3/8	613 (600-1 3/8)		
CIRCLING	1380-1	632 (700-1)	1500-2 1/4	752 (800-2 1/4)	1500-2 1/2	752 (800-2 1/2)

SE-2, 14 MAY 2026 to 11 JUN 2026

SE-2, 14 MAY 2026 to 11 JUN 2026