

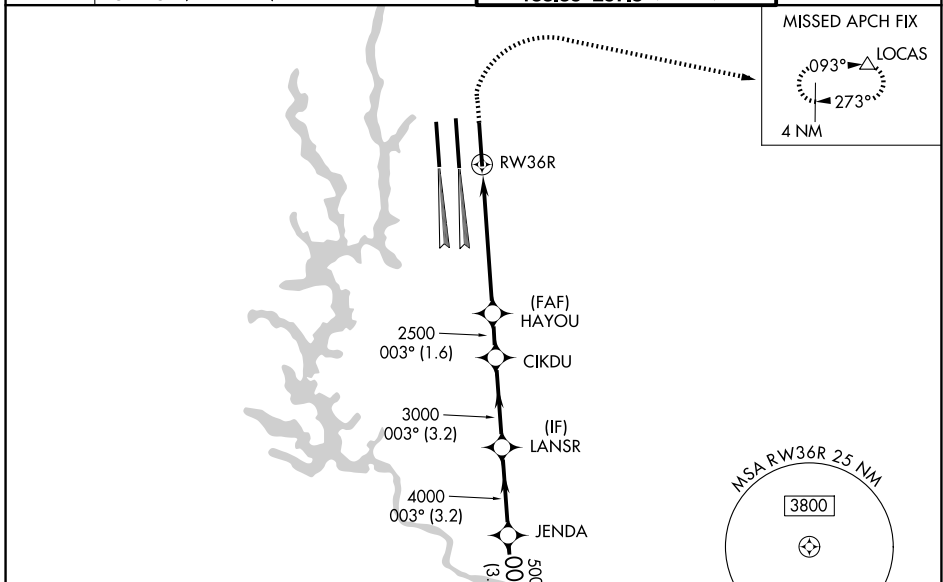
WAAS CH 90100 W36D	APP CRS 003°	Rwy Ldg TDZE 727 Apt Elev 748
--	------------------------	---

RNAV (GPS) Y RWY 36R

CHARLOTTE/DOUGLAS INTL (CLT)

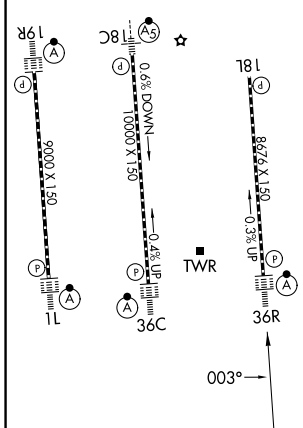
RNP APCH.	<p>▽ Circling NA at night. For uncompensated Baro-VNAV systems, LNAV/VNAV NA below -11°C or above 54°C. Simultaneous approach authorized. Use of FD or AP required during simultaneous operations. LNAV procedure NA during simultaneous operations. For inop ALSF, increase LNAV/VNAV all Cats visibility to 1/2 mile.</p>	<p>ALSF-2</p>	<p>MISSED APPROACH: Climb to 1320 then climbing right turn to 4000 direct LOCAS and hold.</p>
-----------	--	---------------	---

D-ATIS 121.15	CHARLOTTE APP CON 128.325 (001°-119°) 120.05 (120°-295°) 134.75 (296°-360°)	257.2 (180°-359°) 307.8 (360°-179°)	CHARLOTTE TOWER 118.1 257.8 (18L-36R) 126.4 257.8 (18C-36C) 133.35 257.8 (1L-19R)	GND CON 121.8 348.6 (W) 121.9 348.6 (E)
-------------------------	---	--	---	---



ELEV 748	D	TDZE 727
-----------------	----------	-----------------

HIRL all Rwys
REIL Rwy 18L
TDZL/RCLS Rwys 1L, 19R, 36C and 36R



1320	4000	LOCAS	VGSi and RNAV glidepath not coincident (VGSi Angle 3.00/TCH 74).		HEKAM
*LNAV only.				JENDA	HEKAM
CATEGORY	A	B	C	D	
LPV DA	927/18		200 (200-1/2)		
LNAV/VNAV DA	1229-1 1/4		502 (500-1 1/4)		
LNAV MDA	1320/24	593 (600-1/2)	1320-1 1/4	593 (600-1 1/4)	
CIRCLING	1380-1	632 (700-1)	1500-2 1/4 752 (800-2 1/4)	1500-2 1/2 752 (800-2 1/2)	

SE-2, 14 MAY 2026 to 11 JUN 2026

SE-2, 14 MAY 2026 to 11 JUN 2026