

WAAS CH <b>65605</b> <b>W02A</b>	APP CRS <b>022°</b>	Rwy Ldg TDZE Apt Elev	<b>7100</b> <b>683</b> <b>683</b>
--	------------------------	-----------------------------	---

# RNAV (GPS) RWY 2

LOVELL FLD (CHA)

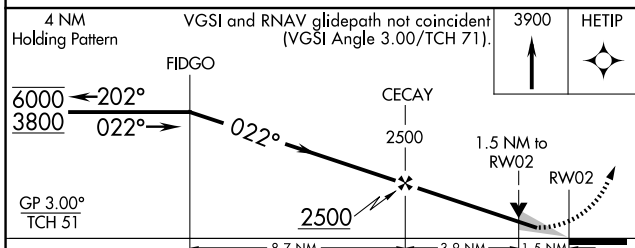
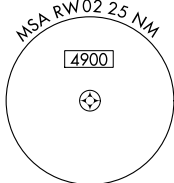
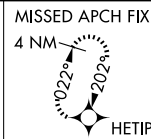
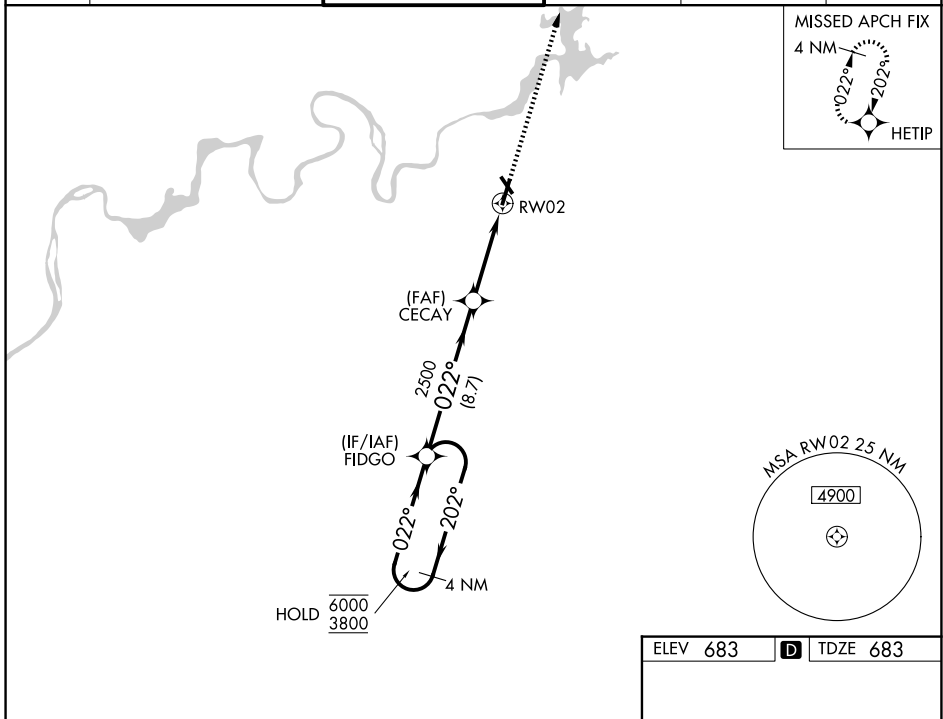
RNP APCH - GPS.

**⚠** Circling Rwy 15, 33 NA at night. For uncompensated Baro-VNAV systems, LNAV/VNAV NA below -16°C or above 54°C. For inop ALS, increase LNAV/VNAV all Cats visibility to 1½ SM. \*\*RVR 1800 authorized with use of FD or AP or HUD to DA.

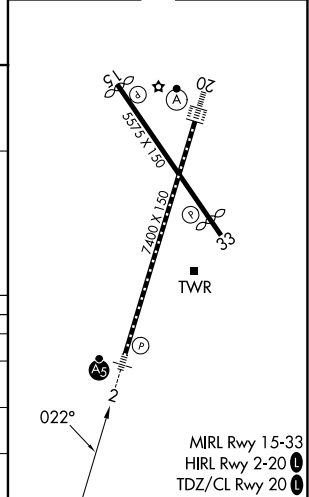


MISSED APPROACH:  
Climb to 3900 direct  
HETIP and hold, continue  
climb-in-hold to 3900.

ATIS <b>119.85</b>	CHATTANOOGA APP CON * <b>125.1 379.1</b>	CHATTANOOGA TOWER * <b>118.3 (CTAF) 257.8</b>	GND CON <b>121.7 348.6</b>	CLNC DEL <b>120.95 348.6</b>	UNICOM <b>122.95</b>
-----------------------	---	--	-------------------------------	---------------------------------	-------------------------



ELEV 683	<b>D</b> TDZE 683
----------	-------------------



CATEGORY	A	B	C	D
LPV DA**		883/24	200 (200-½)	
LNAV/VNAV DA		1197/55	514 (600-1)	
LNAV MDA	1240/24	557 (600-½)	1240/60	557 (600-1¼)
CIRCLING	1300-1 617 (700-1)	1340-1 657 (700-1)	1500-2½ 817 (900-2½)	1580-3 897 (900-3)

MIRL Rwy 15-33  
HIRL Rwy 2-20  
TDZ/CL Rwy 20

SE-1, 14 MAY 2026 to 11 JUN 2026

SE-1, 14 MAY 2026 to 11 JUN 2026