

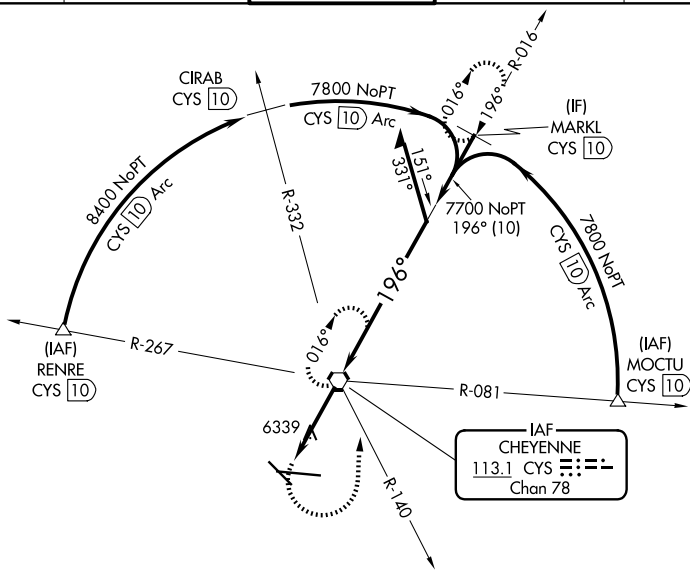
VORTAC CYS <b>113.1</b> Chan <b>78</b>	APP CRS <b>196°</b>	Rwy Ldg TDZE Apt Elev <b>N/A</b> <b>6160</b>
--	------------------------	---

# VOR or TACAN-A

CHEYENNE RGNL/JERRY OLSON FLD (CYS)

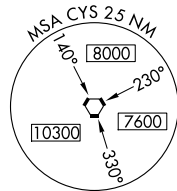
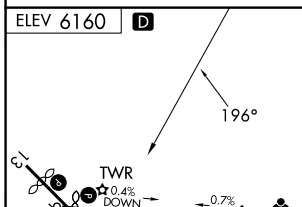
**▲** MISSED APPROACH: Climbing left turn to 8000 on heading 350° and on CYS VORTAC R-140 to CYS VORTAC and hold, continue climb-in-hold to 8000 (TACAN aircraft continue on CYS VORTAC R-016 to MARKL/10 DME and hold north, right turn, 196° inbound.)

ATIS <b>134.425 278.3</b>	CHEYENNE APP CON * <b>124.55 263.075</b>	CHEYENNE TOWER * <b>118.7 (CTAF) 0 257.8</b>	GND CON <b>121.9 254.275</b>	UNICOM <b>122.95</b>
------------------------------	---	---	---------------------------------	-------------------------



NW-1, 14 MAY 2026 to 11 JUN 2026

NW-1, 14 MAY 2026 to 11 JUN 2026



8000 hdg 350° CYS R-140 CYS VORTAC Remain within 10 NM CYS 3.3 7700 3.3 NM	CYS	CYS			
FAF to MAP 3.3 NM	CATEGORY	A	B	C	D
Knots: 60, 90, 120, 150, 180 Min:Sec: 3:18, 2:12, 1:39, 1:19, 1:06	CIRCLING	6640-1	480 (500-1)	6900-2 740 (800-2)	6940-2½ 780 (800-2½)