

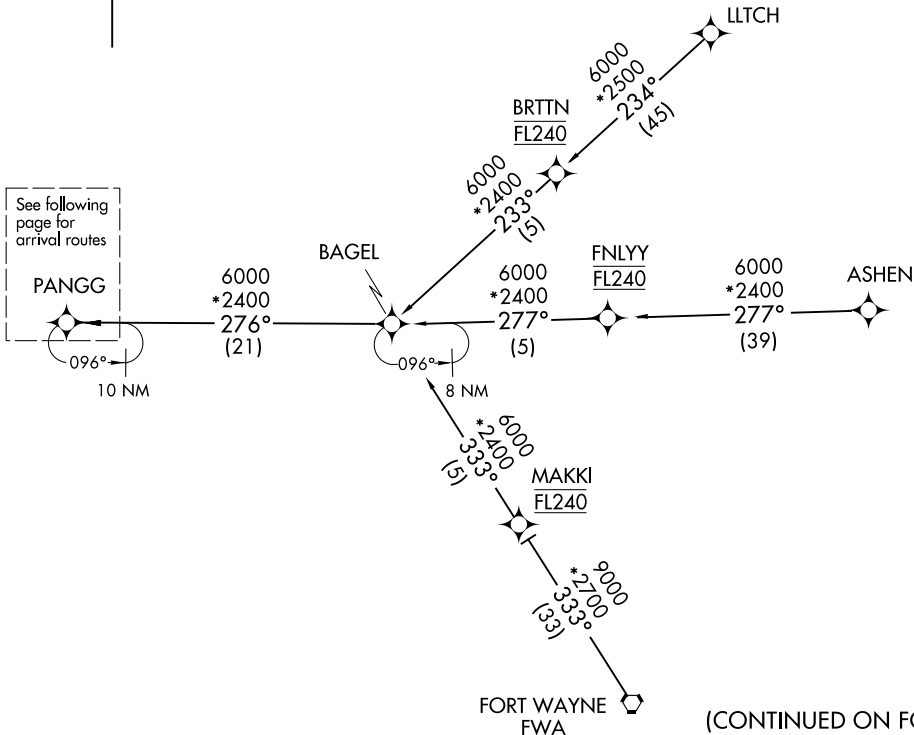
PANGG SEVEN ARRIVAL (RNAV)  
(PANGG.PANGG7) 02OCT25

CHICAGO APP CON  
128.2 353.875  
GYD D-ATIS  
134.575  
MDW D-ATIS  
132.75



RNAV 1-DME/DME/IRU or GPS.  
RADAR required.

ASHEN TRANSITION (ASHEN.PANGG7)  
BAGEL TRANSITION (BAGEL.PANGG7)  
FORT WAYNE TRANSITION (FWA.PANGG7)  
LLTCH TRANSITION (LLTCH.PANGG7)



See following page for arrival routes

NOTE: Chart not to scale.

(CONTINUED ON FOLLOWING PAGE)

CHICAGO, ILLINOIS

CHICAGO, ILLINOIS

A1-81 (FAA)

(PANGG.PANGG7) 26022  
PANGG SEVEN ARRIVAL (RNAV)

PANGG SEVEN ARRIVAL (RNAV)  
(PANGG:PANGG7) 020CT25

CHICAGO APP CON  
128.2 353.875  
GYD D-ATIS  
134.575  
MDW D-ATIS  
132.75

RNAV 1-DME/DME/IRU or GPS.  
RADAR required.

ARRIVAL ROUTE DESCRIPTION

From PANGG on track 274° to cross MEGGZ at 11000, then on track 274° to cross AWSUM at 10000, then on track 273° to IROCK, then on track 273° to cross HALIE at 6000.

LANDING RUNWAY 4R: From HALIE on track 278° to cross OLCYK at or above 4000, then on track 278°. Expect RADAR vectors to final approach course.

LANDING RUNWAY 13L: From HALIE on track 279° to cross TINLY at or above 4000, then on track 279°. Expect RADAR vectors to final approach course.

LANDING RUNWAY 22L: From HALIE on track 343° to cross GERMN at or above 4000, then on track 343° to LNANE, then on track 339° to BOCAH, then on track 274° to cross TACTT at 3000. Expect RNAV Rwy 22L approach or RADAR vectors to final approach course.

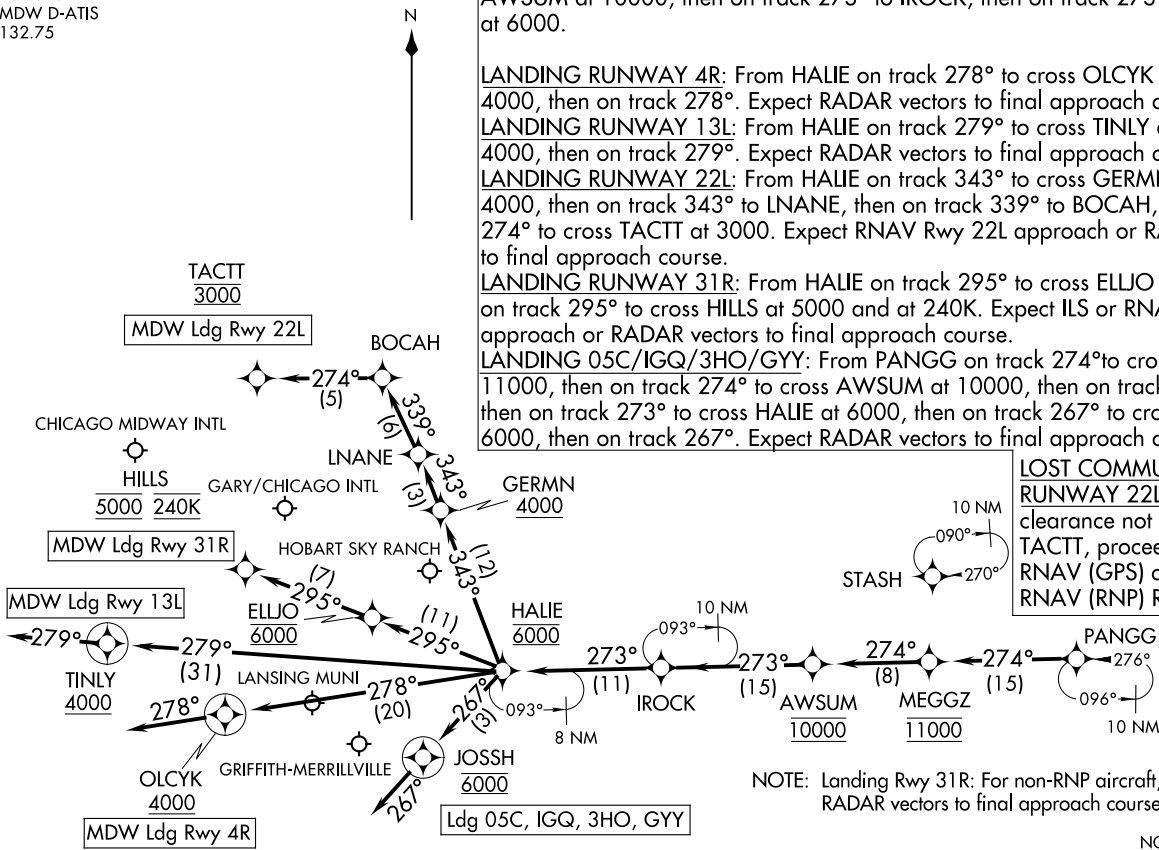
LANDING RUNWAY 31R: From HALIE on track 295° to cross ELLJO at 6000, then on track 295° to cross HILLS at 5000 and at 240K. Expect ILS or RNAV Rwy 31R approach or RADAR vectors to final approach course.

LANDING 05C/IGQ/3HO/GYY: From PANGG on track 274° to cross MEGGZ at 11000, then on track 274° to cross AWSUM at 10000, then on track 273° to IROCK, then on track 273° to cross HALIE at 6000, then on track 267° to cross JOSSH at 6000, then on track 267°. Expect RADAR vectors to final approach course.

LOST COMMUNICATIONS:  
RUNWAY 22L: If approach clearance not received by TACTT, proceed inbound on RNAV (GPS) or RNAV (RNP) RWY 22L routing.

NOTE: Landing Rwy 31R: For non-RNP aircraft, expect RADAR vectors to final approach course.

NOTE: Chart not to scale.



(PANGG:PANGG7) 26022  
PANGG SEVEN ARRIVAL (RNAV)

A-181 (FAA)

CHICAGO, ILLINOIS

CHICAGO, ILLINOIS