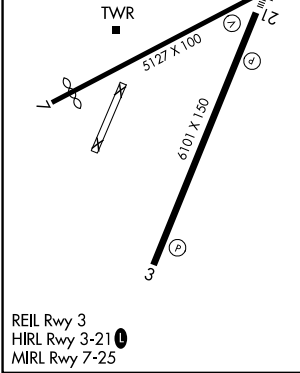
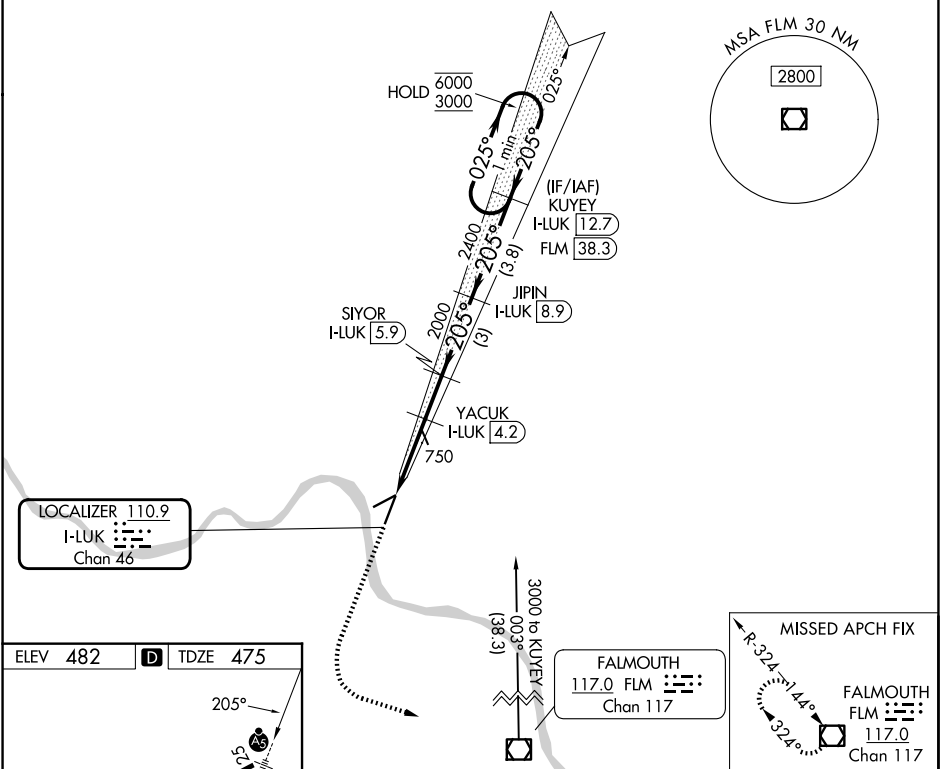


LOC/DME I-LUK	APP CRS	Rwy Ldg	6101
110.9	205°	TDZE	475
Chan 46		Apt Elev	482

ILS or LOC RWY 21

CINCINNATI MUNI/LUNKEN FLD (LUK)

DME required.		MALSR	MISSED APPROACH: Climb to 2000 then climbing left turn to 3000 direct FLM VOR/DME and hold.		
<p>▼ Rwy 21 helicopter visibility reduction below RVR 4000 NA. Circling Rwy 7 NA at night. Circling NA for Cat D north of Rwy 7-25. Inop table does not apply to S-ILS 21 all Cats and S-LOC 21 Cats A and B.</p>	<p>ATIS 123.6</p>	<p>CINCINNATI APP CON 121.0 254.25</p>	<p>LUNKEN TOWER ★ 118.7 (CTAF) 257.8</p>	<p>GND CON 121.9</p>	<p>UNICOM 122.95</p>



ELEV 482	D	TDZE 475		
TWR	21	205°	2000	3000
5127 x 100	52	205°	FLM	FLM
6101 x 150	3	205°	3000 to KUYEY (38.3)	3000
			YACUK I-LUK (4.2)	JIPIN I-LUK (8.9)
			SIYOR I-LUK (5.9)	KUYEY I-LUK (12.7)
			2000	2400
			1460	2000
			1.7 NM	1.3 NM
			1.7 NM	3 NM
			3.8 NM	3.8 NM
			GS 3.00°	TCH 39
			One Minute Holding Pattern	
			MISSED APCH FIX	
			R-324 144°	
			FALMOUTH FLM 117.0 Chan 117	
			324°	
			MISSED APPROACH FIX	
			R-324 144°	
			FALMOUTH FLM 117.0 Chan 117	
			324°	
			MISSED APPROACH FIX	
			R-324 144°	
			FALMOUTH FLM 117.0 Chan 117	
			324°	
			MISSED APPROACH FIX	
			R-324 144°	
			FALMOUTH FLM 117.0 Chan 117	
			324°	
			MISSED APPROACH FIX	
			R-324 144°	
			FALMOUTH FLM 117.0 Chan 117	
			324°	
			MISSED APPROACH FIX	
			R-324 144°	
			FALMOUTH FLM 117.0 Chan 117	
			324°	
			MISSED APPROACH FIX	
			R-324 144°	
			FALMOUTH FLM 117.0 Chan 117	
			324°	
			MISSED APPROACH FIX	
			R-324 144°	
			FALMOUTH FLM 117.0 Chan 117	
			324°	
			MISSED APPROACH FIX	
			R-324 144°	
			FALMOUTH FLM 117.0 Chan 117	
			324°	
			MISSED APPROACH FIX	
			R-324 144°	
			FALMOUTH FLM 117.0 Chan 117	
			324°	
			MISSED APPROACH FIX	
			R-324 144°	
			FALMOUTH FLM 117.0 Chan 117	
			324°	
			MISSED APPROACH FIX	
			R-324 144°	
			FALMOUTH FLM 117.0 Chan 117	
			324°	
			MISSED APPROACH FIX	
			R-324 144°	
			FALMOUTH FLM 117.0 Chan 117	
			324°	
			MISSED APPROACH FIX	
			R-324 144°	
			FALMOUTH FLM 117.0 Chan 117	
			324°	
			MISSED APPROACH FIX	
			R-324 144°	
			FALMOUTH FLM 117.0 Chan 117	
			324°	
			MISSED APPROACH FIX	
			R-324 144°	
			FALMOUTH FLM 117.0 Chan 117	
			324°	
			MISSED APPROACH FIX	
			R-324 144°	
			FALMOUTH FLM 117.0 Chan 117	
			324°	
			MISSED APPROACH FIX	
			R-324 144°	
			FALMOUTH FLM 117.0 Chan 117	
			324°	
			MISSED APPROACH FIX	
			R-324 144°	
			FALMOUTH FLM 117.0 Chan 117	
			324°	
			MISSED APPROACH FIX	
			R-324 144°	
			FALMOUTH FLM 117.0 Chan 117	
			324°	
			MISSED APPROACH FIX	
			R-324 144°	
			FALMOUTH FLM 117.0 Chan 117	
			324°	
			MISSED APPROACH FIX	
			R-324 144°	
			FALMOUTH FLM 117.0 Chan 117	
			324°	
			MISSED APPROACH FIX	
			R-324 144°	
			FALMOUTH FLM 117.0 Chan 117	
			324°	
			MISSED APPROACH FIX	
			R-324 144°	
			FALMOUTH FLM 117.0 Chan 117	
			324°	
			MISSED APPROACH FIX	
			R-324 144°	
			FALMOUTH FLM 117.0 Chan 117	
			324°	
			MISSED APPROACH FIX	
			R-324 144°	
			FALMOUTH FLM 117.0 Chan 117	
			324°	
			MISSED APPROACH FIX	
			R-324 144°	
			FALMOUTH FLM 117.0 Chan 117	
			324°	
			MISSED APPROACH FIX	
			R-324 144°	
			FALMOUTH FLM 117.0 Chan 117	
			324°	
			MISSED APPROACH FIX	
			R-324 144°	
			FALMOUTH FLM 117.0 Chan 117	
			324°	
			MISSED APPROACH FIX	
			R-324 144°	
			FALMOUTH FLM 117.0 Chan 117	
			324°	
			MISSED APPROACH FIX	
			R-324 144°	
			FALMOUTH FLM 117.0 Chan 117	
			324°	
			MISSED APPROACH FIX	
			R-324 144°	
			FALMOUTH FLM 117.0 Chan 117	
			324°	
			MISSED APPROACH FIX	
			R-324 144°	
			FALMOUTH FLM 117.0 Chan 117	
			324°	
			MISSED APPROACH FIX	
			R-324 144°	
			FALMOUTH FLM 117.0 Chan 117	
			324°	
			MISSED APPROACH FIX	
			R-324 144°	
			FALMOUTH FLM 117.0 Chan 117	
			324°	
			MISSED APPROACH FIX	
			R-324 144°	
			FALMOUTH FLM 117.0 Chan 117	
			324°	
			MISSED APPROACH FIX	
			R-324 144°	
			FALMOUTH FLM 117.0 Chan 117	
			324°	
			MISSED APPROACH FIX	
			R-324 144°	
			FALMOUTH FLM 117.0 Chan 117	
			324°	
			MISSED APPROACH FIX	
			R-324 144°	
			FALMOUTH FLM 117.0 Chan 117	
			324°	
			MISSED APPROACH FIX	
			R-324 144°	
			FALMOUTH FLM 117.0 Chan 117	
			324°	
			MISSED APPROACH FIX	
			R-324 144°	
			FALMOUTH FLM 117.0 Chan 117	
			324°	
			MISSED APPROACH FIX	
			R-324 144°	
			FALMOUTH FLM 117.0 Chan 117	
			324°	
			MISSED APPROACH FIX	
			R-324 144°	
			FALMOUTH FLM 117.0 Chan 117	
			324°	
			MISSED APPROACH FIX	
			R-324 144°	
			FALMOUTH FLM 117.0 Chan 117	
			324°	
			MISSED APPROACH FIX	
			R-324 144°	
			FALMOUTH FLM 117.0 Chan 117	
			324°	
			MISSED APPROACH FIX	
			R-324 144°	
			FALMOUTH FLM 117.0 Chan 117	
			324°	
			MISSED APPROACH FIX	
			R-324 144°	
			FALMOUTH FLM 117.0 Chan 117	
			324°	
			MISSED APPROACH FIX	
			R-324 144°	
			FALMOUTH FLM 117.0 Chan 117	
			324°	
			MISSED APPROACH FIX	
			R-324 144°	
			FALMOUTH FLM 117.0 Chan 117	
			324°	
			MISSED APPROACH FIX	
			R-324 144°	
			FALMOUTH FLM 117.0 Chan 117	
			324°	
			MISSED APPROACH FIX	
			R-324 144°	
			FALMOUTH FLM 117.0 Chan 117	
			324°	
			MISSED APPROACH FIX	
			R-324 144°	
			FALMOUTH FLM 117.0 Chan 117	
			324°	
			MISSED APPROACH FIX	
			R-324 144°	
			FALMOUTH FLM 117.0 Chan 117	
			324°	
			MISSED APPROACH FIX	
			R-324 144°	
			FALMOUTH FLM 117.0 Chan 117	
			324°	
			MISSED APPROACH FIX	
			R-324 144°	
			FALMOUTH FLM 117.0 Chan 117	
			324°	
			MISSED APPROACH FIX	
			R-324 144°	
			FALMOUTH FLM 117.0 Chan 117	
			324°	
			MISSED APPROACH FIX	
			R-324 144°	
			FALMOUTH FLM 117.0 Chan 117	
			324°	
			MISSED APPROACH FIX	
			R-324 144°	
			FALMOUTH FLM 117.0 Chan 117	
			324°	
			MISSED APPROACH FIX	
			R-324 144°	
			FALMOUTH FLM 117.0 Chan 117	
			324°	
			MISSED APPROACH FIX	
			R-324 144°	
			FALMOUTH FLM 117.0 Chan 117	
			324°	
			MISSED APPROACH FIX	
			R-324 144°	
			FALMOUTH FLM 117.0 Chan 117	
			324°	
			MISSED APPROACH FIX	
			R-324 144°	
			FALMOUTH FLM 117.0 Chan 117	
			324°	
			MISSED APPROACH FIX	
			R-324 144°	
			FALMOUTH FLM 117.0 Chan 117	
			324°	
			MISSED APPROACH FIX	
			R-324 144°	
			FALMOUTH FLM 117.0 Chan 117	
			324°	
			MISSED APPROACH FIX	
			R-324 144°	
			FALMOUTH FLM 117.0 Chan 117	
			324°	
			MISSED APPROACH FIX	
			R-324 144°	