

WAAS CH <b>86701</b> <b>W25A</b>	APP CRS <b>246°</b>	Rwy Ldg TDZE <b>5127</b> <b>478</b>	Apt Elev <b>482</b>
--	------------------------	---	------------------------

# RNAV (GPS) RWY 25

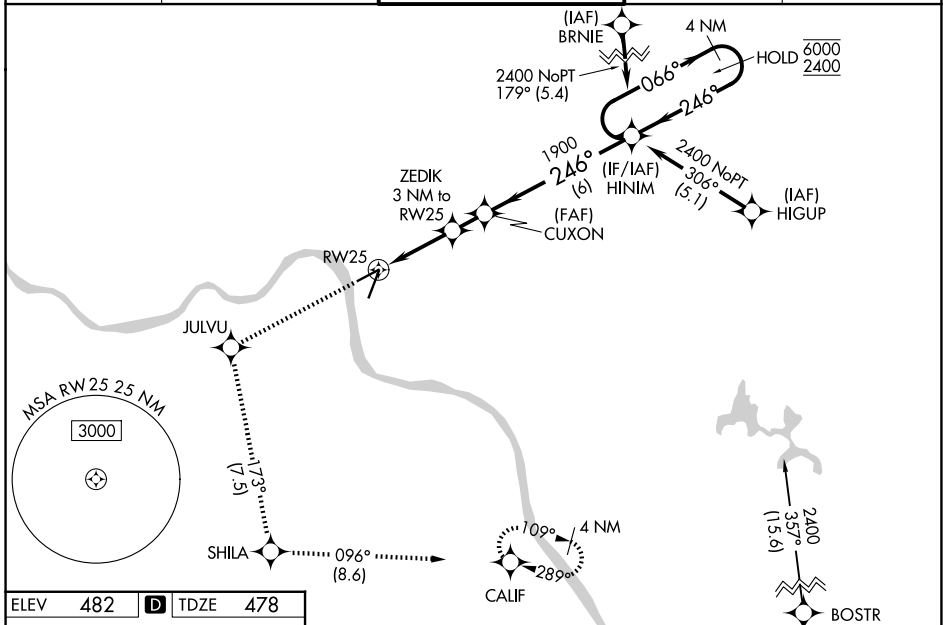
CINCINNATI MUNI/LUNKEN FLD (LUK)

RNP APCH - GPS.

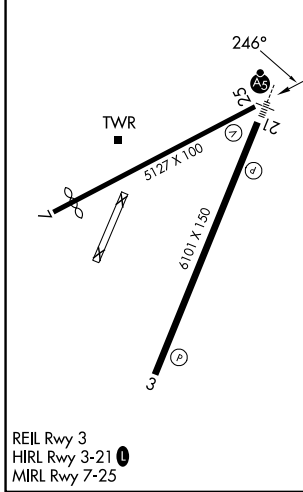
▼ Baro-VNAV and VDP NA when using CVG altimeter setting. Rwy 25 helicopter visibility reduction below  $\frac{3}{4}$  SM NA. For uncompensated Baro-VNAV systems, LNAV/VNAV NA below -15°C or above 54°C. When local altimeter setting not received, use CVG altimeter setting and increase LPV DA to 961 feet, all visibilities  $\frac{1}{8}$  SM; increase LNAV/VNAV DA to 1248 feet; increase all MDAs 100 feet, LNAV Cat B visibility  $\frac{1}{4}$  SM, and LNAV Cat C/D visibility  $\frac{1}{2}$  SM.

MISSED APPROACH: Climb to 2500 direct JULVU and on track 173° to SHILA and on track 096° to CALIF and hold, continue climb-in-hold to 2600.

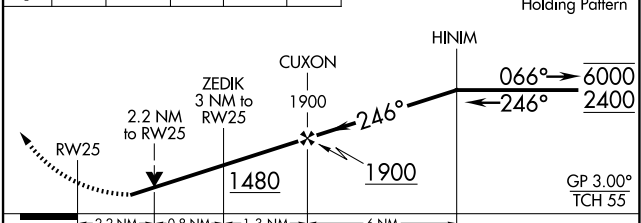
ATIS <b>123.6</b>	CINCINNATI APP CON <b>121.0 254.25</b>	LUNKEN TOWER ★ <b>118.7 (CTAF) 0 257.8</b>	GND CON <b>121.9</b>	UNICOM <b>122.95</b>
----------------------	---	---	-------------------------	-------------------------



ELEV 482	<b>D</b>	TDZE 478
----------	----------	----------



2500	JULVU	SHILA	CALIF	VGSI and RNAV glidepath not coincident (VGSI Angle 3.00/TCH 40).
↑	tr 173°	tr 096°		



CATEGORY	A	B	C	D
LPV DA	875-1¼		397 (400-1¼)	
LNAV/VNAV DA	1162-2½		684 (700-2½)	
LNAV MDA	1160-1	682 (700-1)	1160-2	682 (700-2)

EC-2, 14 MAY 2026 to 11 JUN 2026

EC-2, 14 MAY 2026 to 11 JUN 2026