

RNAV (GPS) RWY 3

CINCINNATI MUNI/LUNKEN FLD (LUK)

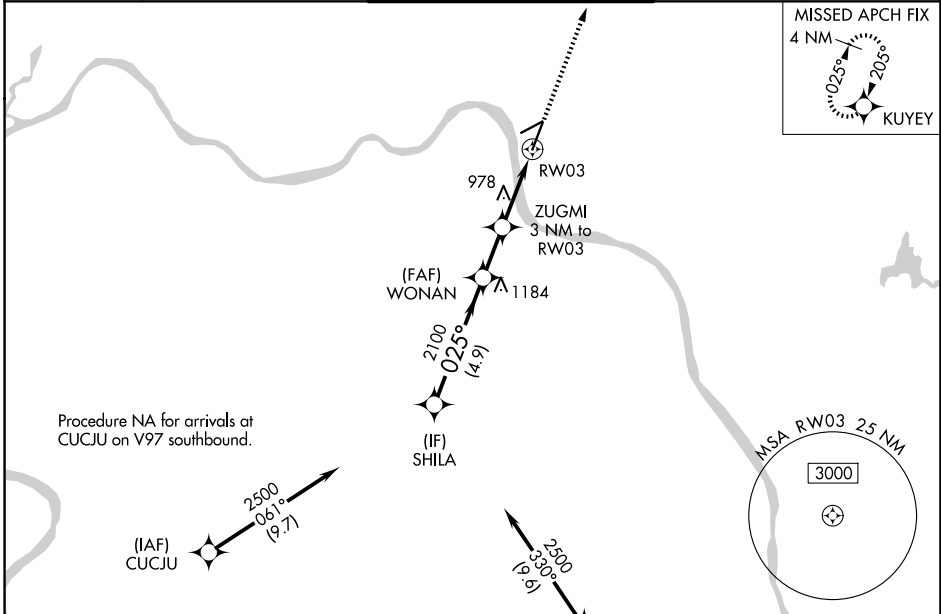
APP CRS 025°	Rwy Ldg TDZE 481	6101
	Apt Elev 482	

RNP APCH-GPS.

▽
▲ Rwy 3 helicopter visibility reduction below 3/4 SM NA.
Circling NA for Cat D north of Rwy 7-25. Circling Rwy 7 NA at night.

MISSED APPROACH: Climb to 2600 direct KUYEY and hold.

ATIS 123.6	CINCINNATI APP CON 121.0 254.25	LUNKEN TOWER ★ 118.7 (CTAF) 257.8	GND CON 121.9	UNICOM 122.95
----------------------	---	---	-------------------------	-------------------------



Procedure NA for arrivals at CUCJU on V97 southbound.

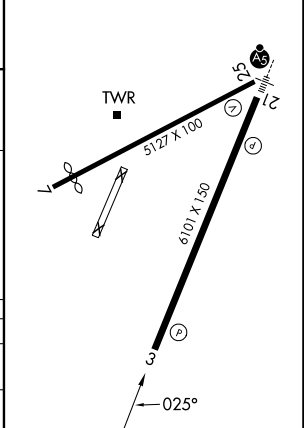
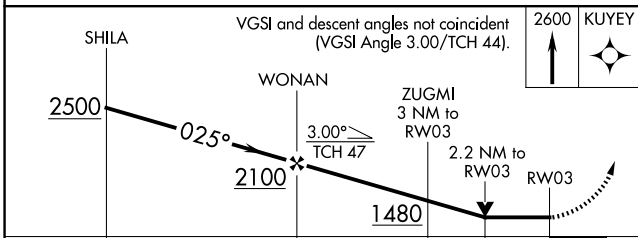
(IAF) CUCJU 2500 061° (9.7)

Procedure NA for arrivals at FLM VOR/DME on V517 southeast bound.

(IAF) LODLL 2700 345° (10)

FALMOUTH FLM

ELEV 482	D TDZE 481
REIL Rwy 3	
HIRL Rwy 3-21	
MIRL Rwy 7-25	



	VGSI and descent angles not coincident (VGSI Angle 3.00/TCH 44).		2600	KUYEY
CATEGORY	A	B	C	D
LNVA MDA	1240-1 759 (800-1)	1240-1 1/4 759 (800-1 1/4)	1240-2	759 (800-2)
CIRCLING	1260-1 778 (800-1)	1360-1 1/4 878 (900-1 1/4)	1360-2 1/2 878 (900-2 1/2)	1400-3 918 (1000-3)

EC-2, 14 MAY 2026 to 11 JUN 2026

EC-2, 14 MAY 2026 to 11 JUN 2026